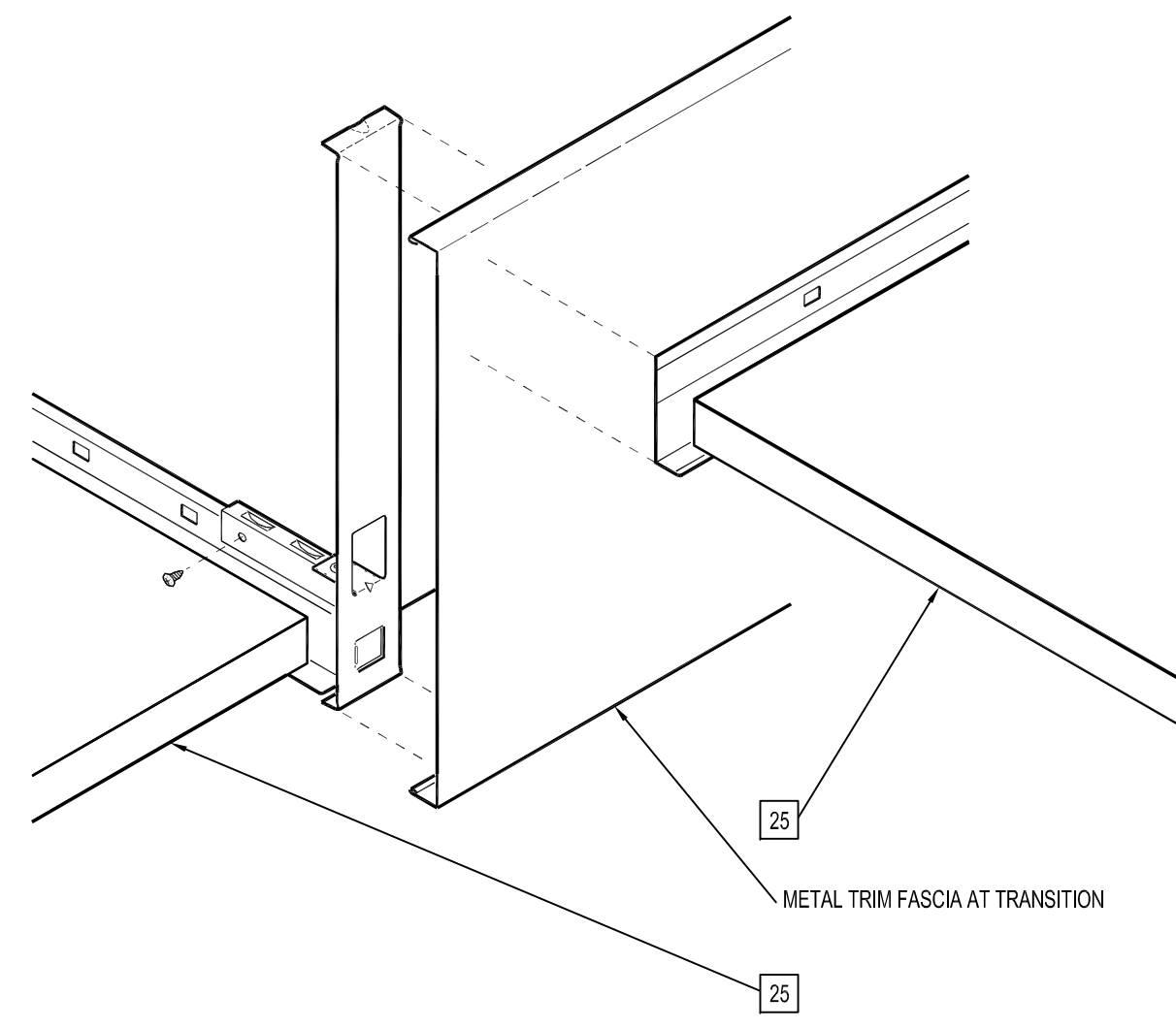


GENERAL NOTES

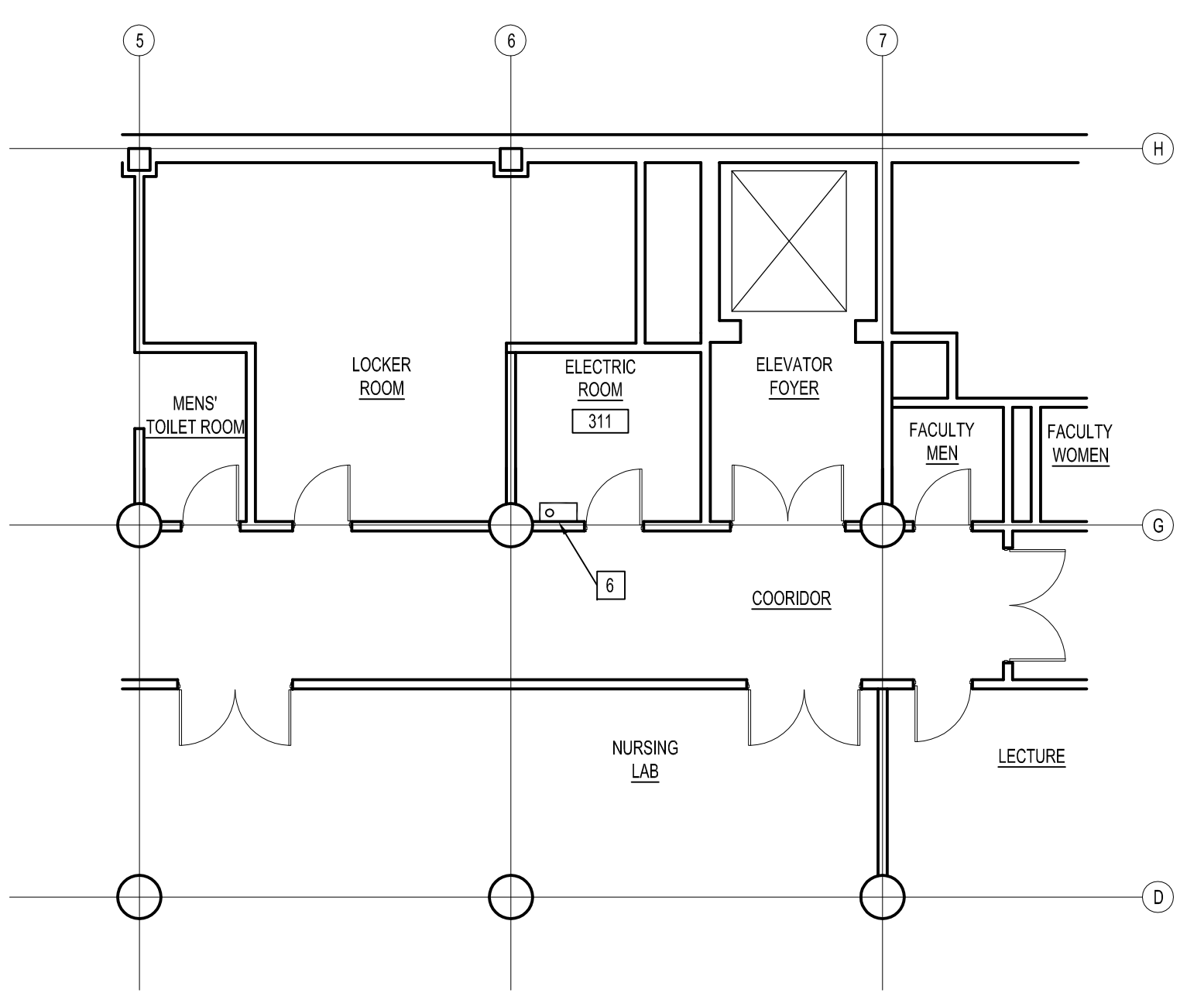
1. ACOUSTIC CEILING TILE & SUSPENSION SYSTEM SHOWN IN REFLECTED CEILING PLAN INDICATES THE EXTENT OF WORK.
2. SEE ELECTRICAL DRAWINGS FOR NEW LIGHTING LAYOUT
3. EXISTING CEILING SYSTEMS NOT SHOWN ARE TO REMAIN.

KEY NOTES

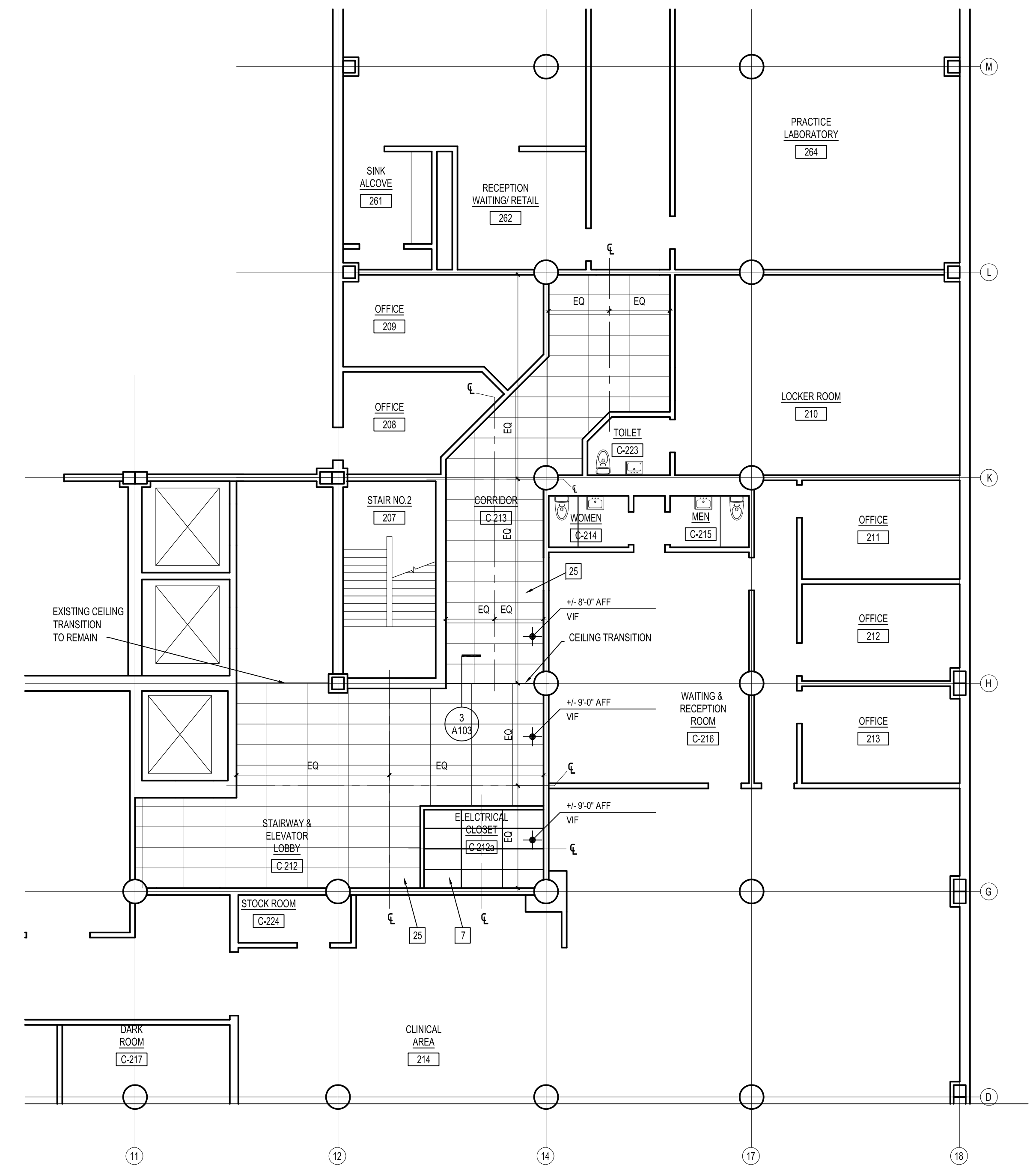
- 6 ELECTRIC ALT 2: CONDUIT TO SUBPANEL ON 3RD FLOOR, ROOM #311
- 7 NEW SUSPENDED CEILING SYSTEM. SEE ARCHITECTURAL SPEC. FOR NEW LIGHTING, SEE ELECTRIC DRAWINGS
- 25 ALT 3: REPLACE EXISTING ACOUSTIC CEILING & LIGHTING AS SHOWN.



3 CEILING TRANSITION DETAIL
3" = 1'-0"



3 3RD FLOOR PARTIAL PLAN
1/8" = 1'-0"



1 2nd Floor Partial Reflected Ceiling Plan
1/8" = 1'-0"