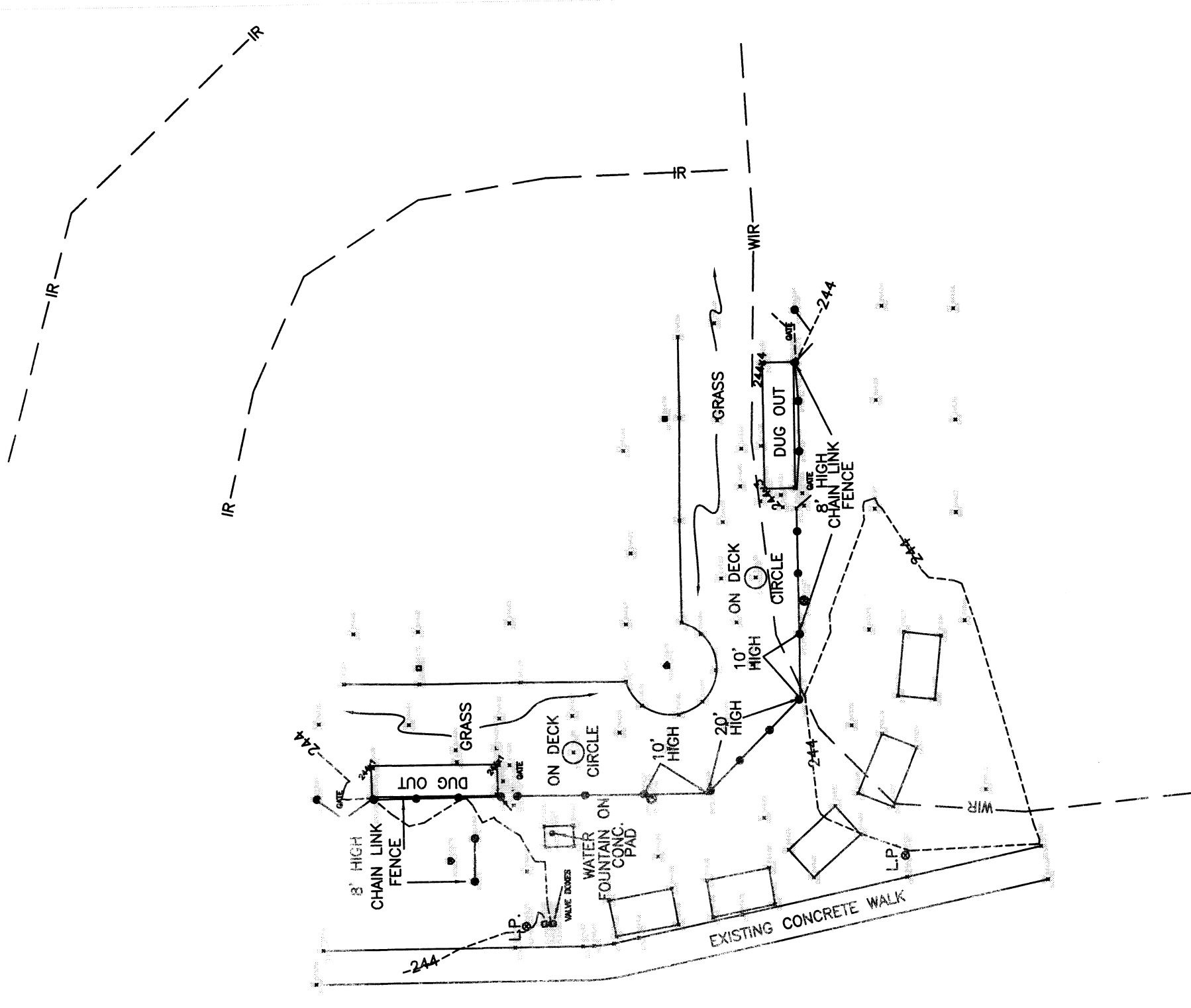


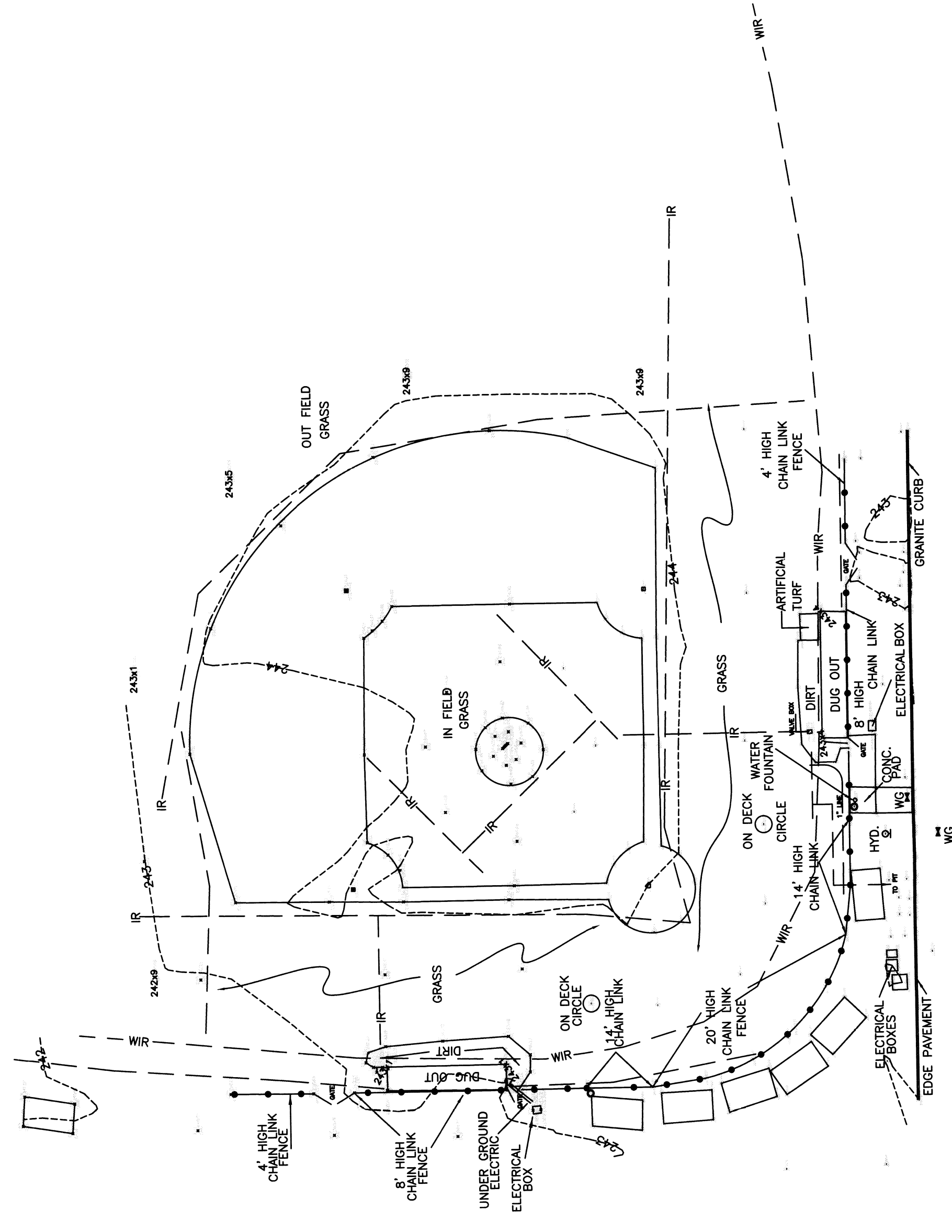
SOFTBALL FIELD



SCALE IN FEET



BASEBALL FIELD



LEGEND

- BLEACHERS
- TRASH CAN
- HYDRANT
- WATER GATE
- LIGHT POST
- SPOT GRADE
- EXISTING CONTOUR
- WIRING FOR IRRIGATION
- IRRIGATION LINE (SEE NOTE)

NOTE: IRRIGATION LINE TAKEN FROM PARALLEL TO IR-244 DATED 6-23-88 REVISION 7-E-88.

NOTE: UNDERGROUND UTILITIES ARE SHOWN FROM AVAILABLE UTILITY INFORMATION ONLY AND WILL REQUIRE ACTUAL FIELD VERIFICATION. MORE UNDERGROUND UTILITIES EXIST THAN ARE SHOWN. DIG SAFE AS WELL AS EACH UTILITY COMPANY SHALL BE NOTIFIED TO MARK THEIR UNDERGROUND LINES AT LEAST 72 HOURS PRIOR TO ANY EXCAVATION. DIG SAFE TEL. 1-888-344-7233

WESTFIELD STATE UNIVERSITY
 PART OF BASEBALL FIELD
 PART OF SOFTBALL FIELD
 EXISTING CONDITIONS
 WESTFIELD, MASSACHUSETTS

FOR:	DATE:	SCALE:	CHECKED:
			C.A.D.
			SHEET NO.

DILB EAM, INC. SURVEYORS &
 40 SCHOOL STREET ENGINEERS
 WESTFIELD, MASSACHUSETTS