

# AMHERST SURVIVAL CENTER

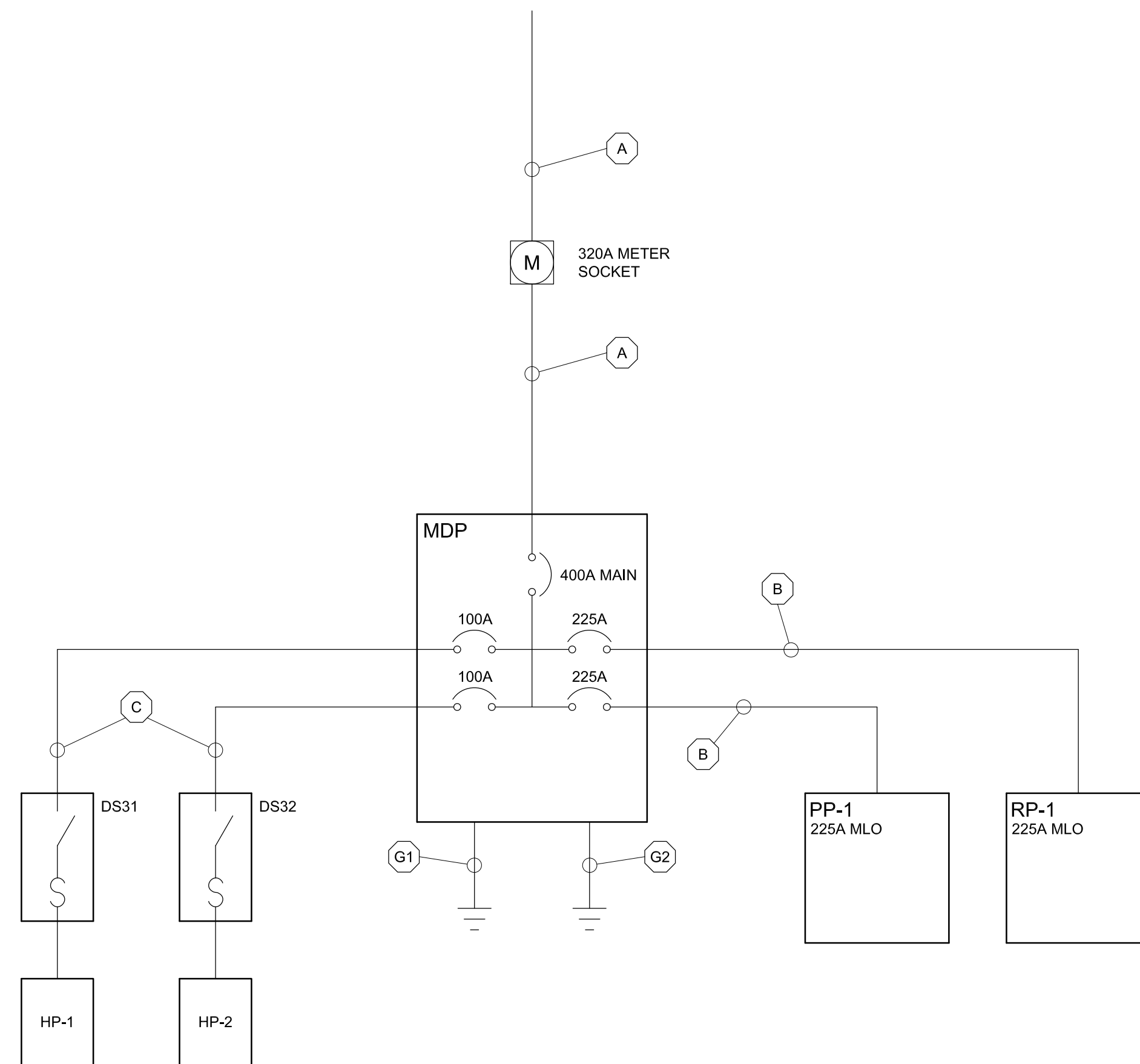
138 Sunderland Road  
Amherst, MA

## Ford Gillen Architects

409 Main Street  
Amherst, MA 01002  
tel 413-253-2529  
fax 413-256-1553  
email: fgaoffice@fordgillen.com

## Electrical Engineer

Hill Engineers, Architects, Planners, Inc.  
50 Depot Street  
Dalton, MA 01226  
tel 413-684-0925  
email: jobrien@hillengineers.com



1-LINE DIAGRAM

### LEGEND

METER SOCKET	320A, 3Ø, 400 AMP METER SOCKET WITH BYPASS. MILBANK U4911-X-BL OR EQUAL. OBTAIN UTILITY COMPANY APPROVAL FOR BOTH STYLE AND LOCATION PRIOR TO INSTALLATION.
MDP	400 AMP 3Ø, 4W 120/208 VOLT 18 SINGLE CIRCUIT DISTRIBUTION PANEL WITH MAIN BREAKER. SHORT CIRCUIT RATING 25 KAIC, SQ D HCN14654M/HCN65TSD/HC2665B OR EQUAL. LABELED SUITABLE AS SERVICE EQUIPMENT.
PP-1 RP-1	225 AMP 3Ø, 4W 120/208 VOLT 42 CIRCUIT MLO PANELBOARD. SQ D Q0342MQ225/Q0C342MQS, OR EQUAL. PROVIDE EQUIPMENT GROUND BAR.

### FEEDER & CONDUCTOR SCHEDULE

A	(4) 500 KCMIL THWN-2 COPPER IN 4" SCHEDULE 40 PVC. PROVIDE RISER CONDUIT PER UTILITY COMPANY REQUIREMENTS. PROVIDE CONDUCTOR LENGTH PER UTILITY COMPANY REQUIREMENTS.
B	(4) 4/0 & #4 AWG THWN-2 COPPER IN 2 1/2" EMT.
C	(3) #1 & (1) #8 AWG THWN-2 COPPER IN 1 1/4" EMT.
G1	1/0 COPPER TO WATER SERVICE ENTRANCE(S).
G2	#4 COPPER TO NEW FOOTING.

SQ D TYPE QO TOP FEED		PP-1	BASEMENT SURFACE MTD		
25 KAIC COPPER BUS		225 AMP MAIN LUGS ONLY	120/208V 3Ø 4W		
1	15	HEAT PUMPS 129, 132, 116, 121, 122, 123, 124, 125, 126, 128	HEAT PUMPS 106, 114, 118, 119, 116, 115, 113, 110, 109, 108, 103, 105	15	2
3					4
5	15	ERV-1	ERV-3	15	6
7					8
9	15	EF-1 KITCHEN HOOD	MUA-1	20	10
11	15	EF-2 JANITORS CLOSETS		20	12
13			CONDENSER #1	30	14
15	20	ERV-2		30	16
17			CONDENSER #2	30	18
19	20	SPARE		20	20
21	20	SPARE	EVAPORATOR #1	20	22
23	20	SPARE		20	24
25	20	SPARE	EVAPORATOR #2	20	26
27	20	SPARE		20	28
29	20	SPARE	DOOR OPERATORS	20	30
31	20	SPARE		20	32
33			BOOSTER HEATER	20	34
35	50	WATER HEATER		20	36
37			WASHER	20	38
39	20	DISHWASHER	DRYER	30	40
41				30	42

SQ D TYPE QO TOP FEED		RP-1	BASEMENT SURFACE MTD		
25 KAIC COPPER BUS		225 AMP MAIN LUGS ONLY	120/208V 3Ø 4W		
1	20	RECPTS 121, 122	RECEPTS 128, 116	20	2
3	20	RECPTS 123, 124	RECEPTS 128	20	4
5	20	RECPTS 125, 126	RECEPTS 129, 130	20	6
7	20	RECPTS 103, 104, 105, 106	RECEPTS 130, 132	20	8
9	20	RECPTS 103, 108, 109, 102, 101, ENTRY	RECEPTS 113	20	10
11	20	RECPTS 110, 111, 112, 113, DELIVERY	RECEPTS 114, 116	20	12
13	20	RECPTS SERVING COUNTER	RECEPTS 115, 120, 116	20	14
15	20	RECPTS SERVING COUNTER	RECEPTS 119	20	16
17	20	RECPTS 116, 120, ATTIC	RECEPTS 116, TV	20	18
19	20	RECPTS REFRIGERTOR	HEATED HOLDING CABINET, KITCHEN	20	20
21	20	RECPTS 118, 119, NORTH EXTERIOR	RECEPTS 116	20	22
23	20	RECPTS BASEMENT	RECEPTS 116	20	24
25	20	RECPTS BASEMENT	LTS 129, 130, 132	20	26
27	20	RECPTS BASEMENT	LTS JAN, 115, 118, 119, 122, 123, 124, 125, 126, 128	20	28
29	20	RECPTS BASEMENT	LTS 103, 105, 106, 107, 108, 109, 110, 111, 112, 113	20	30
31	20	LTS BASEMENT	LTS 102, 114, 116	20	32
33	20	EXTERIOR LIGHTS	RECEPTS 116	20	34
35	20	SPARE	SPARE	20	36
37	20	SPARE	SPARE	20	38
39	20	SPARE	SPARE	20	40
41	20	SPARE	SPARE	20	42

SQ D I LINE HCN OR EQUAL TOP FEED		MDP	BASEMENT SURFACE MTD		
25 KAIC COPPER BUS		400 AMP MAIN BREAKER	120/208V 3Ø 4W		
3	100	HP-1	PP-1	225	4
9	100	HP-2	RP-1	225	10
15		SPACE	SPACE		16
17	20	FIRE ALARM CONTROL PANEL			

A	10/11/11	BID SET
Rev.	Date	DESCRIPTION

Job No.:	FGA NO. 3010
Date:	July 15, 2011
Scale:	NONE
File:	

Title:  
ELECTRICAL PANELS & 1-LINE DIAGRAM

# E2.1

Drawing No.