

DATE	REVISIONS	CHECK
01/14/2011	DPH REVIEW	GS
05/18/2011	DPH REVISIONS	REK
08/04/2011	DPH REVISIONS 2	REK
PROJECT NO. HA1-0-43	DATE	01/14/2011

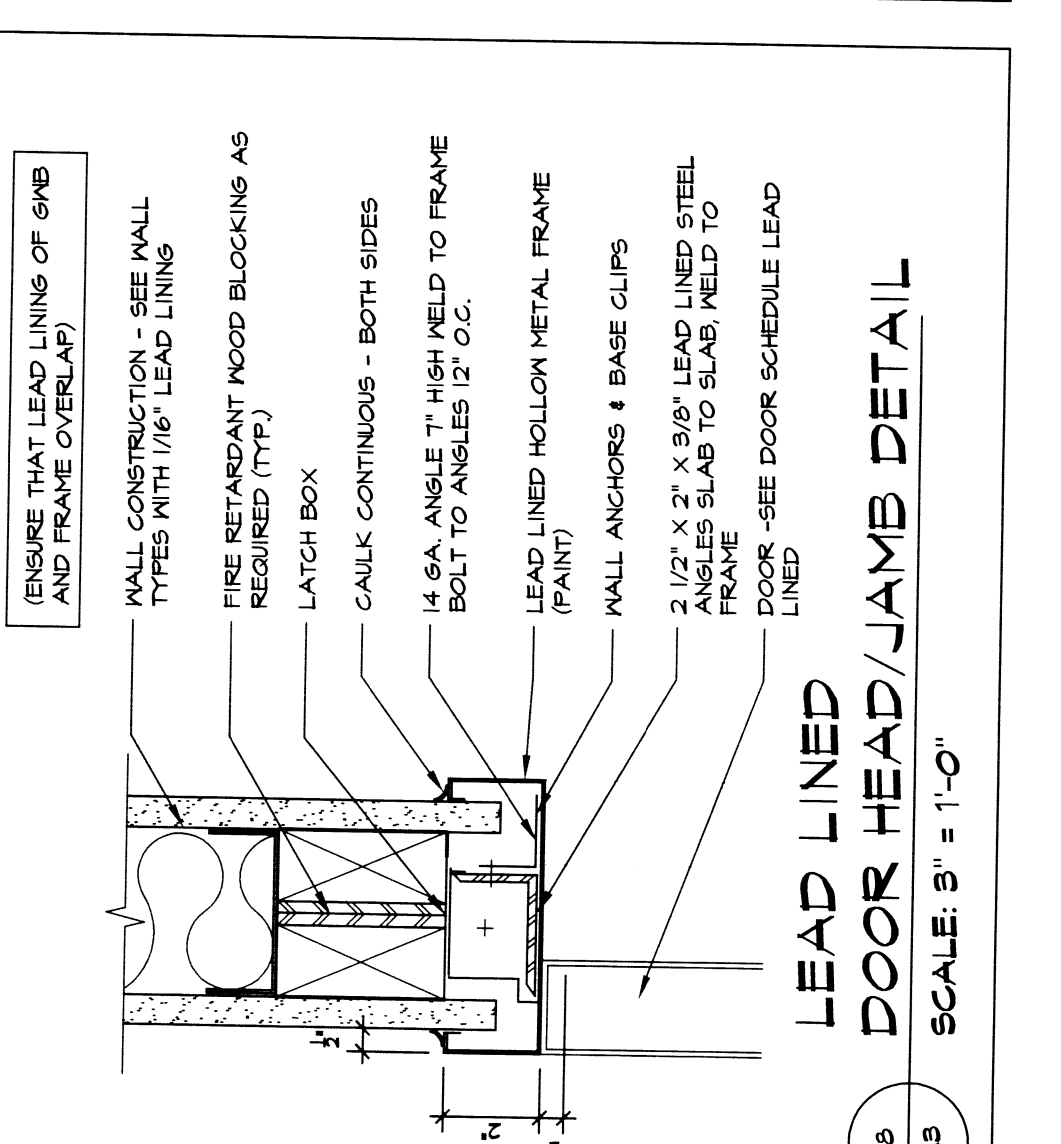
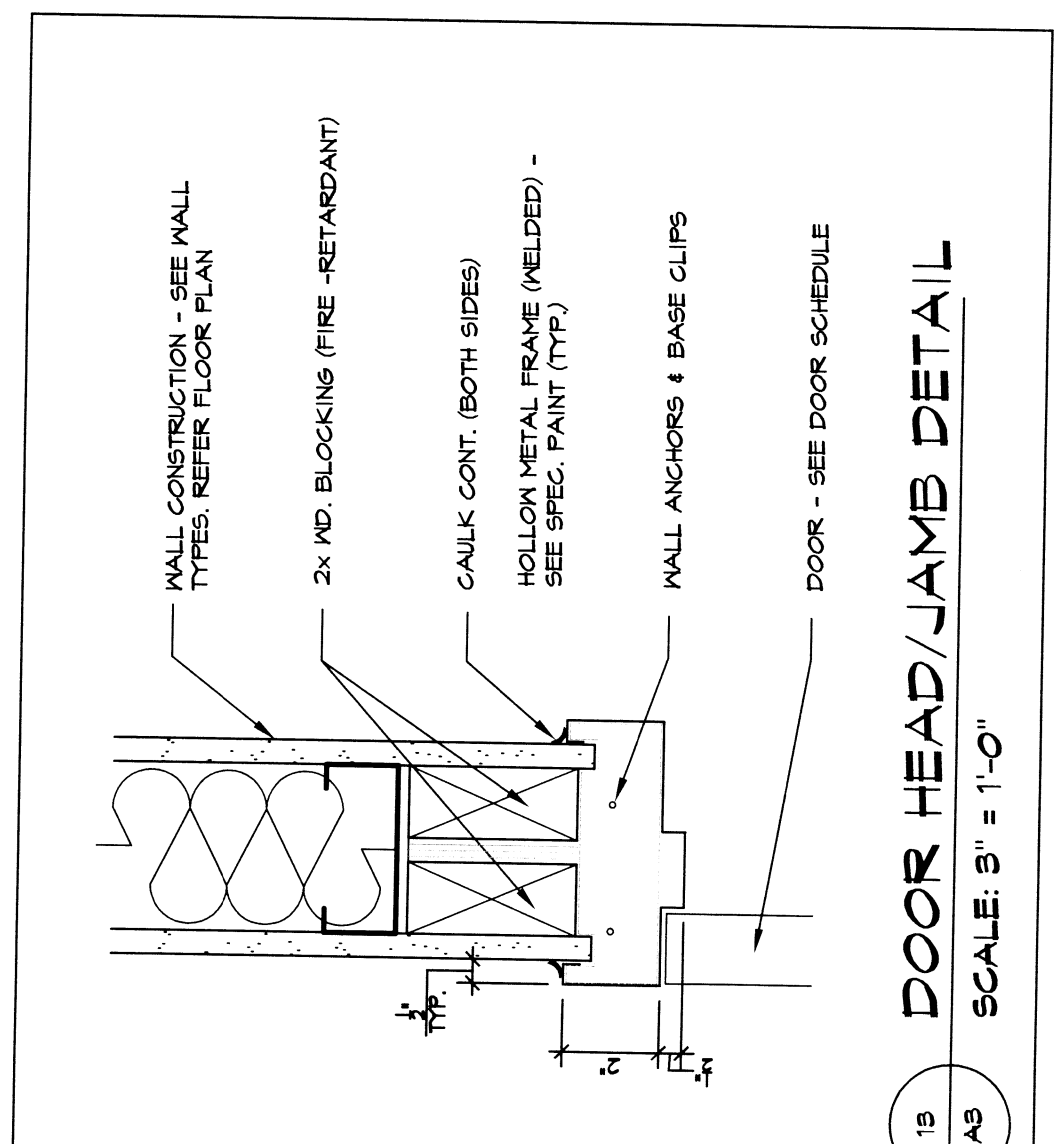
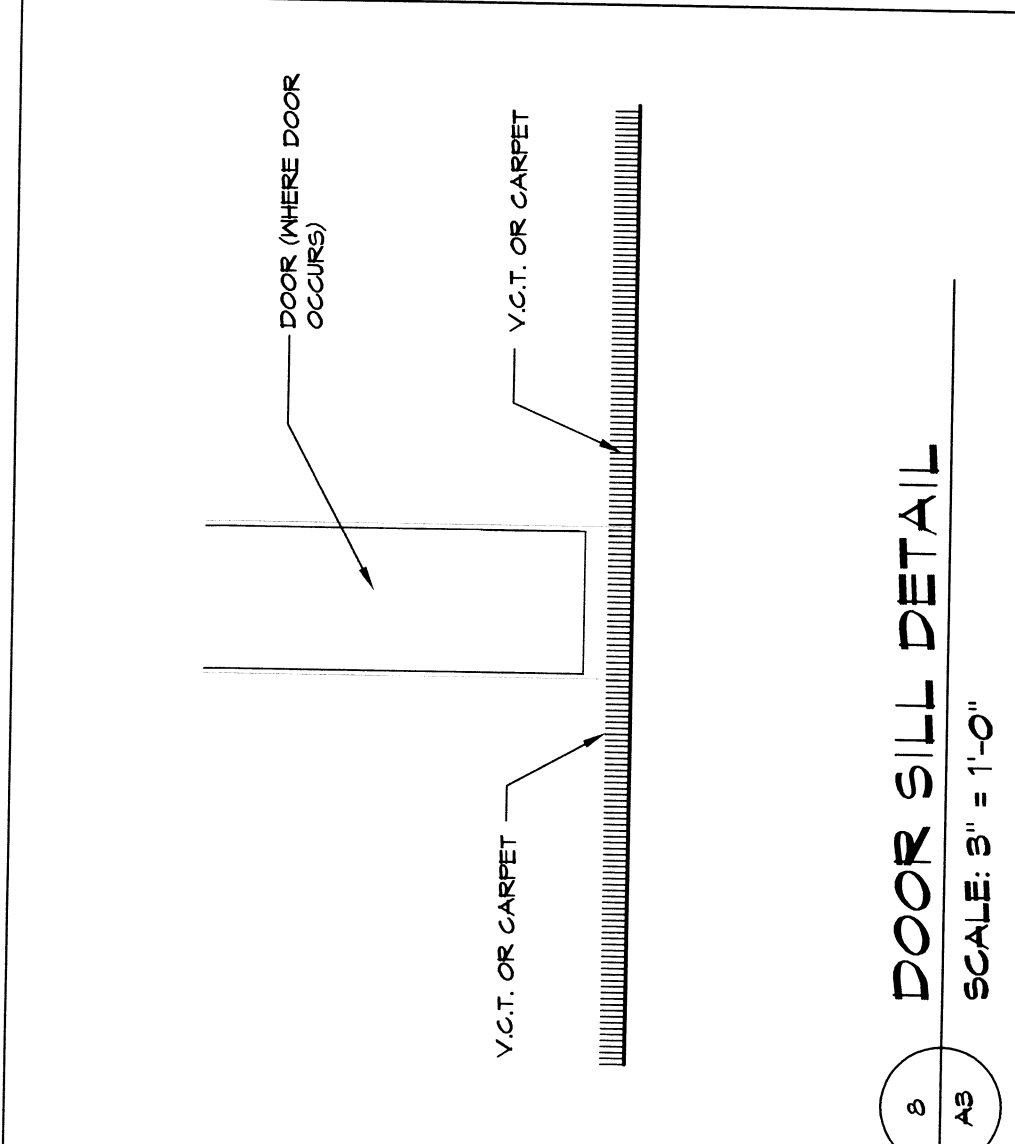
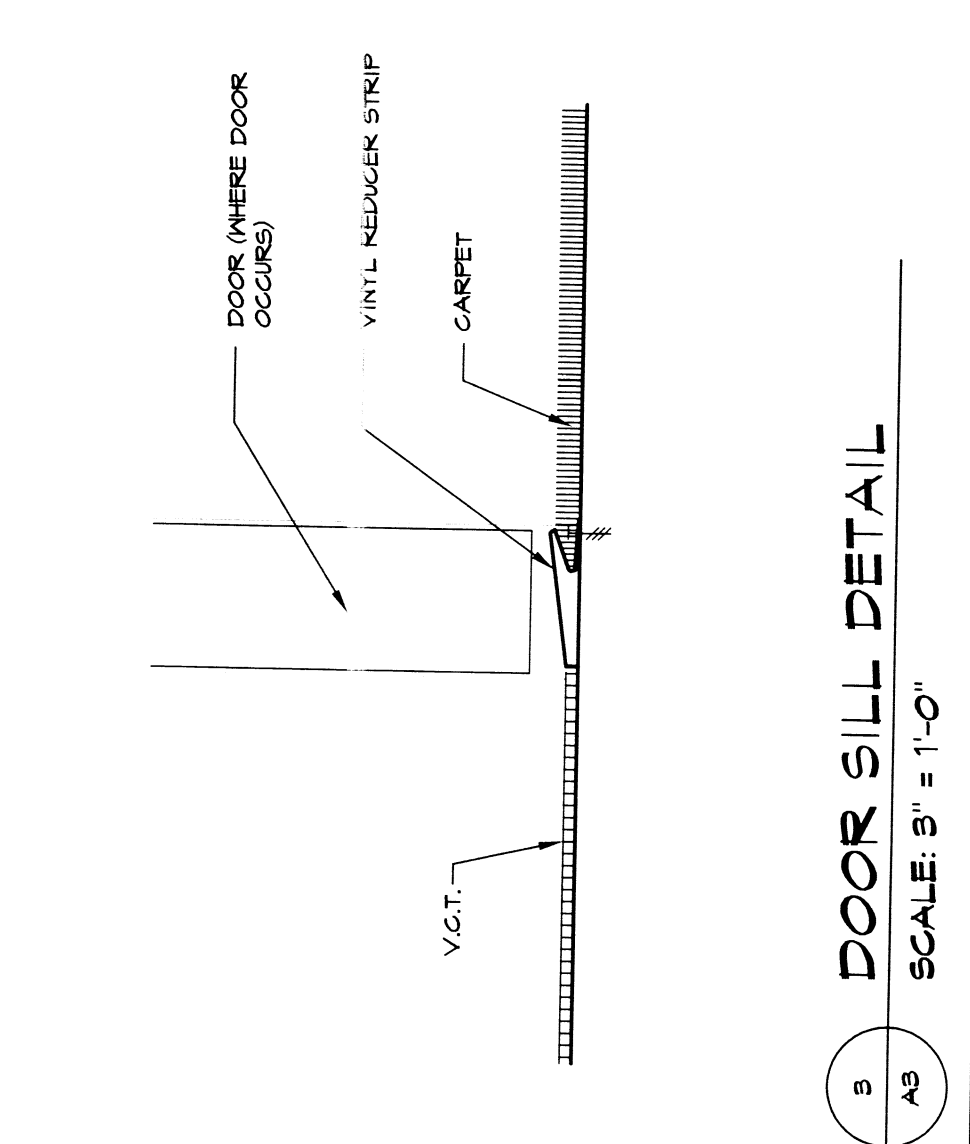
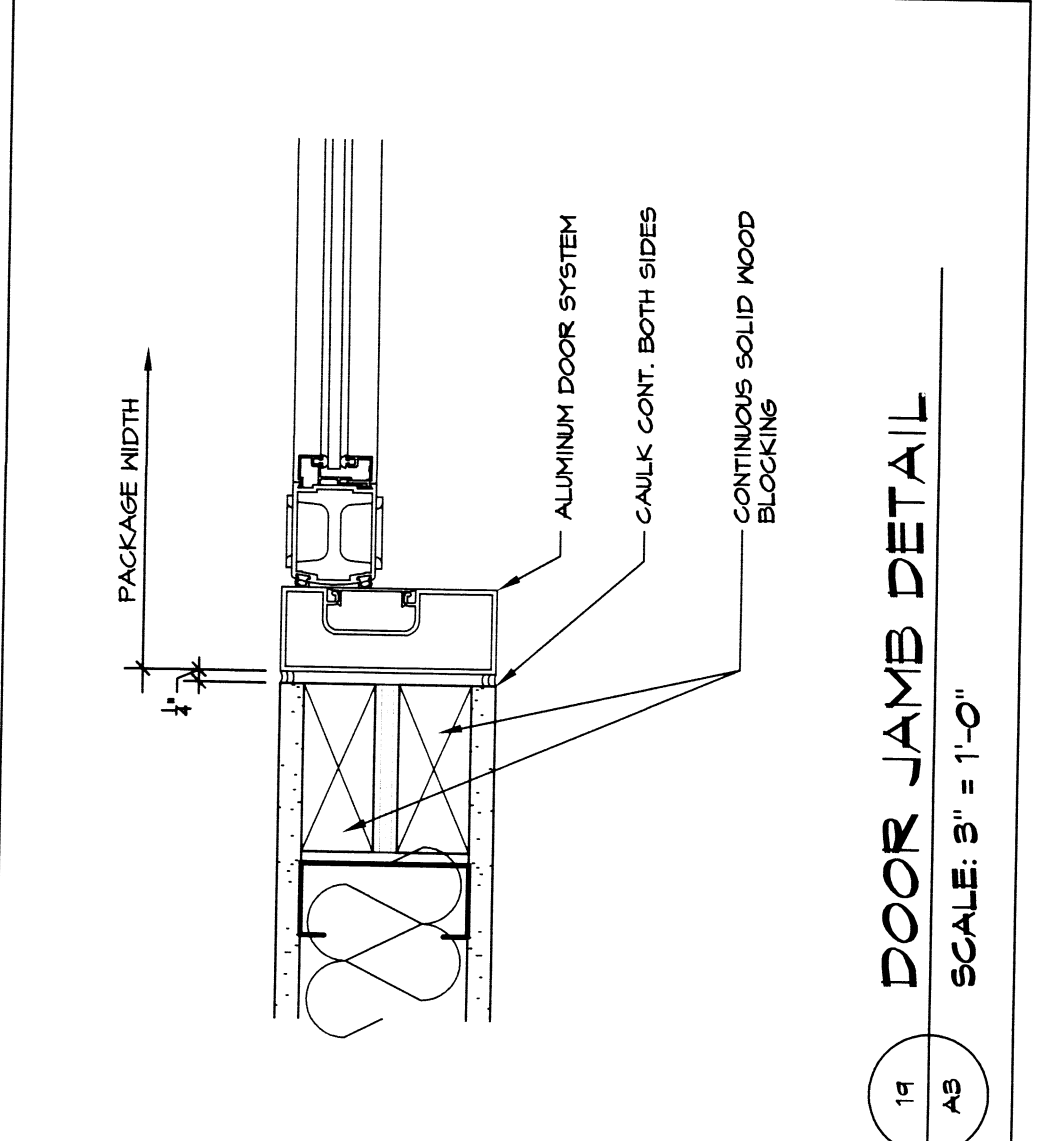
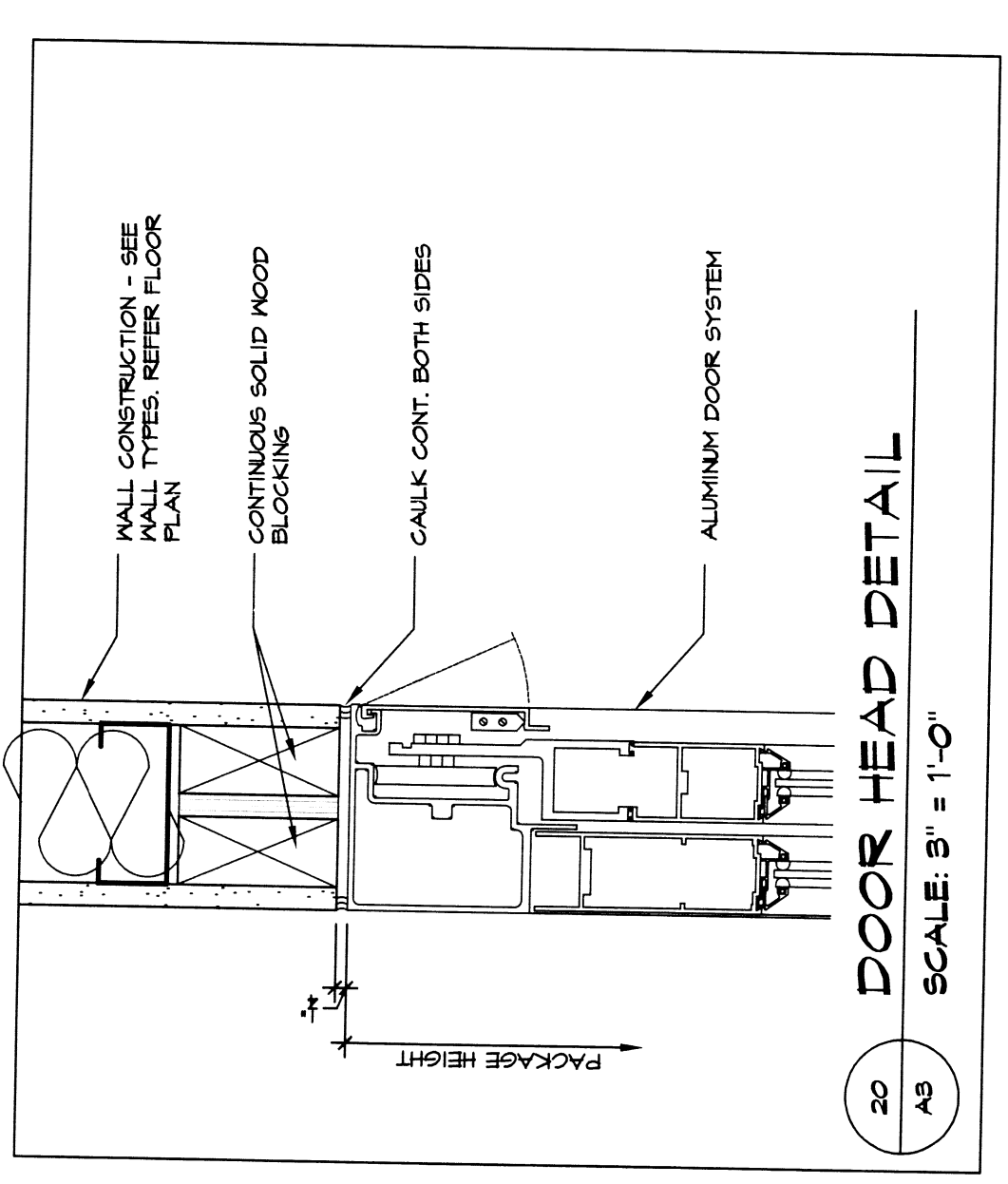
PROJECT NO. HA1-0-43  
 DATE 01/14/2011

ROOM #	ROOM NAME	FLOOR	BASE	WALLS				DOOR	TRIM	REMARKS
				NORTH	EAST	SOUTH	WEST			
B01	WAITING AREA	EX	EX	PAINT	PAINT	PAINT	PAINT	STAIN & V.A. 154	PAINT	PATCH WHERE DISTURBED
B02	STRESS AREA	EX	EX	PAINT	PAINT	PAINT	PAINT	STAIN & V.A. 154	PAINT	PATCH WHERE DISTURBED
B03	CAMERA ROOM	EX	EX	PAINT	PAINT	PAINT	PAINT	STAIN & V.A. 154	PAINT	PATCH WHERE DISTURBED
B04	HOT LAB	EX	EX	PAINT	PAINT	PAINT	PAINT	STAIN & V.A. 154	PAINT	PATCH WHERE DISTURBED
B10	ECHO	EX	EX	PAINT	PAINT	PAINT	PAINT	STAIN & V.A. 154	PAINT	PATCH WHERE DISTURBED
B11	CORRIDOR	EX	EX	PAINT	PAINT	PAINT	PAINT	STAIN & V.A. 154	PAINT	PATCH WHERE DISTURBED
B12	JANITOR	VI	VI	PAINT	PAINT	PAINT	PAINT	STAIN & V.A. 154	PAINT	PATCH WHERE DISTURBED
B13	MULTIPURPOSE ROOM	EX	EX	PAINT	PAINT	PAINT	PAINT	STAIN & V.A. 154	PAINT	PATCH WHERE DISTURBED
B14	LOUNGE ROOM	EX	EX	PAINT	PAINT	PAINT	PAINT	STAIN & V.A. 154	PAINT	PATCH WHERE DISTURBED
B19	ULTRASOUND	EX	EX	PAINT	PAINT	PAINT	PAINT	STAIN & V.A. 154	PAINT	PATCH WHERE DISTURBED
B20	WORK ALCOVE	EX	EX	PAINT	PAINT	PAINT	PAINT	STAIN & V.A. 154	PAINT	PATCH WHERE DISTURBED
B21	CORRIDOR	EX	EX	PAINT	PAINT	PAINT	PAINT	STAIN & V.A. 154	PAINT	PATCH WHERE DISTURBED
B22	PATIENT TOILET	EX	EX	PAINT	PAINT	PAINT	PAINT	STAIN & V.A. 154	PAINT	PATCH WHERE DISTURBED
B25	HOLDING / RECOVERY	EX	EX	PAINT	PAINT	PAINT	PAINT	STAIN & V.A. 154	PAINT	PATCH WHERE DISTURBED
III	STAFF TOILET	EX	EX	PAINT	PAINT	PAINT	PAINT	STAIN & V.A. 154	PAINT	PATCH WHERE DISTURBED
IO4	TOILET	EX	EX	PAINT	PAINT	PAINT	PAINT	STAIN & V.A. 154	PAINT	PATCH WHERE DISTURBED
IO5	TOILET	EX	EX	PAINT	PAINT	PAINT	PAINT	STAIN & V.A. 154	PAINT	PATCH WHERE DISTURBED

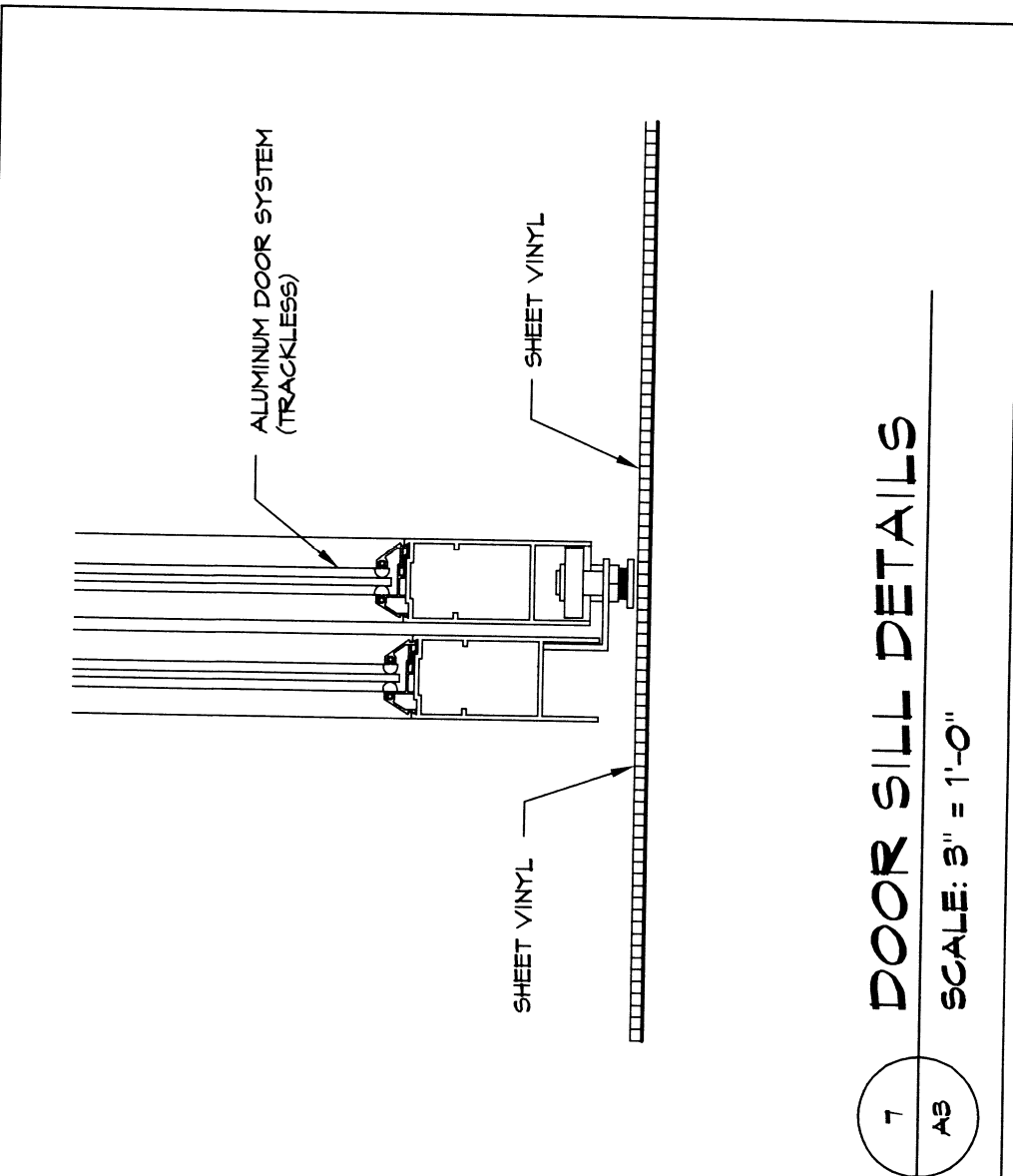
KEY	MATERIAL	MANUFACTURER	SERIES	NUMBER	COLOR
C1	CARPET	MATCH EXISTING	-	-	-
B1	VINYL BASE	MATCH EXISTING	-	-	-
V1	VINYL TILE	MATCH EXISTING	-	-	-
F1	PAINT - MALL	SHERWIN WILLIAMS	MATCH EXISTING	-	-
F2	PAINT - TRIM	SHERWIN WILLIAMS	MATCH EXISTING	-	-

**FINSH SCHEDULE NOTES**

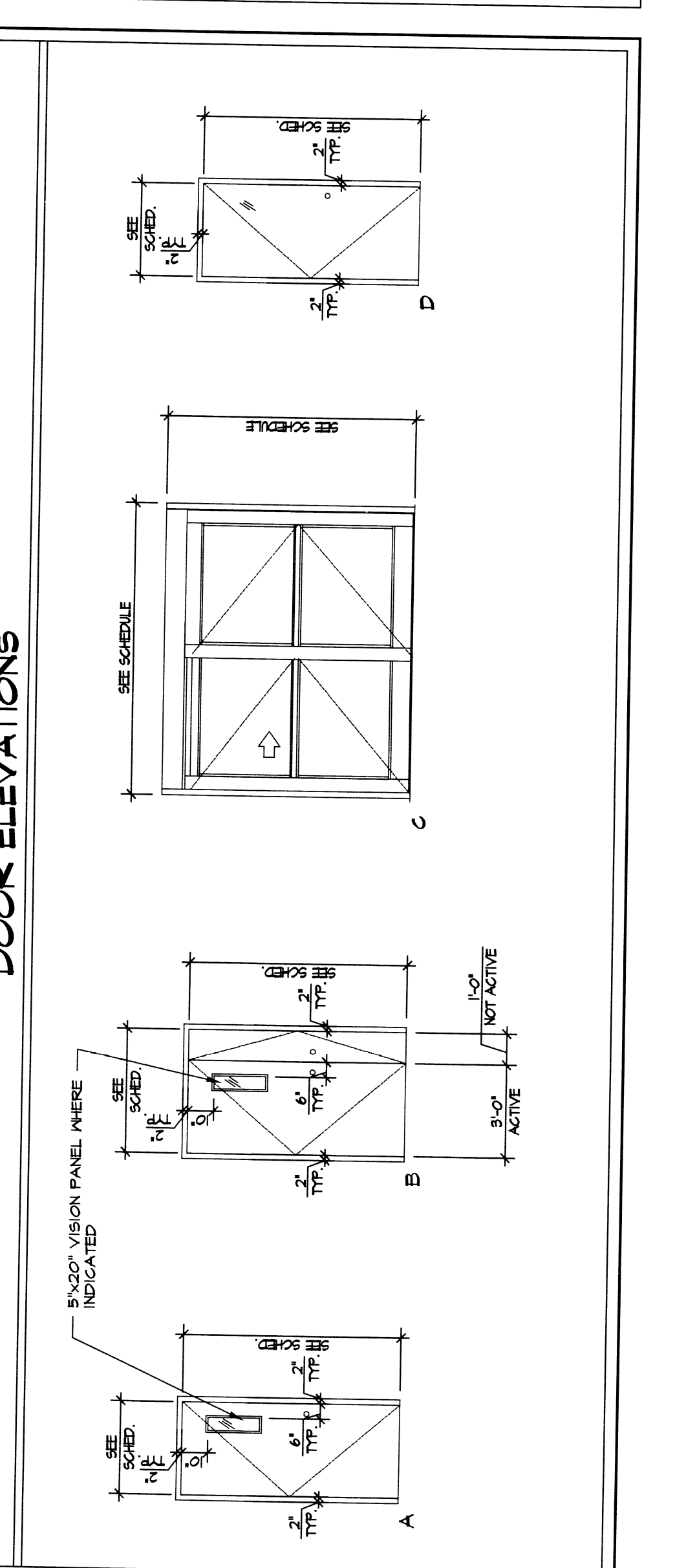
- COORDINATE WITH OTHER REGARDING MATCHING EXISTING FINISHES.
- WHERE SHEET VINYL FLOORING IS DISTURBED, PATCH TO MATCH WITH HEAT WELDED SEAMS FOR HOMOGENITIC SURFACE.



MARK	ELEV	DOOR				DOOR FRAME				REMARKS			
		SIZE	MATL	LBL	GLAZ	LFS	HEAD	JAMB	SILL		MATL	LBL	HDWR
01	B	9'-0" X 1'-0" X 13'-4"	SCM	-	T	2	B/S	B/S	B/S	HM	-	4	-
02	D	2'-0" X 1'-0" X 13'-4"	SCM	-	-	-	B/S	B/S	B/S	HM	-	-	-
03	B	9'-0" X 1'-0" X 13'-4"	SCM	-	-	2	B/S	B/S	B/S	HM	-	2	-
04	A	9'-0" X 1'-0" X 13'-4"	SCM	-	-	-	B/S	B/S	B/S	HM	-	5	-
05	A	9'-0" X 1'-0" X 13'-4"	SCM	-	-	-	B/S	B/S	B/S	HM	-	5	-
06	D	9'-0" X 1'-0" X 13'-4"	SCM	-	-	-	B/S	B/S	B/S	HM	-	5	-
07	D	9'-0" X 1'-0" X 13'-4"	SCM	-	-	-	B/S	B/S	B/S	HM	-	5	-
08	D	9'-0" X 1'-0" X 13'-4"	SCM	-	-	-	B/S	B/S	B/S	HM	-	5	-
09	C	9'-0" X 1'-0" X 13'-4"	ALUMINUMS	-	T	2	20/S	7/S	7/S	AL	-	6	-
10	D	9'-0" X 1'-0" X 13'-4"	SCM	-	-	-	B/S	B/S	B/S	HM	-	5	-



HARDWARE SCHEDULE	
1. 1/2" PAIR BUTT HINGES, BALL BEARINGS	3A-1/2" PAIR BUTT HINGES, BALL BEARINGS
1 - SERVICE LATCH	1 - SERVICE LATCH
1 - DOOR STOP, WALL OR FLOOR MOUNT	1 - DOOR STOP, WALL OR FLOOR MOUNT
1 - DOOR CLOSER	1 - DOOR CLOSER
1 - SET DOOR NOTES	1 - SET DOOR NOTES
2. 1/2" PAIR BUTT HINGES, BALL BEARINGS	1 - 1/2" PAIR BUTT HINGES, BALL BEARINGS
1 - DOOR STOP, WALL OR FLOOR MOUNT	1 - DOOR STOP, WALL OR FLOOR MOUNT
1 - DOOR CLOSER	1 - DOOR CLOSER
1 - SET DOOR NOTES	1 - SET DOOR NOTES
3. 1/2" PAIR BUTT HINGES, BALL BEARINGS	1 - 1/2" PAIR BUTT HINGES, BALL BEARINGS
1 - SET VERTICAL THROU BOLTS - INACTIVE LEAF	1 - SET VERTICAL THROU BOLTS - INACTIVE LEAF
1 - DOOR STOP, WALL OR FLOOR MOUNT	1 - DOOR STOP, WALL OR FLOOR MOUNT
1 - DOOR CLOSER	1 - DOOR CLOSER
1 - SET DOOR NOTES	1 - SET DOOR NOTES
4. 3" PAIR BUTT HINGES, BALL BEARINGS	1 - 3" PAIR BUTT HINGES, BALL BEARINGS
1 - SET VERTICAL THROU BOLTS - INACTIVE LEAF	1 - SET VERTICAL THROU BOLTS - INACTIVE LEAF
1 - DOOR STOP, WALL OR FLOOR MOUNT	1 - DOOR STOP, WALL OR FLOOR MOUNT
1 - DOOR CLOSER	1 - DOOR CLOSER
1 - SET DOOR NOTES	1 - SET DOOR NOTES
5. 1 - SET DOUBLE ACTING DOOR PIVOTS - DAP-3, STANLEY	1 - SET DOUBLE ACTING DOOR PIVOTS - DAP-3, STANLEY
1 - DOUBLE LIPPED STRIKE - DLS-1, STANLEY	1 - DOUBLE LIPPED STRIKE - DLS-1, STANLEY
1 - THUMBLOCK - TBL-1, STANLEY	1 - THUMBLOCK - TBL-1, STANLEY
1 - THUMBLOCK (W/ENERS, RELEASE TOOL)	1 - THUMBLOCK (W/ENERS, RELEASE TOOL)
6. 1 - MANUFACTURERS HARDWARE INCLUDING MOTORIZED OPERATOR	1 - MANUFACTURERS HARDWARE INCLUDING MOTORIZED OPERATOR
2 - MALL VISION PUSH PLATES	2 - MALL VISION PUSH PLATES



**DOOR NOTES**

- ALL DOOR HANDLES SHALL BE OF LEVER TYPE, MEETING CURRENT ADA STANDARDS, (AS NOTED IN THE HARDWARE SCHEDULE). DOOR HANDLES TO ROOMS CONSTITUTING A HAZARDOUS (ELECTRICAL ROOMS, MECHANICAL ROOMS, SOLID UTILITY ROOMS, ETC.) SHALL BE LEVER TYPE WITH A KNURLED FINISH ON THE GRIP SURFACE.
- ALL DOOR LEVERS SHALL REMAIN NON-RIGID AT LOCKED CONDITION, EXCEPT AS NOTED.
- ALL LOCKSETS & LATCHES SHALL BE OF CYLINDRICAL DESIGN.
- ALL HARDWARE FINISH SHALL BE BRUSHED STAINLESS STL. (6032D)
- ALL PRODUCTS SPECIFIED ON AN OR EQUAL BASIS UNLESS OTHERWISE NOTED.
- PROVIDE REQUIRED POWER SUPPLY SYSTEMS FOR OPERATING ALL ELECTROMAGNETIC LOCKS, ELECTRONIC CYLINDER SYSTEMS, COORD. REQUIREMENTS W/ELC.
- MARLOCK ELECTRONIC CYLINDER SYSTEMS, COORD. REQUIREMENTS W/ELC.
- ALL ELECTROMAGNETIC LOCKS, ELECTROMECHANICAL LOCKS, & ELECTRIC STRIKES SHALL BE INSTALLED WITH THE HANDLE END OF THE LOCKING MECHANISM WHEN THE FIRE ALARM IS ACTIVATED OR ELECTRICAL POWER IS INTERRUPTED.
- ALL STAINLESS STEEL KICKPLATES SHALL BE 2" LESS THAN DOOR WIDTH X 12" HIGH X 1/4" THICK (MIN.) AND SHALL BE MOUNTED 1" FROM THE BOTTOM OF THE DOOR. SEE SPECIFICATION.
- ALL HOLLOW METAL FRAMES SHALL BE SHOP WELDED UNLESS NOTED OTHERWISE.
- SPECIES OF ALL DOORS SHALL BE RED OAK TO MATCH EXISTING; SEE SPECIFICATION FOR ADDITIONAL INFORMATION.

**ABBREVIATIONS**

AL	ALUMINUM STOREFRONT SYSTEM	SCM	SOLID CORE WOOD
DR	DOOR	SS	STAINLESS STEEL
HM	HOLLOW METAL	STL	STEEL
HM	INSULATED HOLLOW METAL	T	TEMPERED
K(12)	KICKPLATE (HEIGHT)	TI	TEMPERED INSULATED
MTL	METAL	V.I.F.	VERIFY IN FIELD
MN	MINERAL CORE	MD	WOOD
PTD	PAINTED	1/4 MG	1/4" WIRE GLASS
		1/4 T	1/4" TEMPERED GLASS