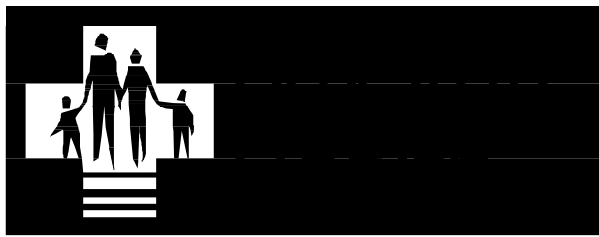
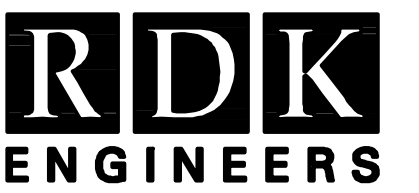


Notes

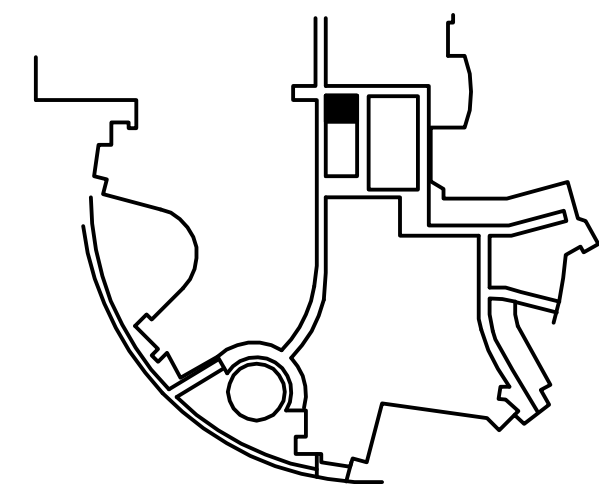


Baystate
Franklin Medical Center



Richard D. Kimball Company, Inc.
200 Brickstone Square
Andover, MA 01810-1488

Key Plan



Seal

BAYSTATE FRANKLIN MEDICAL
CENTER

CT-2 & X-RAY 2 INSTALLATION
PROJECT

Project Number
02164.000

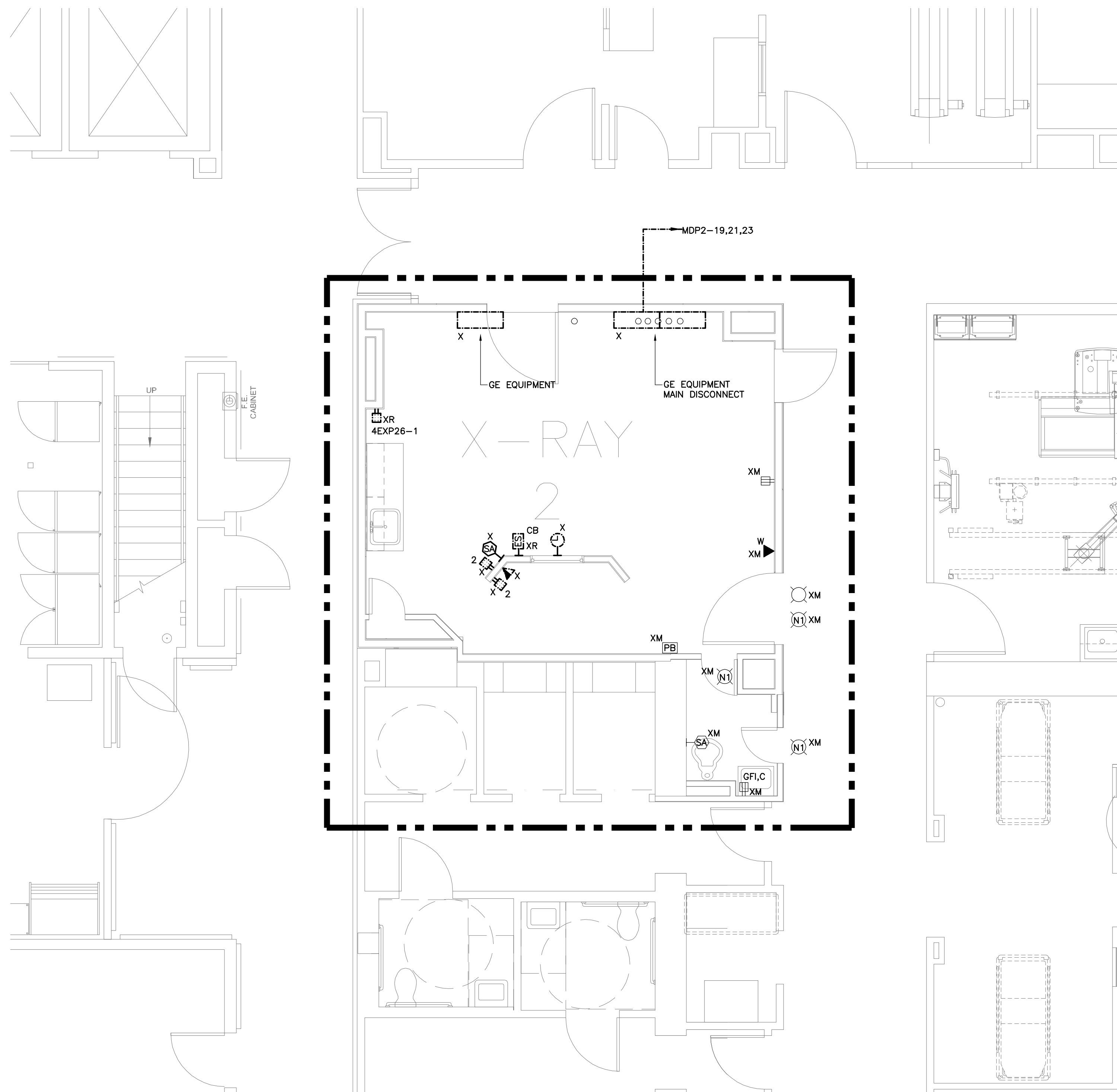
Scale
1/4" = 1'-0"

Date
12/08/11

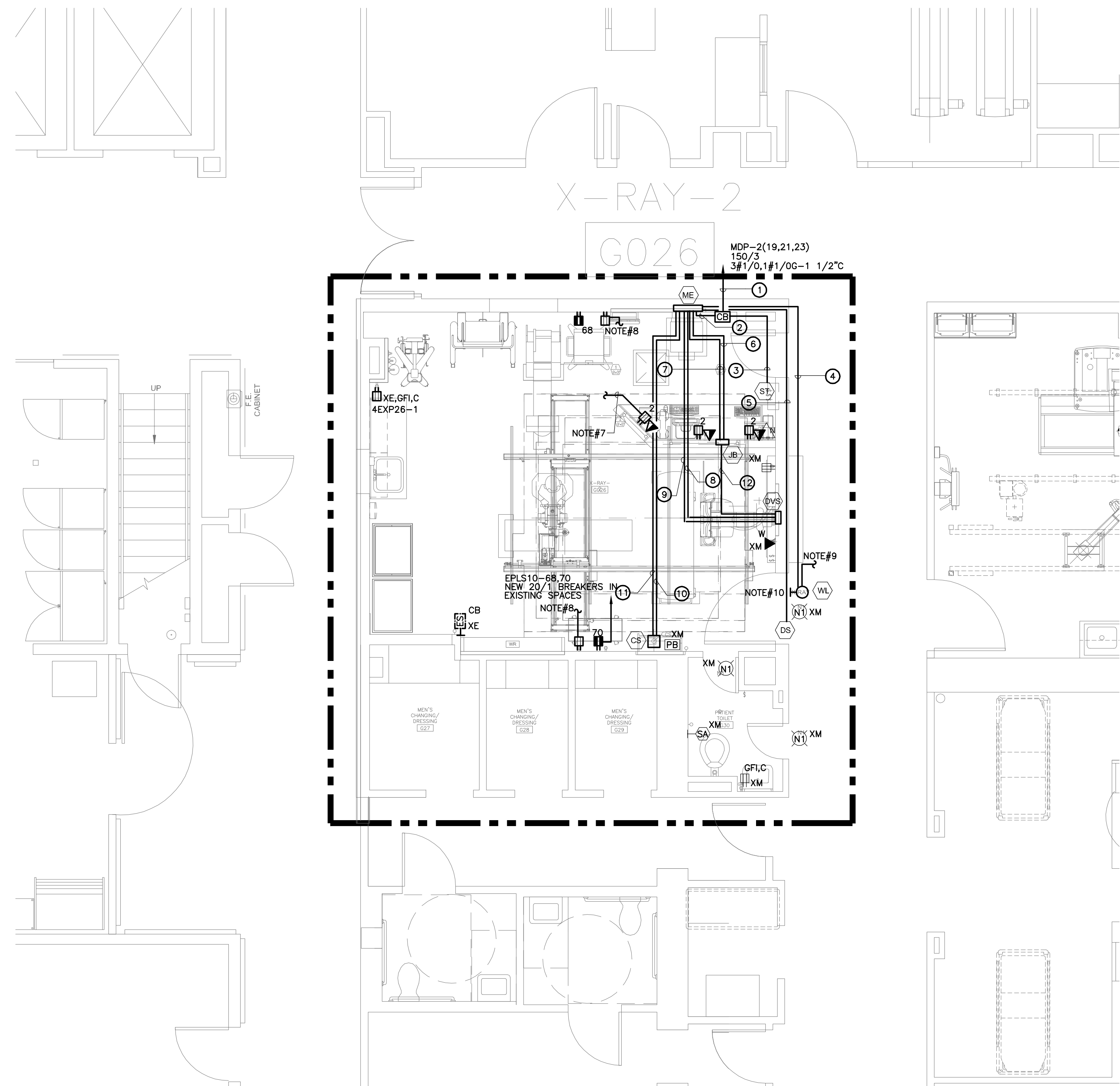
Issue
ISSUED FOR BID

Title
**ELECTRICAL POWER
XRAY-2 ROOM
PART PLANS**

E2.3



XRAY-2 ROOM DEMOLITION PART PLAN
SCALE: 1/4"=1'-0"



XRAY-2 ROOM NEW WORK PART PLAN
SCALE: 1/4"=1'-0"

POWER DEMOLITION NOTES:

- REFER TO DRAWING E0.1 FOR LEGEND, SYMBOLS AND GENERAL NOTES.
- REFER TO THE ARCHITECTURAL DRAWINGS FOR THE FULL EXTENT OF THE SCOPE OF DEMOLITION, DISCONNECT AND MAKE SAFE ALL ELECTRICAL EQUIPMENT IDENTIFIED FOR REMOVAL ON THE HVAC, PLUMBING AND FIRE PROTECTION PLANS. THE ELECTRICAL SCOPE MAY EXTEND BEYOND THE AREA DEFINED BY THE ARCHITECTURAL DEMOLITION LIMITS TO FULLY COMPLY WITH VARIOUS REQUIREMENTS DEFINED BY THESE NOTES.
- THE ELECTRICAL DEMOLITION PLANS AND DETAILS INDICATE THE GENERAL INTENT AND ARE NOT INTENDED TO SHOW ALL ITEMS TO BE REMOVED OR RETAINED. THE ELECTRICAL CONTRACTOR SHALL VISIT THE SITE PRIOR TO THE SUBMISSION OF BIDS TO BECOME FAMILIAR WITH THE ACTUAL CONDITIONS AND EXTENT OF WORK. DEVICES AND EQUIPMENT LOCATED ON WALLS AND/OR CEILING TO BE REMOVED SHALL BE DISCONNECTED AND MADE SAFE. THE ELECTRICAL CONTRACTOR SHALL NOTIFY THE OWNER'S REPRESENTATIVE OF ANY UNANTICIPATED HIDDEN CONDITIONS ENCOUNTERED DURING DEMOLITION.
- THE ELECTRICAL CONTRACTOR SHALL BE RESPONSIBLE FOR THE REPAIR OF ALL SYSTEMS OR BUILDING COMPONENTS DAMAGED DURING THE EXECUTION OF THE WORK. DAMAGE SHALL INCLUDE, BUT NOT BE LIMITED TO DESTRUCTION OR DISPOSAL OF ITEMS INTENDED TO REMAIN OR TO BE SALVAGED.
- THE ELECTRICAL CONTRACTOR SHALL CIRCUIT TRACE AND LABEL ALL EXISTING BRANCH CIRCUITS AND FEEDERS WITHIN THE AREA OF DEMOLITION SCOPE PRIOR TO DE-ENERGIZING AND DISCONNECTION. ALL CIRCUITS WITHIN PANELBOARDS IDENTIFIED FOR REMOVAL SHALL BE TRACED AND LABELED TO ENSURE THAT NO AREA OUTSIDE THE DEMOLITION SCOPE LIMIT IS AFFECTED.
- THE ELECTRICAL CONTRACTOR SHALL IDENTIFY ALL BRANCH CIRCUITS, FEEDERS AND SYSTEM COMPONENTS, WHICH ARE TO REMAIN WITHIN THE AREA OF DEMOLITION SCOPE. THERE SHALL BE NO INTERRUPTION OF SERVICE TO ANY AREA OUTSIDE THE SCOPE LIMITS WITHOUT APPROVAL FROM THE OWNER'S REPRESENTATIVE. EXISTING EQUIPMENT TO REMAIN SHALL BE LEFT IN A CODE COMPLIANT MANNER.
- THE ELECTRICAL CONTRACTOR SHALL DE-ENERGIZE AND REMOVE ALL CONDUCTORS AND RACEWAYS TO THEIR POINTS OF ORIGIN WITHIN THE AREA OF DEMOLITION SCOPE. ITEMS IDENTIFIED FOR DEMOLITION SHALL NOT BE ABANDONED IN PLACE. RACEWAYS THAT ENTER MASONRY WALLS AND FLOORS SHALL BE CUT FLUSH AT THE SURFACE FOR PATCHING BY OTHERS. ALL CIRCUIT BREAKERS ASSOCIATED WITH THE DEMOLITION SCOPE SHALL BE DE-ENERGIZED AND LABELED SPARE.
- THE ELECTRICAL CONTRACTOR SHALL TEMPORARILY SUPPORT ALL ITEMS TO REMAIN THAT ARE AFFECTED BY THE DEMOLITION OF BUILDING STRUCTURAL COMPONENTS (WALLS, CEILING, ETC.). TEMPORARILY SUPPORTED ITEMS SHALL BE PERMANENTLY SUPPORTED AND INSTALLED WHEN FINALIZED STRUCTURES ARE IN PLACE.
- ALL REMOVED ITEMS SHALL BE LEGALLY DISPOSED OF UNLESS IDENTIFIED FOR REUSE. THE OWNER'S REPRESENTATIVE SHALL INSPECT ALL RETAINED ITEMS PRIOR TO PLACEMENT IN THE IDENTIFIED STORAGE LOCATION BY THE ELECTRICAL CONTRACTOR.
- ALL DEMOLITION SCOPE ASSOCIATED WITH LOW VOLTAGE SYSTEMS INCLUDING BUT NOT LIMITED TO TELEPHONE, DATA, SECURITY, PAGING, CCTV, ETC. SHALL BE INCLUDED IN THIS CONTRACT.

POWER NOTES:

- REFER TO DRAWING E0.1 FOR LEGEND, SYMBOLS AND GENERAL NOTES.
- REFER TO ARCHITECTURAL DRAWINGS FOR ASSOCIATED NOTES, MOUNTING DETAILS, HEIGHTS AND EXACT LOCATIONS OF ALL DEVICES.
- CIRCUIT NUMBERS ARE DIAGRAMMATIC. EXACT NUMBERS SHALL BE DETERMINED IN THE FIELD AND REFLECTED ON AS-BUILT DOCUMENTATION BY THE ELECTRICAL CONTRACTOR. THE ASSOCIATED CIRCUIT NUMBERS THAT ARE APPLIED TO EACH DEVICE AND PIECE OF EQUIPMENT INFERS INTERCONNECTING BRANCH CIRCUITRY. INTERCONNECTING BRANCH WIRING SHALL BE SIZED EQUAL TO THE HOMERUN UNLESS NOTED OTHERWISE.
- VOLTAGE DROP HAS BEEN CONSIDERED IN THE DESIGN OF ALL BRANCH CIRCUITRY AND FEEDER SIZES BASED UPON THE ILLUSTRATED EQUIPMENT LAYOUTS AND SHORTEST CONDUCTOR/RACEWAY ROUTING. THE ELECTRICAL CONTRACTOR SHALL BE RESPONSIBLE FOR DEVIATIONS TAKEN THAT WILL INCREASE CONDUCTOR/RACEWAY ROUTING LENGTHS. BRANCH CIRCUITS LONGER THAN 75' FOR 120V FROM PANEL TO LAST OUTLET SHALL BE INCREASED A MINIMUM OF ONE SIZE ABOVE THAT SPECIFIED TO LIMIT VOLTAGE DROP TO LESS THAN 3%. FEEDERS SHALL FOLLOW SIMILAR GUIDELINES AND BE LIMITED TO 2% DROP.
- POWER BRANCH CIRCUITRY SHALL BE INSTALLED IN CONDUIT FROM THE PANELBOARD TO THE FIRST OUTLET AND/OR WHERE EXPOSED. POWER BRANCH CIRCUITRY MAY BE HOSPITAL GRADE TYPE AC CABLE WHERE CONCEALED ABOVE SUSPENDED CEILING AND IN METAL STUD WALLS FOR NORMAL POWER CIRCUITS ONLY. LIFE SAFETY AND CRITICAL BRANCH CIRCUITS SHALL BE INSTALLED IN CONDUIT.
- MAINTAIN CONTINUITY OF BRANCH CIRCUITRY ASSOCIATED WITH ALL EXISTING POWER DEVICES TO REMAIN.
- UTILIZE CIRCUIT MADE AVAILABLE DURING DEMOLITION OF THE EXISTING X-RAY WING WALL TO SERVE THE NEW RECEPTACLES AT THE CONTROL STATION.
- CONNECT NEW WALL RECEPTACLES TO EXISTING NORMAL POWER RECEPTACLE CIRCUIT WITHIN X-RAY ROOM.
- UTILIZE EXISTING 120V CIRCUIT TO SERVE NEW "X-RAY IN USE" SIGN.
- "X-RAY IN USE" SIGN SHALL BE A LED EDGE LIT ACRYLIC PANEL WITH "X-RAY IN USE" WITH RED LETTERS, DOUBLE FACE AND MIRROR BACKGROUND. SIONTEX INC# CR5-C15 OR EQUAL.

CONDUIT REQUIRED						
GENERAL NOTES						
1. ALL CONDUIT RUNS MUST TAKE MOST DIRECT ROUTE POINT TO POINT.						
2. ALL CONDUIT RUNS MUST HAVE A FULL STRING.						
A	CONDUIT SUPPLIED AND INSTALLED BY PHILIPS	CONDUIT QUANTITY (CONDUIT TYPE)	MINIMUM CONDUIT SIZE	MAXIMUM CONDUIT LENGTH	SPECIAL OR WIRE REQUIREMENTS	
B	CONDUIT SUPPLIED AND INSTALLED BY PHILIPS					
C	CONDUIT AND CABLES SUPPLIED AND INSTALLED BY CONTRACTOR					
D	POWER					
E	GROUND					
F	SIGNAL CABLES					
G	VIDEO CABLES					
H	HIGH TENSION POWER					
I	COOLING HOSES					
HLR #	FROM	TO				
C	1	PHL (CB)	1 (P)	2'		3#10, 1#10G-2"
B	2	CB (ME)	1 (P)	2'		
C	3	CB (ST)	1 (P)	3/4'		2#12-3/4"
C	4	ME (WL)	1 (P)	3/4'		2#12-3/4"
C	5	ME (DS)	1 (P)	3/4'		2#12-3/4"
A	6	ME (JB)	1 (P)	1 1/2'		55'
A	7	ME (JB)	1 (S)	2'		55'
A	8	ME (DVS)	1 (P)	1 1/2'		55'
A	9	ME (DVS)	1 (S)	2'		55'
A	10	ME (CS)	1 (HP)	2 1/2'		32'
A	11	ME (CS)	1 (S)	2'		32'
A	12	ME (DVS)	1 (F/S)	1 1/2'		32'

Electrical Legend		
ITEM NUMBER	DESCRIPTION	PHILIPS DETAIL SHEET
B	400V, 3 PHASE 90AMP CIRCUIT BREAKER WITH SHUNT TRIP AND LOAD SIDE PRESSURE LUGS FOR #2AWG EXTRA FLEXIBLE CABLE (TYPE B TYPE 3100X LOCKTIGHT OR SIMILAR). RUN POWER FROM BREAKER TO WALL BOX "ME" LEAVING AN 8" TAIL SEE SHEET "E01" FOR POWER QUALITY REQUIREMENTS. LOCATION PER LOCAL CODE OR OWNER REQUIREMENTS. (NOT SHOWN ON PLAN)	E01
B	SHUNT TRIP (EMERGENCY OFF) - LARGE MUSHROOM HEAD BUTTON ON REMOTE CONTROL STATION WITH CONTACTS TO OPERATE FEATURE OF "OFF". LOCATION PER LOCAL CODE OR OWNER REQUIREMENTS.	E01
B	WARNING LIGHT - PROVIDE AN INCANDESCENT SURFACE OR FLUSH MOUNTED LIGHT FIXTURE ABOVE DOOR TO INDICATE WHEN X-RAY IS ON.	E01
B	DOOR SWITCH - 120V, SA SWITCH LIMITED TO OPEN WHEN DOOR IS OPEN. MOUNT IN UPPER CORNER ON STRIKE SIDE OF MAIN ENTRY DOOR(S) (COOPER NO. 1600 OR EQUIVALENT), IF REQUIRED BY LOCAL CODE OR PHYSICIST OF RECORD.	E01
D	19 1/4" X 6 7/8" X 4"D FLANGED-EDGE TERMINAL WALL BOX WITH REMOVABLE SCREW-TYPE COVER PLATE, SURFACE MOUNTED 75" AFF TO TOP OF BOX. CONDUITS TO TERMINAL ON TOP & SIDES OF THE BOX AS REQUIRED.	
B	6"W X 6"L X 4"D WALL BOX WITH REMOVABLE SCREW-TYPE COVER PLATE, FLUSH MOUNTED 39" AFF TO BOTTOM OF BOX.	
B	6"W X 6"L X 6"D CEILING BOX, FLUSH MOUNTED WITH REMOVABLE SCREW-TYPE COVER PLATE.	
B	19"W X 6 7/8" X 4"D WALL BOX WITH REMOVABLE SCREW-TYPE COVER PLATE, FLUSH MOUNTED 22" AFF TO BOTTOM OF BOX. LOCATION SHOWN IS RECOMMENDED AND MAYBE CHANGED - VERIFY RELOCATION WITH LOCAL PHILIPS SERVICE. FOR CABLES TO "ELV".	
B	PLUG TYPE ETHERNET 10/100/1000 MBIT NETWORK CONNECTOR (1000 MBIT RECOMMENDED). ACCESS THROUGH CUSTOMER'S NETWORK TO VPN SERVICE CAPABLE OF CONNECTION TO THE PHILIPS REMOTE SERVICE NETWORK (RSN). DATACENTER IS NEEDED. REFER TO PAGE N1 FOR RSN CONNECTIVITY OPTIONS. LOCATE WITHIN 10' OF NETWORK CABLE. NETWORK FIBER OPTIC AND ETHERNET CABLING, CONNECTORS, WALL BOXES, PATCH PANELS, ETC. ARE THE RESPONSIBILITY OF THE PURCHASER. PHILIPS ASSUMES NO RESPONSIBILITY FOR PROCUREMENT, INSTALLATION, OR MAINTENANCE OF THE COMPONENTS.	N1

A:\2011\01101038 - B04C - Rev06 - Site - Redesign - Department - Upgrade\Electrical\3011038 E2.3 - P06 - XRAY PART - 12/08/11 - 01/20/11 - 01/20/11