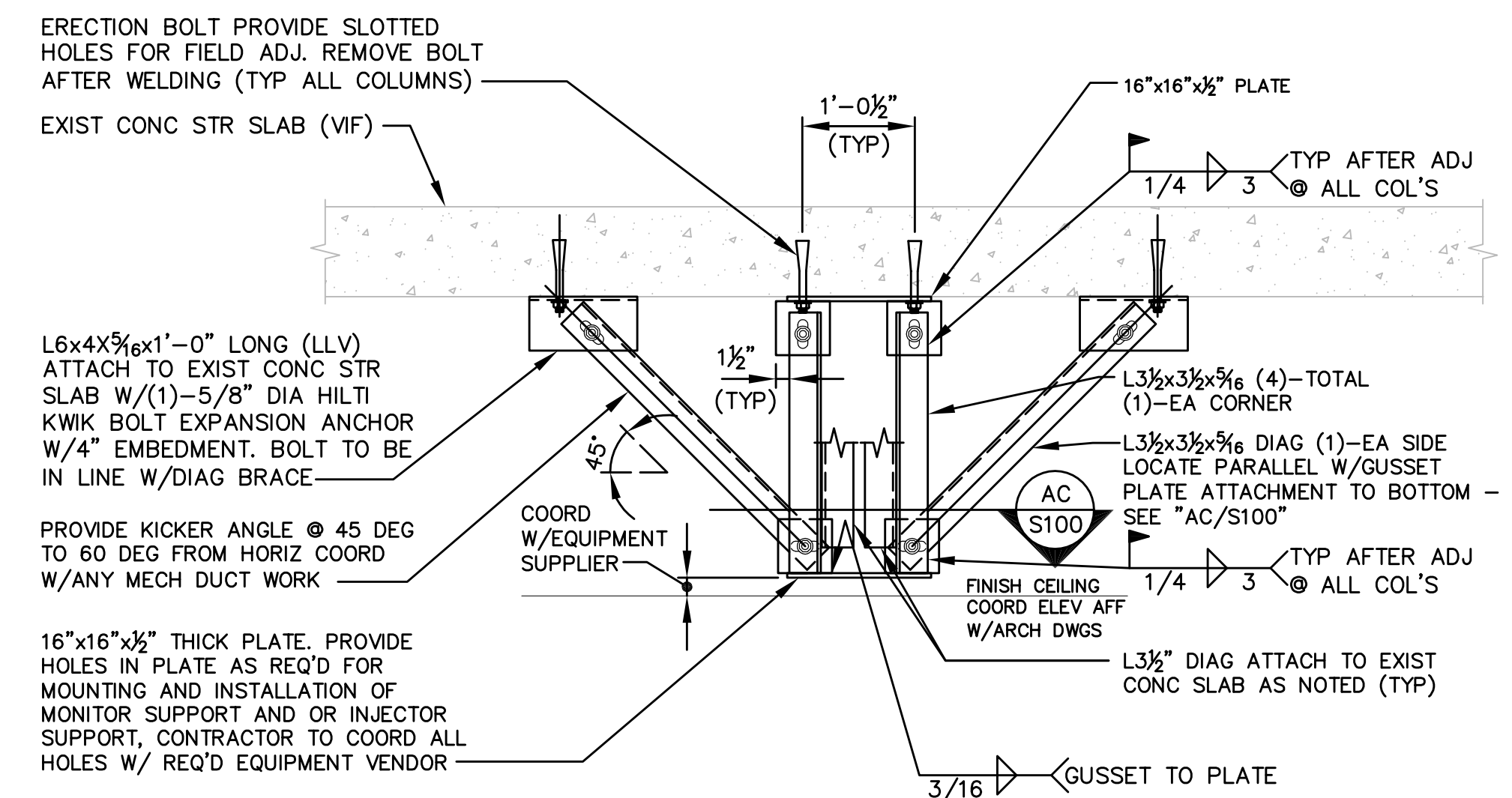


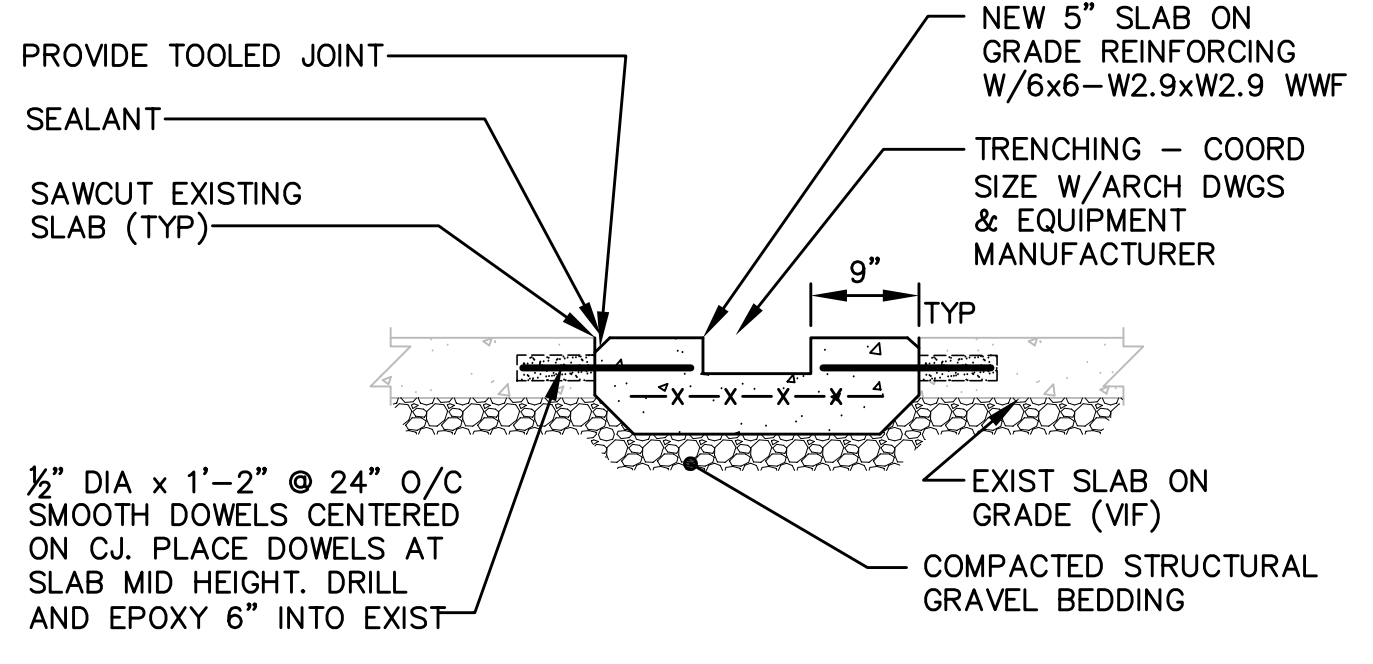
**CT SCAN FOUNDATION PLAN**  
SCALE: 1/4" = 1'-0"

- NOTES:**
- \* - INDICATES COORDINATE FINAL DIMENSION WITH ARCHITECTURAL DRAWINGS, EQUIPMENT SUPPLIER, AND EQUIPMENT CONTRACTOR.
  - SEE GENERAL NOTES AND TYPICAL DETAILS FOR ADDITIONAL REQUIREMENTS.
  - FOR ALL SLAB DEPRESSION REQUIREMENTS AND LOCATIONS SEE ARCHITECTURAL DRAWINGS.
  - CONTRACTORS TO VERIFY ALL CONDITIONS, DIMENSIONS, ELEVATIONS, QUANTITIES, ETC. IN THE FIELD PRIOR TO THE BEGINNING OF ANY NEW CONSTRUCTION. NOTIFY ARCHITECT OF ANY DISCREPANCIES FOUND IMMEDIATELY.
  - CONTRACTOR TO OVER EXCAVATE AND PLACE A 6" THICK PAD OF 3/4" CRUSHED STONE ON GEOTEXTILE FILTER FABRIC UNDERNEATH NEW SLABS.
  - CONTRACTOR TO PROVIDE EARTH SUPPORT OF EXISTING STRUCTURES AND UTILITIES FOR THE INSTALLATION OF NEW STRUCTURES AND UTILITIES. NOTE THAT ALL LOCATIONS REQUIRING EARTH SUPPORT ARE NOT INDICATED ON THE DRAWINGS AND IT IS THE CONTRACTOR'S RESPONSIBILITY TO DETERMINE ALL LOCATIONS REQUIRED AND EXTENT NEEDED.
  - CONTRACTOR TO COORDINATE LOCATION AND DIMENSIONS OF MECHANICAL UNITS AND MECHANICAL UNIT SUPPORT FRAMING WITH MECHANICAL CONTRACTOR AND/OR EQUIPMENT SUPPLIER. STRUCTURE HAS BEEN DESIGNED TO SUPPORT THE EQUIPMENT INDICATED ON THE STRUCTURAL DRAWINGS. IF CHANGES ARE MADE, NOTIFY THE STRUCTURAL ENGINEER IMMEDIATELY FOR SUPPORT VERIFICATION.
  - CONTRACTOR PERFORMING STRUCTURAL WORK SHALL BE RESPONSIBLE FOR ALL SHORING OF EXISTING CONSTRUCTION REQUIRED TO SAFELY COMPLETE WORK.



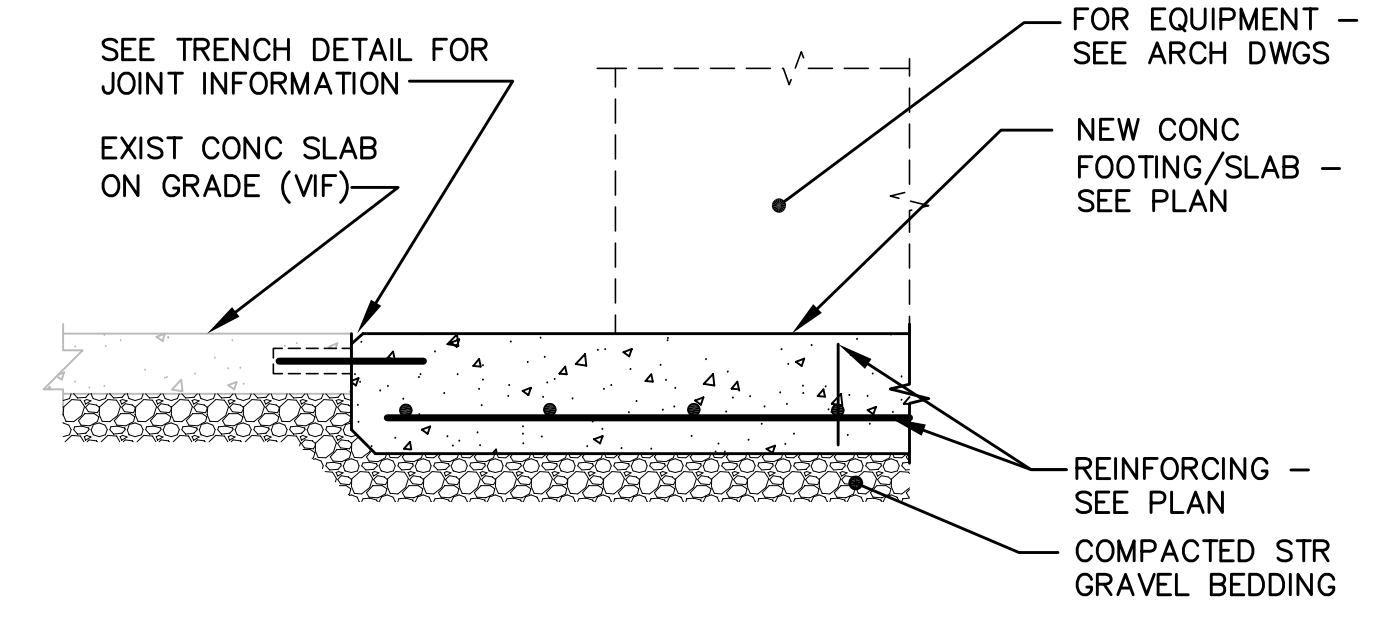
- NOTES:**
- COORDINATE FINAL BOOM LOCATION WITH ARCHITECTURAL DRAWINGS AND EQUIPMENT SUPPLIER.
  - DETAILS BASED ON LOADS REQUIRED FOR PHILIPS EQUIPMENT, IF ALTERNATE EQUIPMENT IS TO BE UTILIZED NOTIFY ARCHITECT AND ENGINEER IMMEDIATELY, PRIOR TO FABRICATION.

**1C FRAMING SECTION**  
S100 / SCALE: 3/4" = 1'-0"



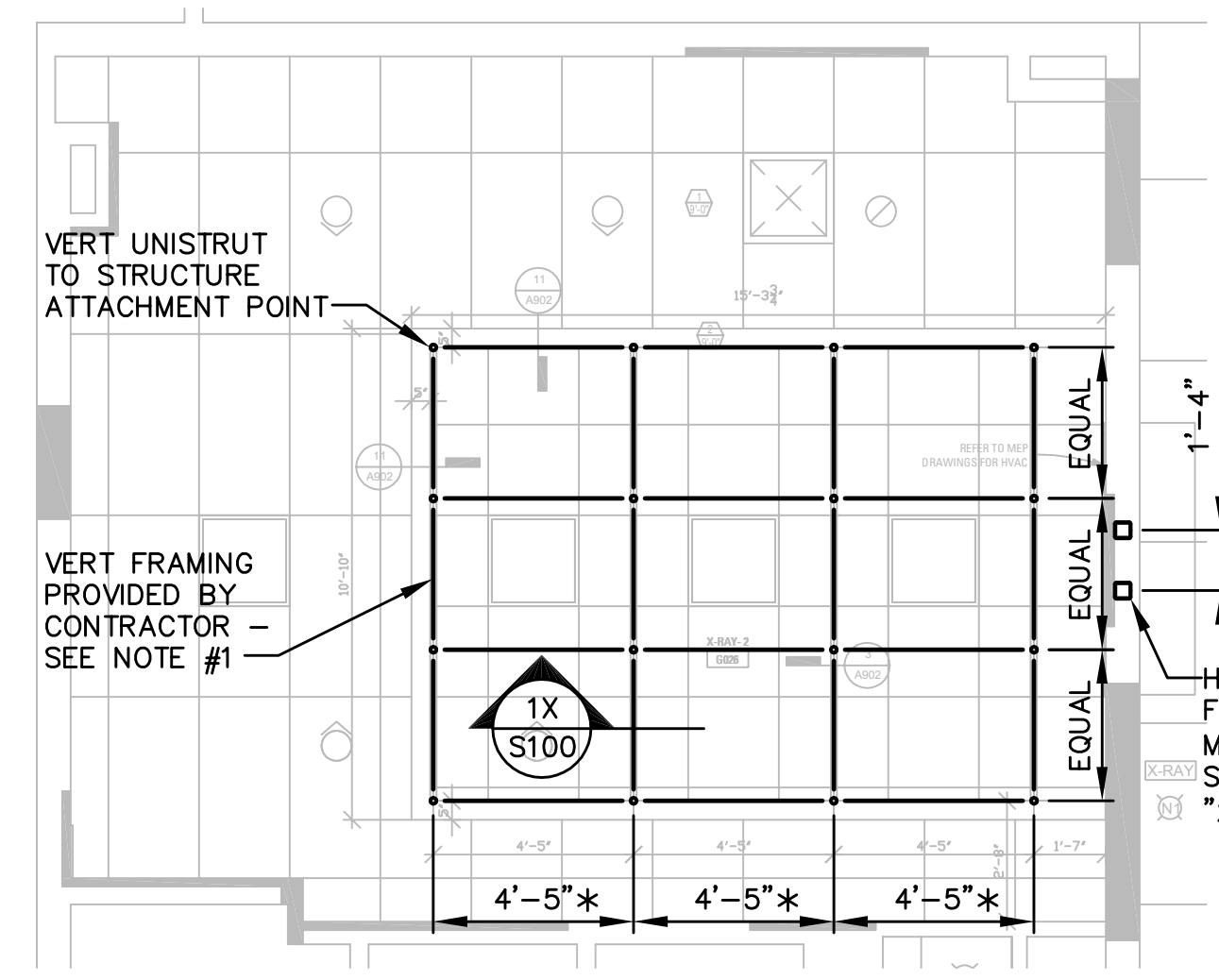
- NOTES:**
- COORDINATE TRENCH LOCATIONS AND EXTENT WITH TRADES REQUIRING TRENCHES.
  - IF EDGE OF TRENCH OCCURS 3'-0" LESS FROM EXISTING SLAB CONSTRUCTION/CONTROL JOINT, REMOVE AND REPLACE SLAB TO THE JOINT. VERIFY IN FIELD.
  - COORDINATE WITH EXISTING IN SLAB PIPING.

**2C DETAIL - TRENCH AT EXISTING**  
S100 / NOT TO SCALE



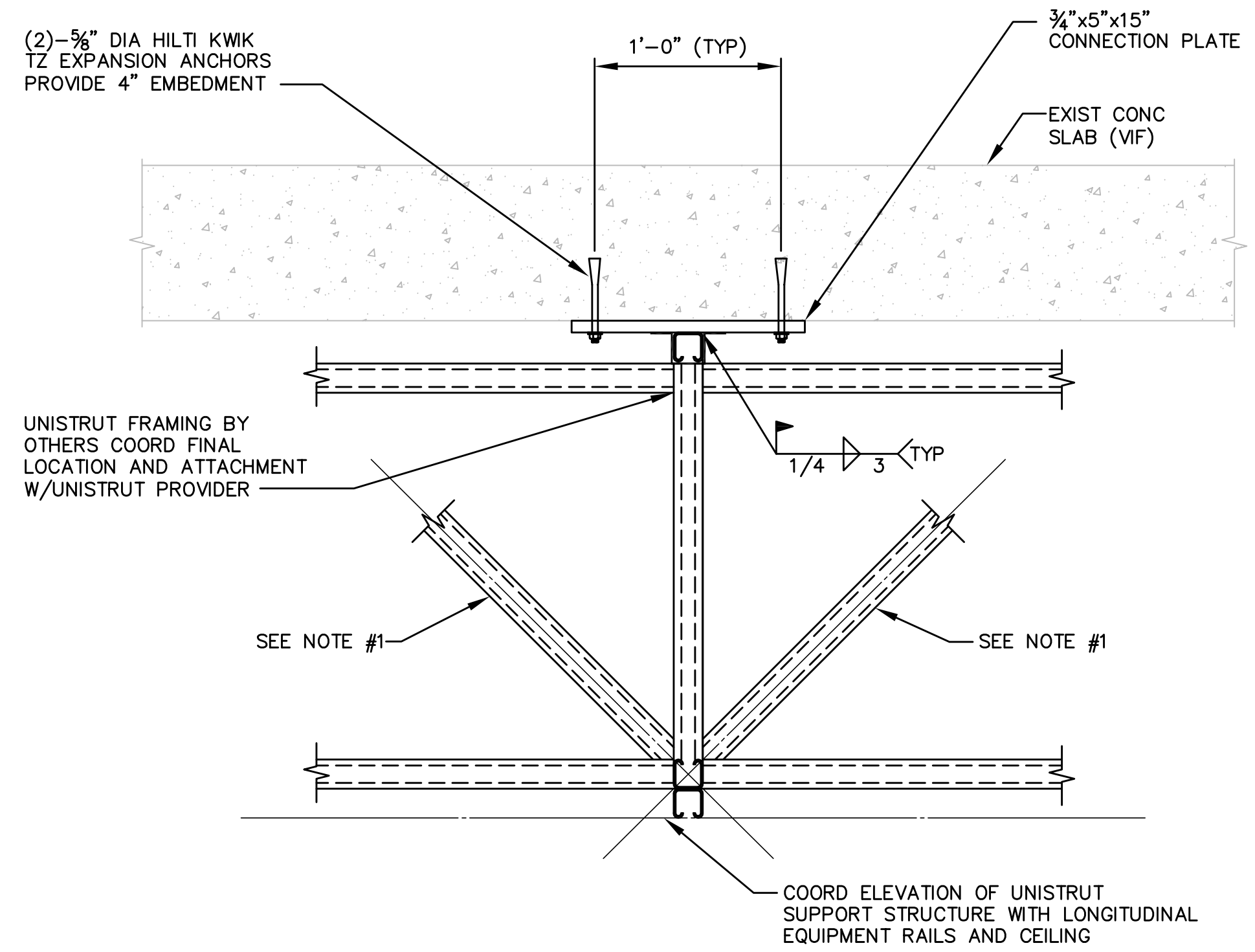
- NOTES:**
- WHERE NEW SLAB INTERSECTS EXISTING PIPING, LEAVE EXISTING PIPING AND SLAB ALONG ITS LENGTH.

**3C CT SCAN SLAB**  
S100 / NOT TO SCALE



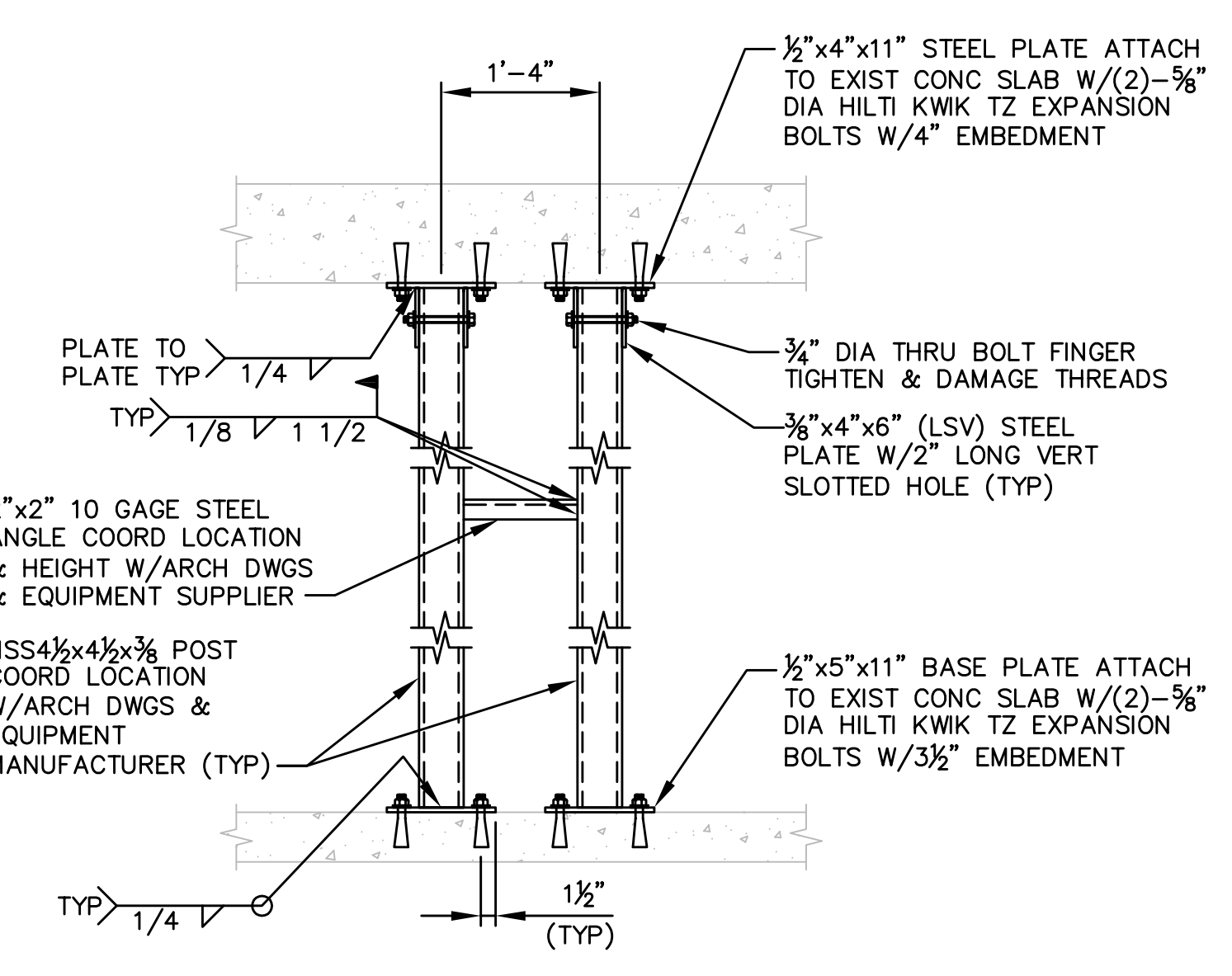
**X-RAY FRAMING PLAN**  
SCALE: 1/4" = 1'-0"

- NOTES:**
- UNISTRUT DESIGN PERFORMANCE REQUIREMENTS: SUBMITTALS AND DETAILS OF UNISTRUT FRAMING AND ATTACHMENT TO STRUCTURAL CONNECTION SHALL INCLUDE A COMPREHENSIVE ENGINEERING ANALYSIS BY A QUALIFIED PROFESSIONAL ENGINEER. SIZE UNISTRUT AND CONNECTIONS TO SUPPORT A 1000# POINT LOAD APPLIED AT ANY LOCATION ALONG THE CEILING GRID. PROVIDE DIAGONAL UNISTRUT BRACING AS REQUIRED TO BRACE AND STABILIZE THE UNISTRUT ASSEMBLY TO THE MAIN STRUCTURE. COORDINATE ALL EQUIPMENT REQUIREMENTS WITH EQUIPMENT SUPPLIER AND MANUFACTURER.
  - CONTRACTOR TO COORDINATE ALL DIMENSIONS AND ELEVATIONS WITH ARCHITECTURAL DRAWINGS AND EQUIPMENT SUPPLIER AND MANUFACTURER.
  - CONTRACTOR AND UNISTRUT DESIGNER SHALL COORDINATE ALL LOADING REQUIREMENTS AND GEOMETRIC SPACING CRITERIA WITH THE EQUIPMENT SUPPLIER AND THE MANUFACTURERS PLANNING GUIDE.
  - FOR ADDITIONAL INFORMATION SEE CT SCAN FOUNDATION PLAN.

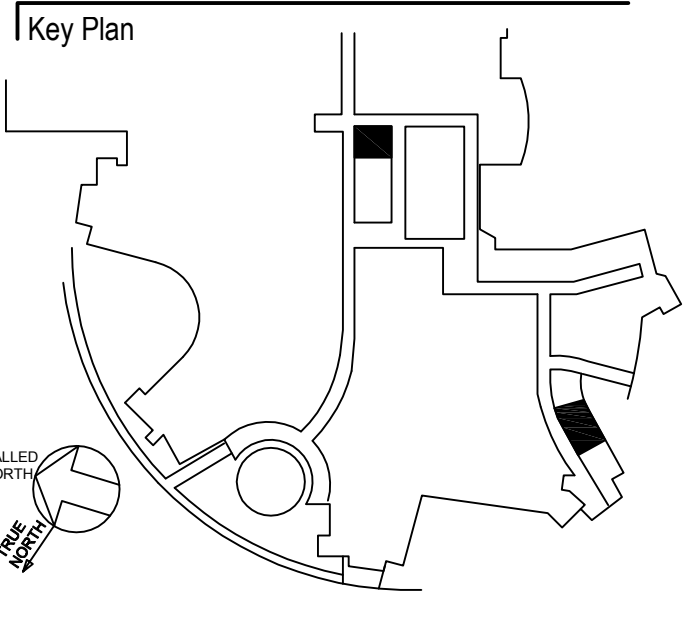


**1X DETAIL FOR OVERHEAD EQUIPMENT SUPPORT**  
S100 / SCALE: 1 1/2" = 1'-0"

- NOTES:**
- DIAGONAL BRACING AS REQUIRED CAN BE ATTACHED TO EXISTING CONCRETE USING POWDER ACTUATED FASTENERS OR EXPANSION ANCHORS. PROVIDE BRACING IN BOTH ORTHOGONAL DIRECTIONS. IN ADDITION TO VERTICAL LOAD OF 1000# AT EACH MOUNTING POINT THE UNISTRUT SHALL BE DESIGNED TO RESIST A 600# FORCE IN EACH DIRECTION AT EACH MOUNTING POINT.
  - CONTRACTOR AND UNISTRUT DESIGNER SHALL COORDINATE ALL LOADING REQUIREMENTS AND GEOMETRIC SPACING CRITERIA WITH THE EQUIPMENT SUPPLIER AND THE MANUFACTURERS PLANNING GUIDE.



**2X FRAMING ELEVATION**  
S100 / SCALE: 3/4" = 1'-0"



**BAYSTATE MEDICAL CENTER CT-2 & X-RAY 2 RENOVATIONS**

FRANKLIN MEDICAL CENTER  
GROUND FLOOR MAIN HOSPITAL  
164 HIGH STREET  
GREENFIELD MA, 01301

Project Number 02164.000	Scale
Date December 8, 2011	Issue BID SET

Title  
**CT SCAN/X-RAY PLANS AND DETAILS**

**S100**