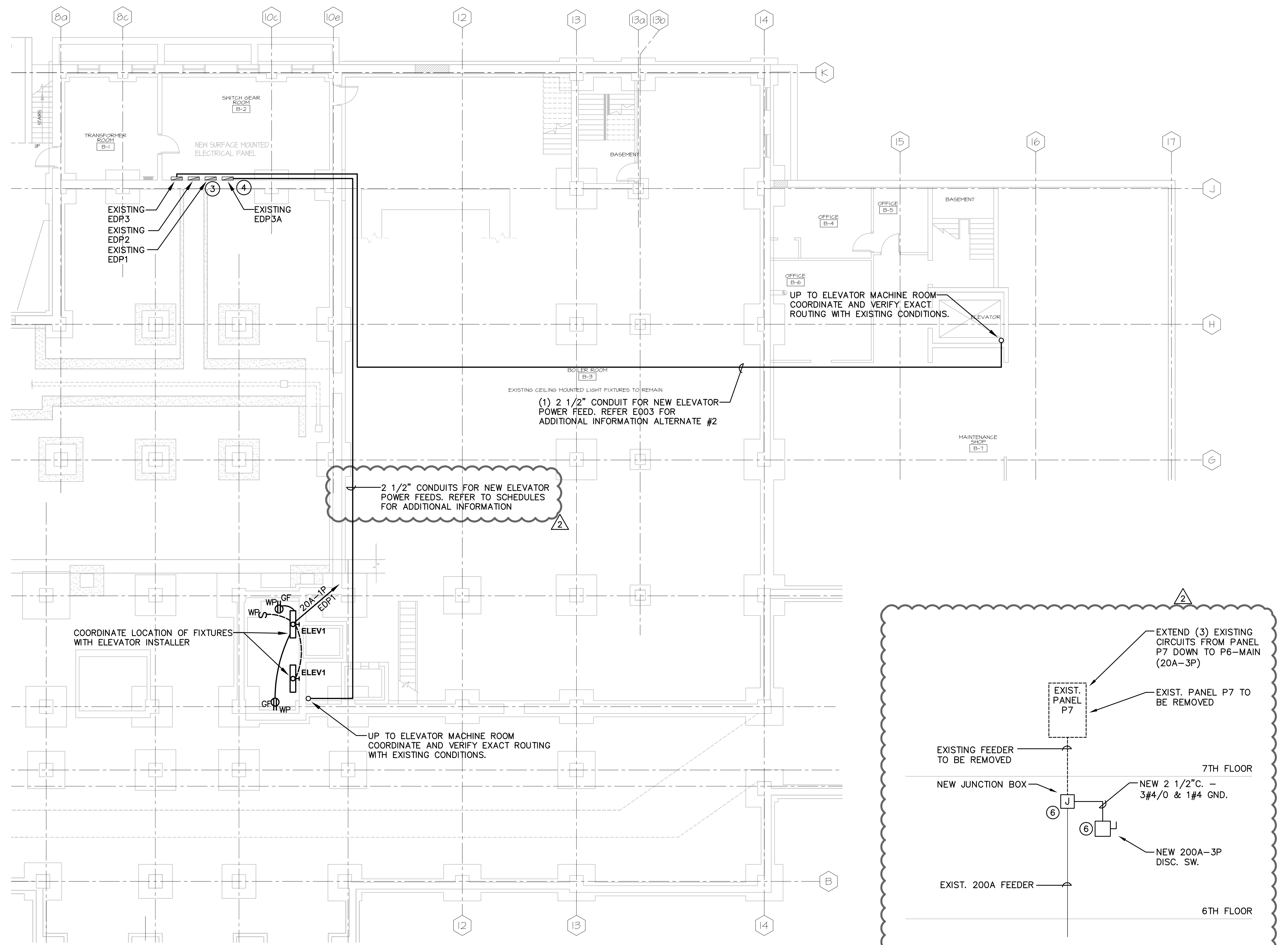


ELEVATOR SCHEDULE - BASE BID							
GENERAL NOTES:							
1. SEE ELEVATOR DETAILS.							
2. FUSES SIZED PER ELEVATOR MANUFACTURER'S RECOMMENDATIONS.							
3. PROVIDE BRANCH CIRCUIT FROM ELEVATOR SHUNT TRIP SWITCH TO ELEVATOR CONTROLLER, SAME SIZE AS CONTROLLER BRANCH CIRCUIT SIZE LISTED BELOW.							
4. TERMINATE EACH 20 AMP HOMERUN IN A 30 AMP SAFETY SWITCH LOCATED IN THE ELEVATOR MACHINE ROOM.							
5. PROVIDE A LOCKING CLIP ON EACH BRANCH CIRCUIT BREAKER.							
ITEM #	HP	FLA	VOLTS	HYDRAULIC/ TRACTION	SHUNT TRIP SWITCH SIZE	CONTROLLER HOMERUN	
ELEV-1	30	88	208		200A	200A-3P EDP3A	
ELEV-2	30	88	208		200A	200A-3P P7	
ITEM #	ELEVATOR SHAFT LIGHTING & POWER HOMERUN			ELEVATOR CAB LIGHTING & POWER HOMERUN			NOTES
ELEV-1	20A-1P P6-MAIN			20A-1P P6-MAIN			
ELEV-2	20A-1P P6-MAIN			20A-1P P6-MAIN			

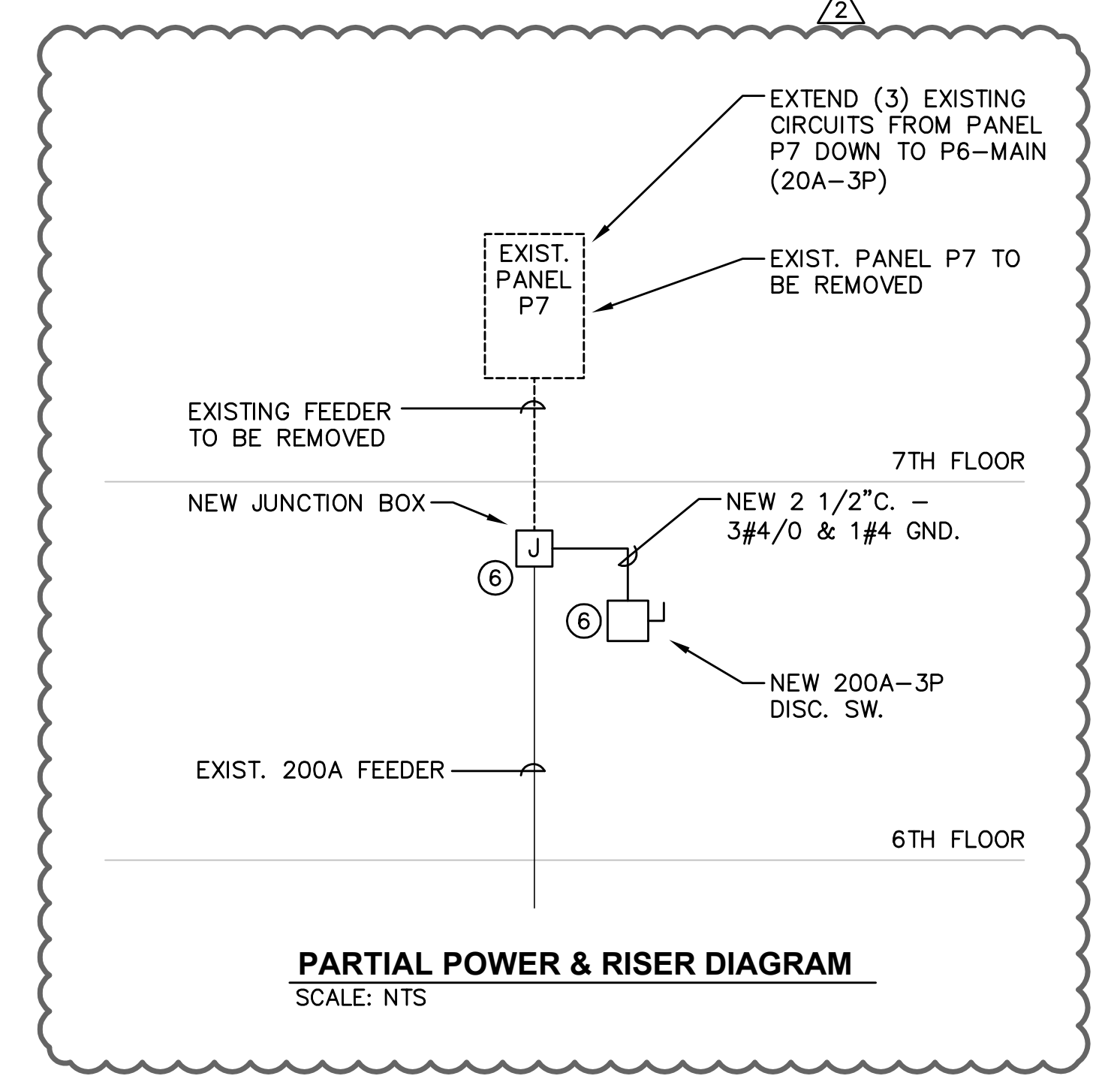
LUMINAIRE SCHEDULE - BASE BID					
NOTES:					
1. BIDS SHALL BE BASED ON THE LUMINAIRE SCHEDULE BELOW AND THE SPECIFICATIONS. REFER TO THE ELECTRICAL SPECIFICATIONS FOR ADDITIONAL GENERAL REQUIREMENTS.					
TYPE	MANUFACTURER	FIXTURE DESCRIPTION	VOLTS	LAMPS	
ELEV1	METALUX VT2 SERIES OR FOLLOWING EQUIVALENT LITHONIA DMS SERIES COLUMBIA LU SERIES	THREE-LAMP ENCLOSED 4' FLUORESCENT INDUSTRIAL; FIBERGLASS REINFORCED POLYESTER HOUSING; UL LISTED FOR WET LOCATION; (3) FLUORESCENT LAMPS; UV-RESISTANT DEEP HIGH-IMPACT ACRYLIC LENS (1) LOW TEMPERATURE BALLAST;	120V	(2) 32 W T8 LAMPS	
ELEV2	SURE-LITES CC SERIES OR FOLLOWING EQUIVALENT LITHONIA 6ELM2 SERIES DUAL LITE LM SERIES	EMERGENCY LIGHTING UNIT; IMPACT RESISTANT HOUSING; ACRYLIC PRISMATIC LENS; (2) TUNGSTEN HALOGEN LAMPS; WHITE FINISH; SEALED NICKEL CADMIUM BATTERY; INTEGRAL TEST SWITCH; CHARGER; LOW VOLTAGE DISCONNECT; INTEGRAL SELF-DIAGNOSTIC TEST FEATURE;	120V	BY MFG.	

AIR CONDITIONING UNIT SCHEDULE					
TAG	VOLTS/ PHASE	HOMERUN	BRANCH CIRCUIT SIZE	SW/FUSE SIZE	REMARKS
ACU-1	208/1	20A-2P P6-MAIN	3/4"C. - 3#12 & 1#12 GND.	30/20	ELEVATOR MACHINE ROOM, P1, P2, P3
ACU-2	208/1		3/4"C. - 3#12 & 1#12 GND.	30/20	ELEVATOR MACHINE ROOM, P1, P2, P3

AIR COOLED CONDENSING UNIT SCHEDULE - SMALL SPLIT SYSTEM					
TAG	VOLTS/ PHASE	HOMERUN	BRANCH CIRCUIT SIZE	SW/FUSE SIZE	REMARKS
CU-1	208/1	SAME CIRCUIT AS ACU-1	3/4"C. - 3#12 & 1#12 GND.	30/20	FEED FROM ACU-1 CIRCUIT
CU-2	208/1	SAME CIRCUIT AS ACU-2	3/4"C. - 3#12 & 1#12 GND.	30/20	FEED FROM ACU-2 CIRCUIT



SUB-BASEMENT FLOOR ELECTRICAL PART PLAN
SCALE: 1/8"=1'-0"



PARTIAL POWER & RISER DIAGRAM
SCALE: NTS

Key Plan

Seal

Soldiers' Home in Holyoke
Elevator Upgrade

- DRAWING NOTES**
- NEW 200A-3P FUSED DISCONNECT SWITCH FOR NEW ELEVATOR POWER FEED. COORDINATE FUSE SIZE WITH MANUFACTURER OF ELEVATOR.
 - FURNISH AND INSTALL NEW (10) 20A-1P CIRCUIT BREAKERS IN PANEL P6 MAIN FOR NEW ELEVATOR SUPPORT CIRCUITS AND (2) 20A-2P CIRCUIT BREAKERS FOR NEW ACU POWER CIRCUITS. NEW CIRCUIT BREAKERS SHALL BE COMPATIBLE WITH EXISTING PANELBOARD. REMOVE SPARE CIRCUIT BREAKERS AS NECESSARY TO MAKE ROOM FOR NEW CIRCUIT BREAKERS.
 - FURNISH AND INSTALL NEW (1) 20A-1P CIRCUIT BREAKER IN PANEL EDP1 FOR NEW POWER CIRCUIT. NEW CIRCUIT BREAKER SHALL BE COMPATIBLE WITH EXISTING PANELBOARD.
 - FURNISH AND INSTALL NEW (1) 200A-3P CIRCUIT BREAKERS IN PANEL EDP3A FOR ELEVATOR POWER FEED. BREAKERS SHALL BE COMPATIBLE WITH EXISTING PANELBOARD.
 - EXISTING DISCONNECT SWITCHES SERVING ELEVATOR #1 AND #2 TO BE DISCONNECTED AND REMOVED WITH ALL ASSOCIATED RACEWAYS AND WIRING BACK TO SOURCE PANEL. CIRCUIT BREAKERS IN SOURCE PANEL TO REMAIN AS SPARES.
 - INTERCEPT FEEDER TO EXISTING PANEL P7. PROVIDE JB SPLICE CONDUCTORS & EXTEND TO NEW 200A DISC. SW FOR ELEVATOR.

Project Number 2026.002	Scale 1/8"=1'-0"
Date 04/20/11	Issue Bid Set
05/06/11	Addendum #2

Title
**Main Building
Sub-Basement Floor
Mechanical Plan**

E002

NOTE:
REFER TO E001 DRAWING
FOR ADDITIONAL INFORMATION.