

THE GENERAL CONTRACTOR IS RESPONSIBLE TO VERIFY ALL DIMENSIONS ON SITE AND CONFIRM SUCH DIMENSIONS AGAINST ACTUAL SITE CONDITIONS. THE GENERAL CONTRACTOR SHALL COORDINATE ALL WORK AND RELATED TRADES, AND SHALL NOTIFY THE ARCHITECT OF ANY INTERFERENCE OF MECHANICAL, ELECTRICAL, OR PLUMBING WORK WITH THE ARCHITECTURAL WORK AND OF ANY CONFLICTS OR DISCREPANCIES IN DIMENSIONS AGAINST ON SITE CONDITIONS PRIOR TO PROCEEDING WITH THE WORK OR PROCUREMENT OF MATERIALS.

Project:



1 Federal Street
Springfield, MA 01115

Project No: 044.92

Drawn by: TL
Checked by: KD
Approved by: TW

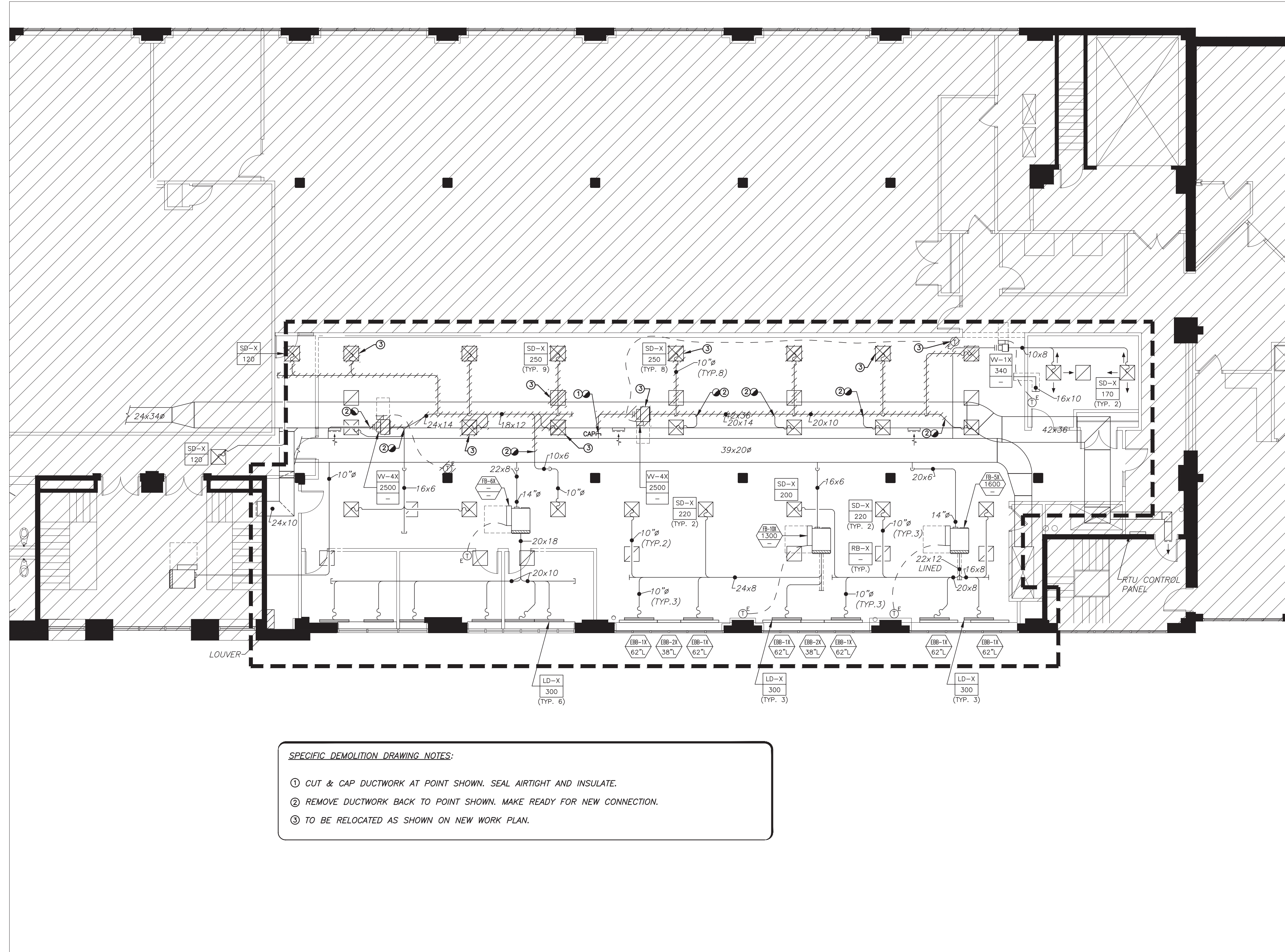
Client Approval: _____ Date: _____

Issue Date: 11/03/2011

No.	Date	Revision

Scale: 1/8" = 1'-0"

Drawing:
HVAC
FOURTH FLOOR
DEMOLITION
DUCTWORK
PLAN
No. HD-1.04



SPECIFIC DEMOLITION DRAWING NOTES:

- ① CUT & CAP DUCTWORK AT POINT SHOWN. SEAL AIRTIGHT AND INSULATE.
- ② REMOVE DUCTWORK BACK TO POINT SHOWN. MAKE READY FOR NEW CONNECTION.
- ③ TO BE RELOCATED AS SHOWN ON NEW WORK PLAN.

