

SIGN SCHEDULE							
MARK No.	QUANT.	LOCATION	TEXT	SIZE	MATERIAL	MOUNTING TYPE	DETAIL
SG-1	1	VALVE ROOM DOOR	WATER VALVE & METER ROOM	1" ENGRAVED LETTERS	MOLDED ACRYLIC PLASTIC	SELF-ADHESIVE BACKING	3/A-301
SG-2	2	SNOW MELTER #1 TANK & EQUIP SKID	EPS No. 1	3" HIGH LETTERS	3M SCOTCHCAL DIE-CUT VINYL	SELF-ADHESIVE BACKING	N/A
SG-3	2	SNOW MELTER #2 TANK & EQUIP SKID	EPS No. 2	3" LETTERS	3M SCOTCHCAL DIE-CUT VINYL	SELF-ADHESIVE BACKING	N/A
SG-4	6	LEVEL 2 AS SHOWN	SNOW EMERGENCY - NO PARKING DURING SNOW EMERGENCY - TOW ZONE	18" X 24"	.08 ALUMINUM	OVERHEAD 3/A-306	1/A-306
SG-5	5	LEVEL 3 AS SHOWN	SNOW EMERGENCY - NO PARKING DURING SNOW EMERGENCY - TOW ZONE	18" X 24"	.08 ALUMINUM	WALL/SPANDREL 1/A-306	1/A-306
SG-6	6	LEVEL 3 AS SHOWN	SNOW EMERGENCY - NO PARKING DURING SNOW EMERGENCY - TOW ZONE	18" X 24"	.08 ALUMINUM	TBD TBD	1/A-306

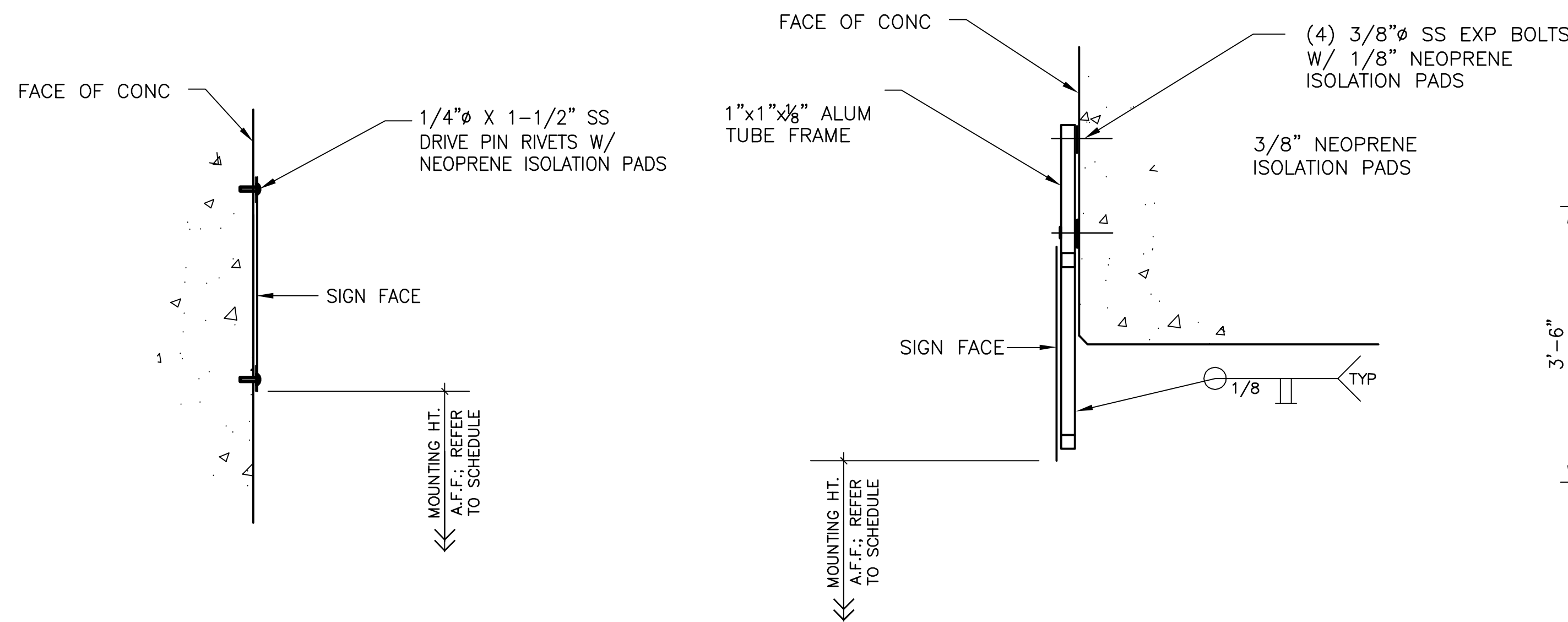


TOP & BOT BAND COLOR: RED
 BACKGROUND COLOR: 70% BLACK
 TEXT COLOR: WHITE
 VEHICULAR IMAGE COLOR: YELLOW

SIGNAGE SPECIFICATIONS & NOTES:

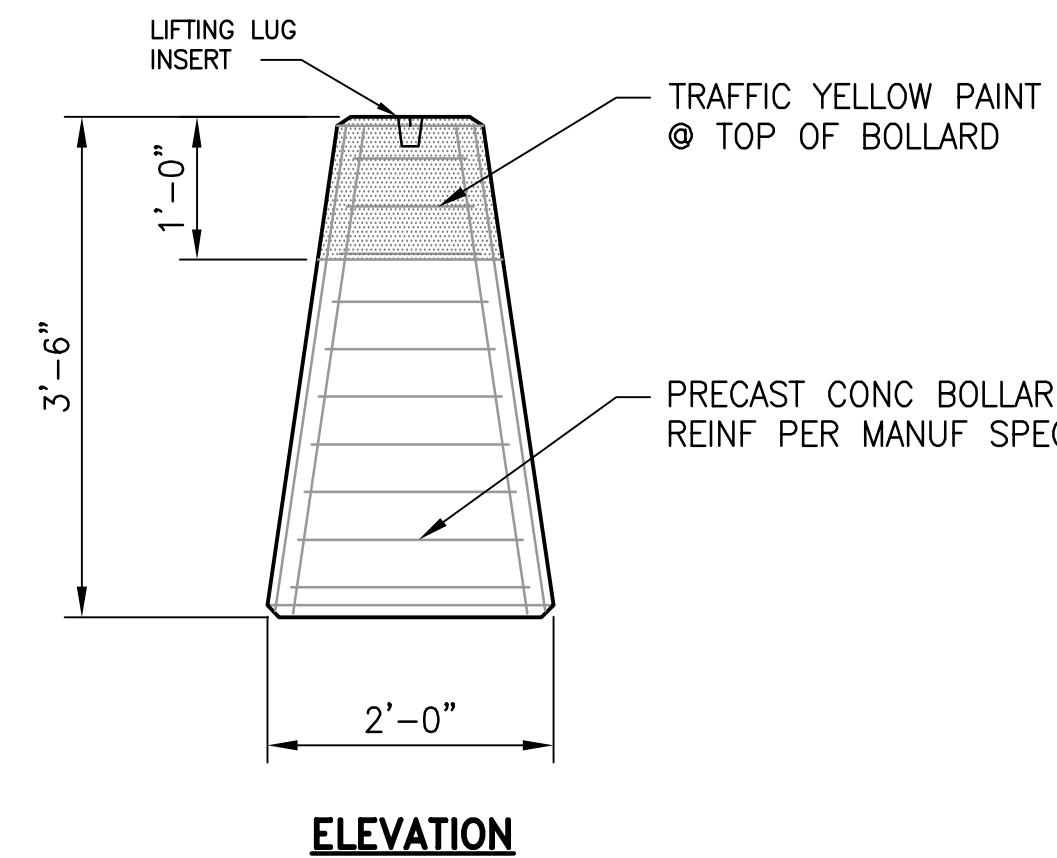
- REFER TO MASSPORT "GRAPHIC DESIGN STANDARDS - COLOR" FOR ADDITIONAL SIGNAGE AND GRAPHICS REQUIREMENTS.
- ALL RED COLOR REFERENCES TO BE 3M REFLECTIVE SCOTCHLITE #4092 RED.
- ALL YELLOW COLOR REFERENCES TO BE 3M REFLECTIVE SCOTCHLITE #4091 YELLOW.
- ALL 70% BLACK COLOR REFERENCES TO BE ORACAL OPAQUE #951-721 SLATE GRAY.
- ALL BLACK BACKGROUND COLOR REFERENCES TO BE 3M SCOTCHCAL OPAQUE #7725-12 BLACK.
- ENGRAVED SIGNS, TYPE SG-1, SHALL BE FABRICATED FROM HIGH PRESSURE MELAMINE PLASTIC LAMINATE.
- VINYL DIE-CUT OR COMPUTER CUT SIGNS, TYPE SG-2 AND SG-3, SHALL BE PRESSURE APPLIED 3M SCOTCHCAL NON-REFLECTIVE #3655 BLACK.
- ALUMINUM SIGNS TYPE SG-4, SG-5, AND SG-6 SHALL BE 0.080 INCH SHEET ALUMINUM 3003-H14 OR 6061-T6 ALLOY.

1 SIGN DETAIL
 A-306 SCALE: 3/4" = 1'-0"
 REF: A-306

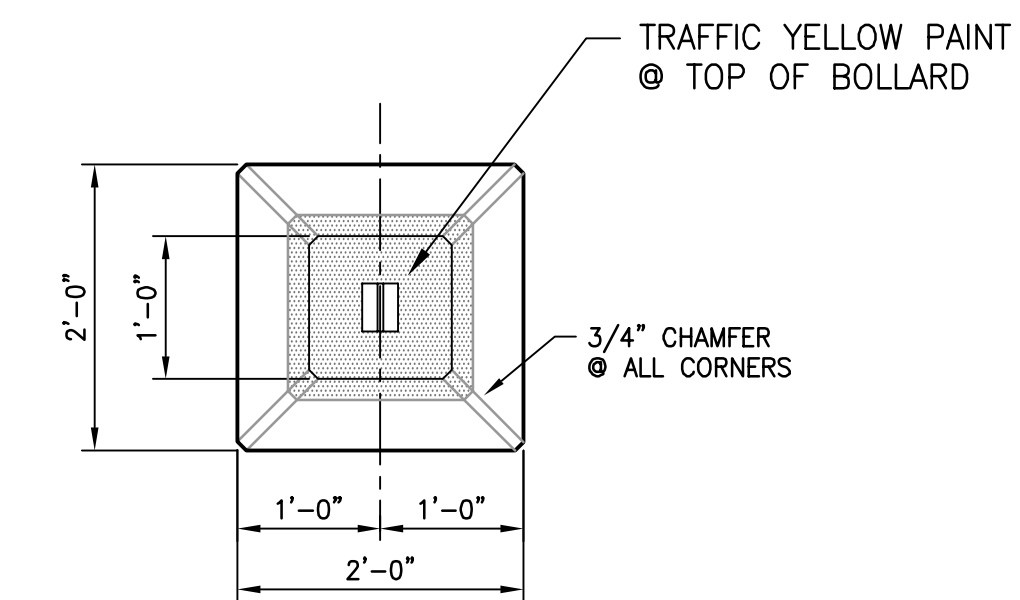


2 SIGN MOUNTING DETAIL
 A-306 SCALE: 3/4" = 1'-0"
 REF: A-306

3 SIGN MOUNTING DETAIL
 A-306 SCALE: 3/4" = 1'-0"
 REF: A-306



ELEVATION



PLAN

4 CONCRETE BOLLARD
 A-306 SCALE: 3/4" = 1'-0"
 REF: A-204, A-205, A-206

REV. NO.	DATE	DESCRIPTION	MADE BY	CHK. BY	APP. BY
01/12/12		ISSUE FOR BID		JPC	CHB
MASSACHUSETTS PORT AUTHORITY BOSTON, MASSACHUSETTS					
BOSTON LOGAN INTERNATIONAL AIRPORT EAST BOSTON, MASSACHUSETTS					
ECONOMY PARKING STRUCTURE SNOW MELTING FACILITIES, BUILDING 10 237 PRESCOTT STREET, LOGAN AIRPORT, EAST BOSTON, MA 02128					
ARCHITECTURAL SIGNAGE & TYPICAL DETAILS					

CONSULTANT: PARSONS BRINCKERHOFF 75 ARLINGTON STREET BOSTON, MA 02116					
DSGN. BY: JKL	CHKD. BY: JPC	LOC. CODE:			
DWN. BY: STAFF					
SCALE: AS NOTED	APPV. BY: CHB	DATE: 01/12/2012	DWG. NO.:		
SHEET OF		MPA PROJ. NO. L1175-C1		A-306	