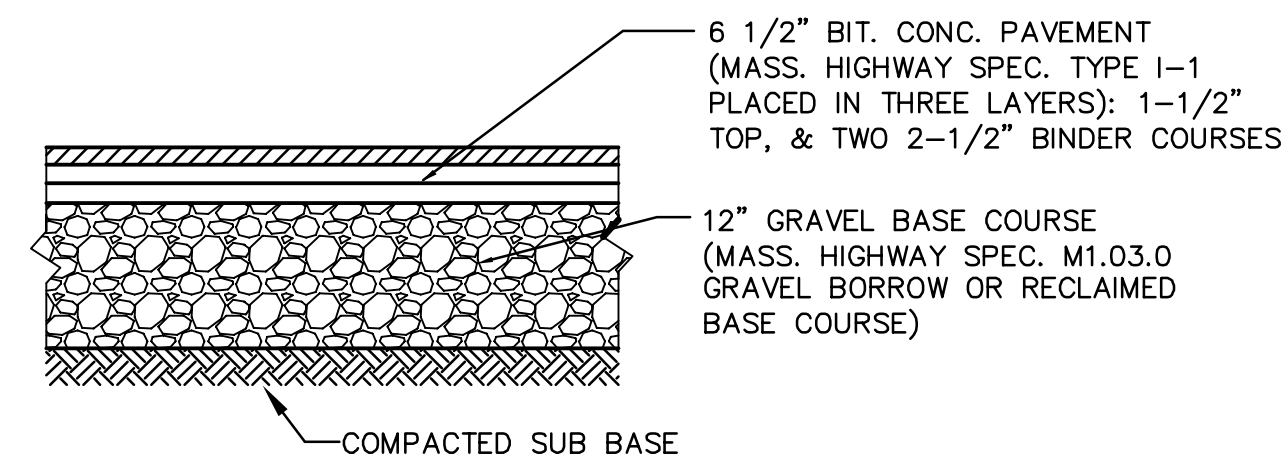


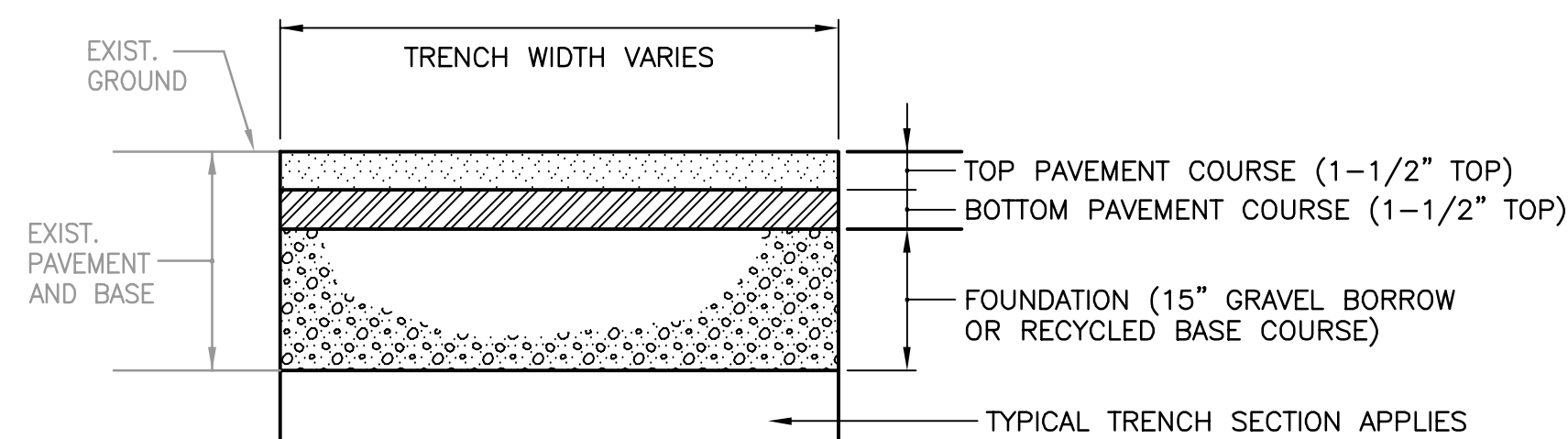
MED. DUTY PAVEMENT RESTORATION SECTION
NOT TO SCALE

- NOTES:
- 1.) FOR GRAVEL BASE COURSE REFER TO EXISTING PAVEMENT RECLAMATION BASE COURSE MODIFICATION SECTIONS, WHERE APPLICABLE.
 - 2.) ALL PAVEMENT EDGES WITHIN THE E.P.S. SHALL INFRARED TREATED.
 - 3.) ALL EXTERIOR PAVEMENT EDGES SHALL BITUMEN BE SEALED.

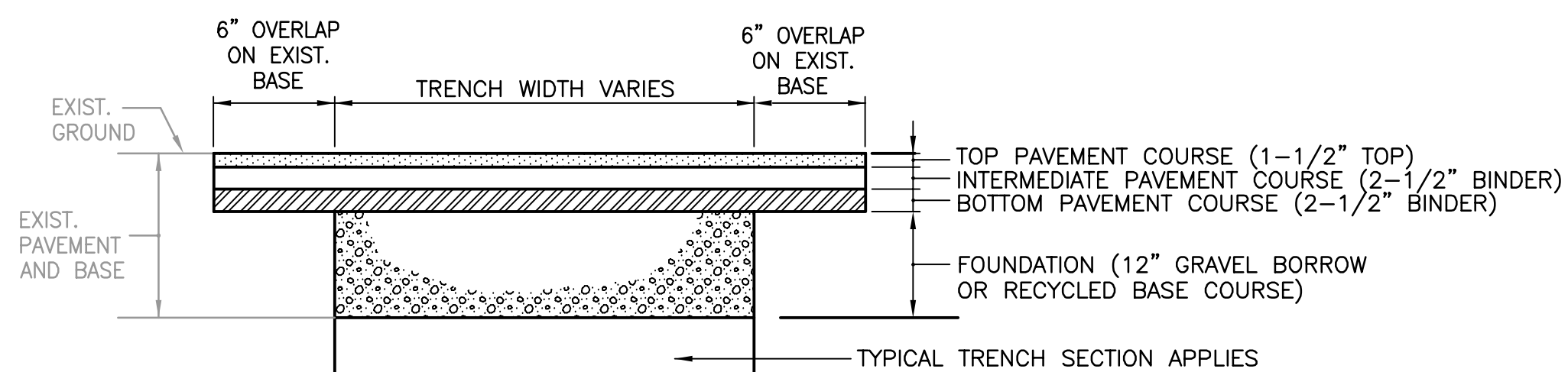


HEAVY DUTY PAVEMENT RESTORATION SECTION
NOT TO SCALE

- NOTES:
- 1.) FOR GRAVEL BASE COURSE REFER TO EXISTING PAVEMENT RECLAMATION BASE COURSE MODIFICATION SECTIONS, WHERE APPLICABLE.
 - 2.) ALL PAVEMENT EDGES WITHIN THE E.P.S. SHALL INFRARED TREATED.
 - 3.) ALL EXTERIOR PAVEMENT EDGES SHALL BITUMEN BE SEALED.

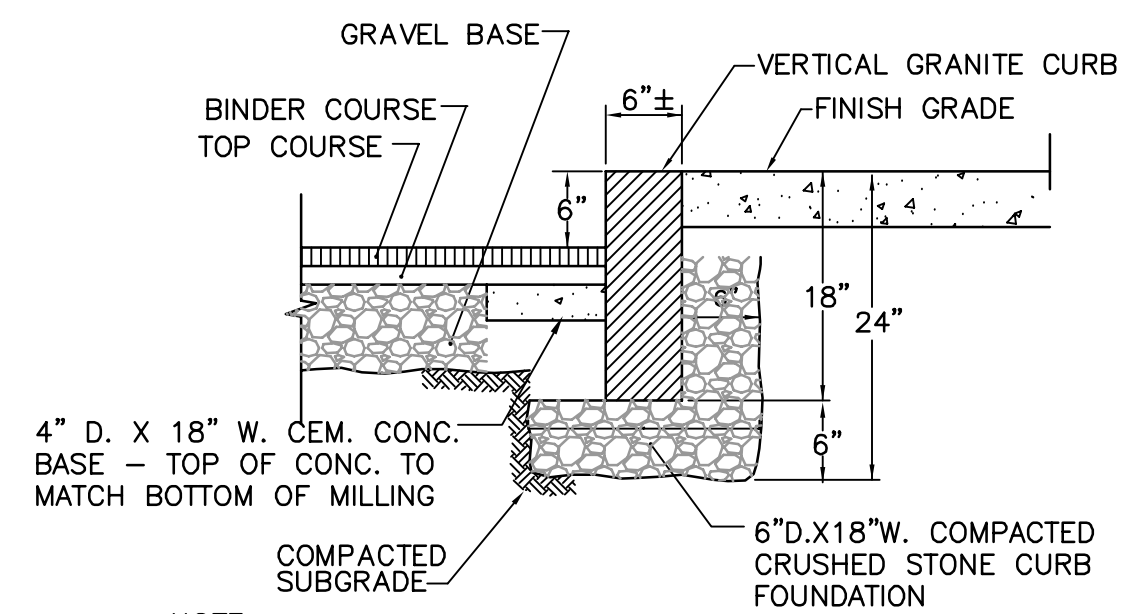


TEMPORARY TRENCH PAVEMENT
NOT TO SCALE



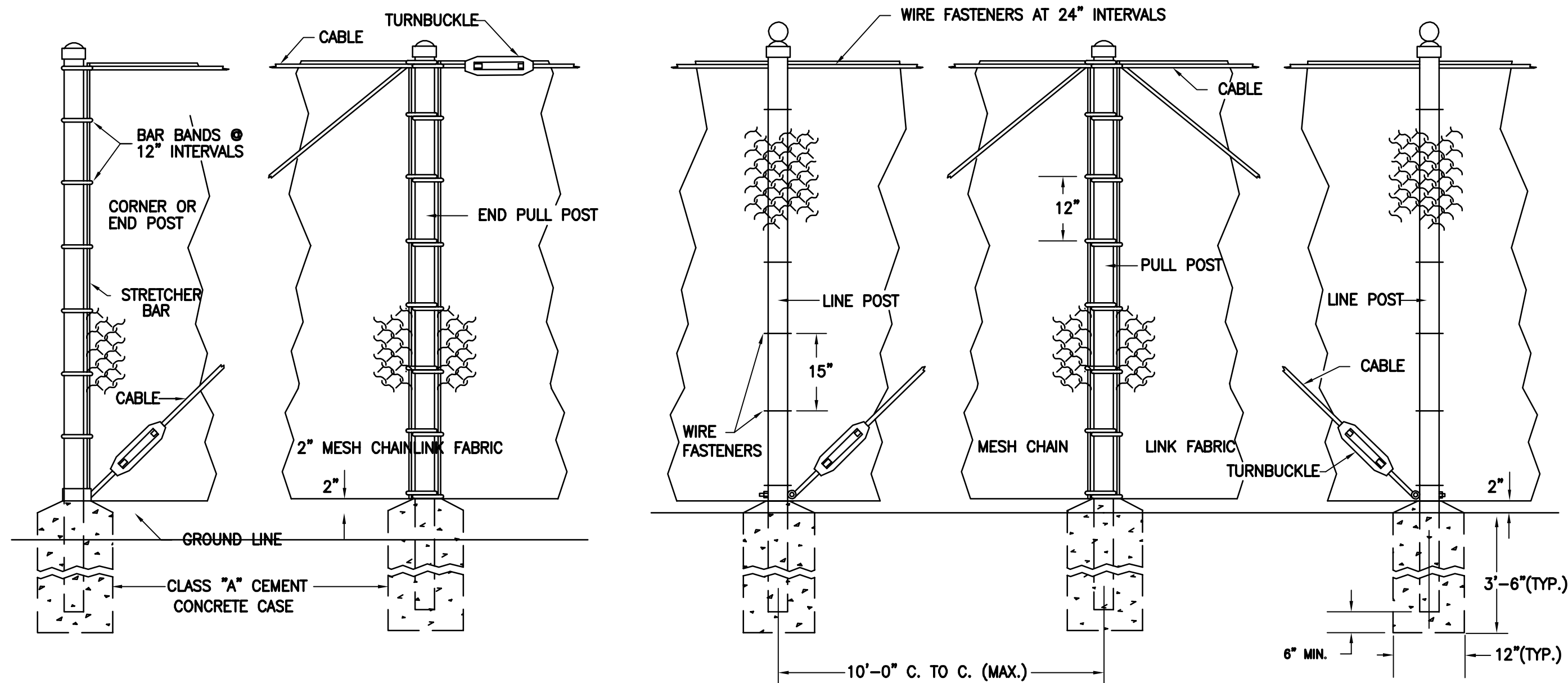
PERMANENT TRENCH PAVEMENT
NOT TO SCALE

- NOTES:
- 1.) ALL PAVEMENT EDGES WITHIN THE E.P.S. SHALL INFRARED TREATED.
 - 2.) ALL EXTERIOR PAVEMENT EDGES SHALL BE BITUMEN SEALED.



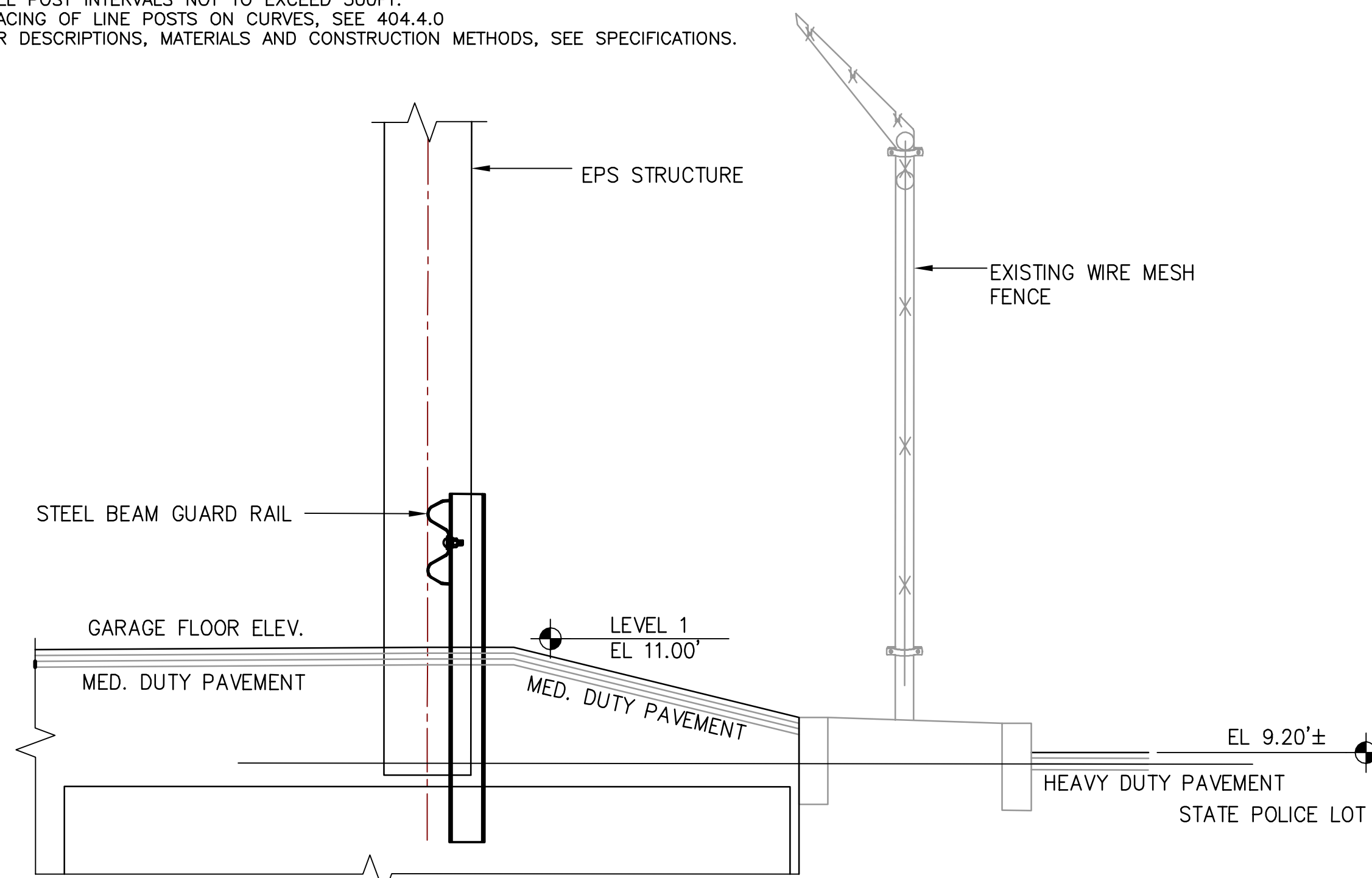
- NOTE:
1. COMPRESSIBLE EXPANSION JOINT MATERIAL SHALL BE USED ADJACENT TO BUILDINGS AND WALLS.

VERTICAL GRANITE CURB
NOT TO SCALE

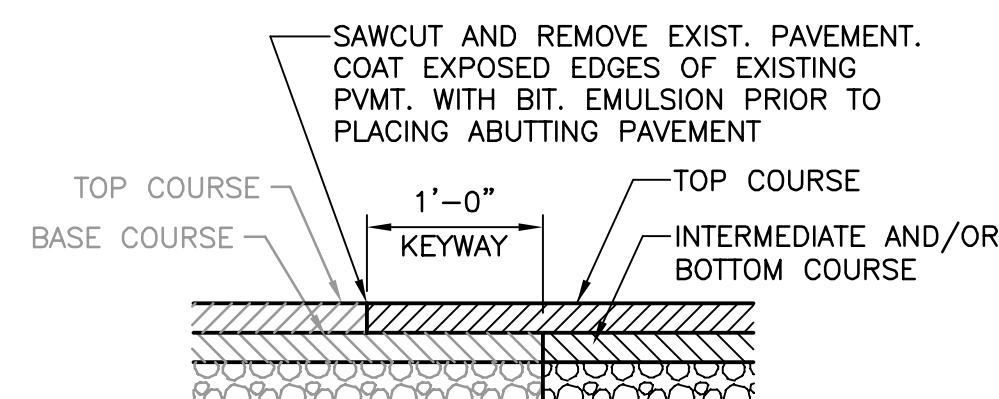


CHAIN LINK FENCE WITH TOP TENSION CABLE
NOT TO SCALE

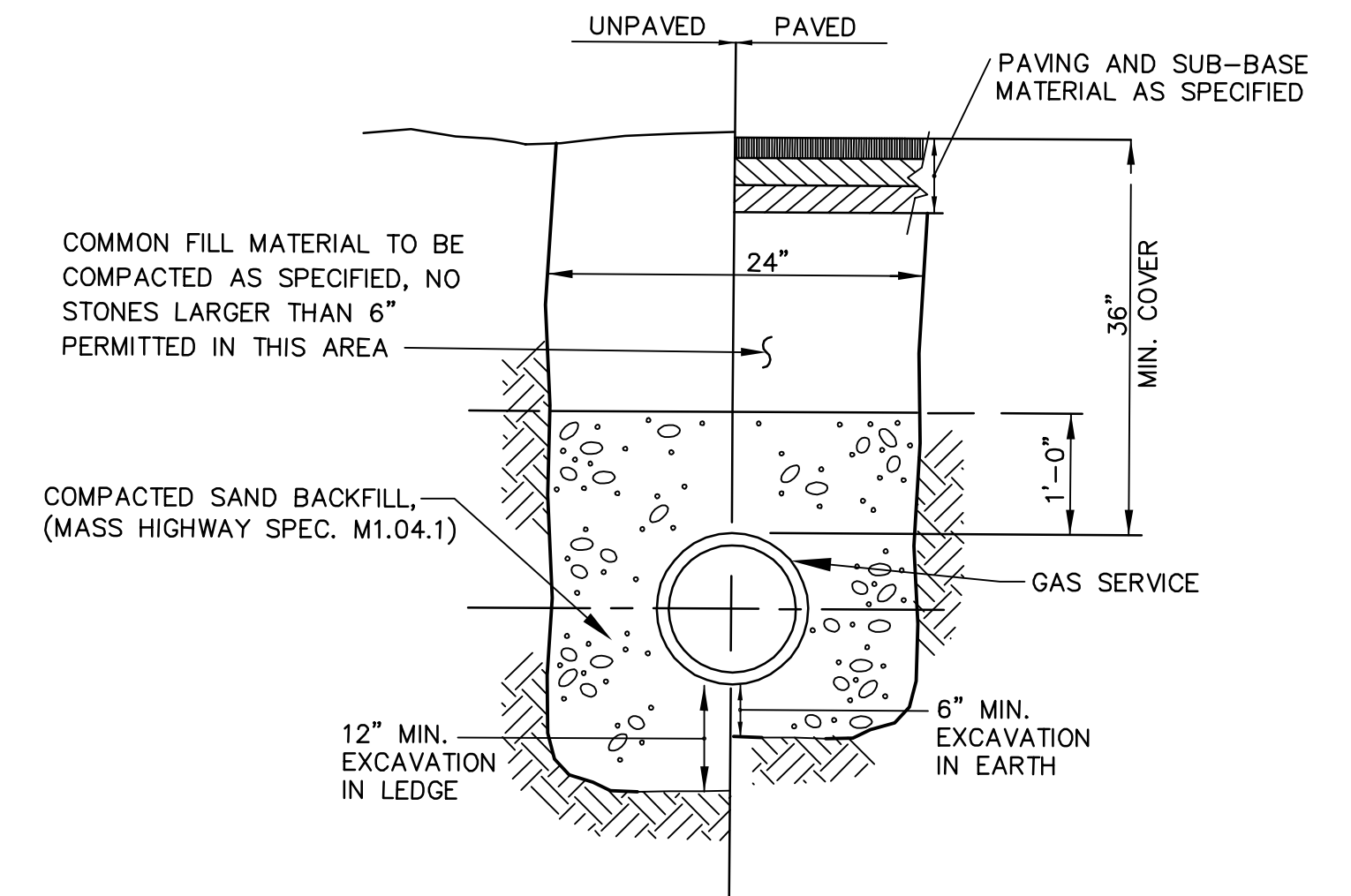
- NOTES:
1. REUSE EXISTING 8' FENCE FABRIC.
 2. POST HOLE SHALL BE EXCAVATED USING VACUUM EXCAVATION METHOD.
 3. FENCE HEIGHT (8'±) AS DETERMINED IN FIELD.
 4. GRADE OF FENCE TO BE PARALLEL WITH THE GRADE OF SIDEWALKS, CURBING, GROUND OR TOP OF WALL.
 5. FOR POST BASES AND CABLE ATTACHMENTS SEE 404.5.0
 6. PULL POST INTERVALS NOT TO EXCEED 500FT.
 7. SPACING OF LINE POSTS ON CURVES, SEE 404.4.0
 8. FOR DESCRIPTIONS, MATERIALS AND CONSTRUCTION METHODS, SEE SPECIFICATIONS.



STATE POLICE/EPS PAVEMENT SECTION DETAIL
NOT TO SCALE

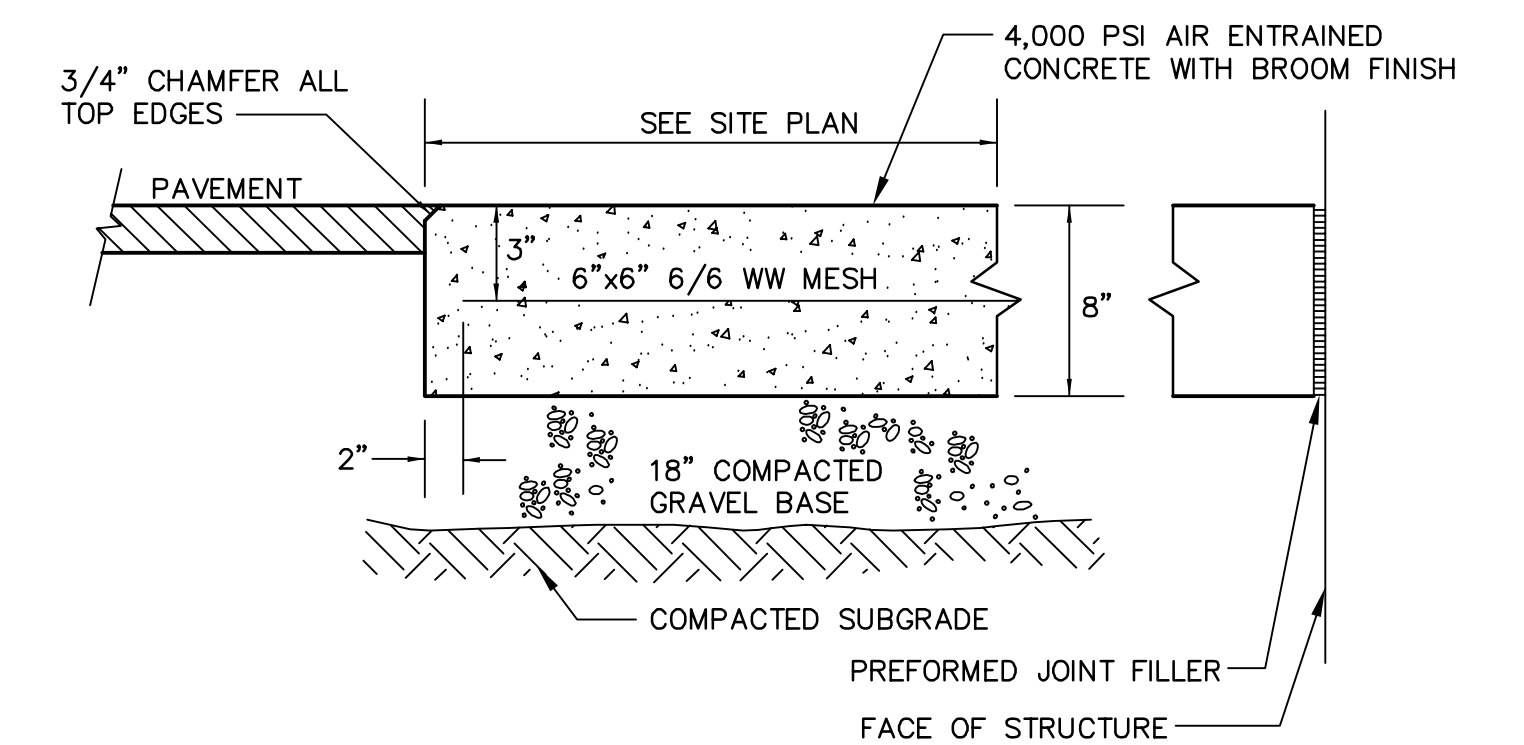


KEYWAY DETAIL FOR CONNECTION TO EXISTING PAVEMENT
NOT TO SCALE



GAS SERVICE TRENCH DETAIL
NOT TO SCALE

- NOTES:
- 1) BOTTOM OF TRENCH MUST BE SMOOTH AND LEVEL AS PRACTICAL AND FREE OF ROCKS AND OTHER ABRASIVES.
 - 2) GAS SERVICE MUST HAVE A MINIMUM SEPARATION OF 3 FEET FROM PARALLEL UTILITIES.
 - 3) MAINTAIN A MINIMUM OF 1 FOOT SEPARATION WHEN CROSSING OTHER UTILITIES.



CONCRETE PAD
NOT TO SCALE

REV. NO	DATE	DESCRIPTION	MADE BY	CHK. BY	APP. BY
	01/12/12	ISSUE FOR BID		JPC	CHB

MASSACHUSETTS PORT AUTHORITY
BOSTON, MASSACHUSETTS

BOSTON LOGAN INTERNATIONAL AIRPORT
EAST BOSTON, MASSACHUSETTS

ECONOMY PARKING STRUCTURE SNOW MELTING FACILITIES, BUILDING 10
237 PRESCOTT STREET, LOGAN AIRPORT, EAST BOSTON, MA 02128

CIVIL
DETAILS SHEET

CONSULTANT: PARSONS BRINCKERHOFF 75 ARLINGTON STREET BOSTON, MA 02116					
DSGN. BY: JF	CHKD. BY: JPC	LOC. CODE:			
DWN. BY: BJD					
SCALE: AS NOTED	APPV. BY: CHB	DATE: 01/12/2012	DWG. NO.:		
SHEET 000 OF		MPA PROJ. NO. L1175-C1		C-3	