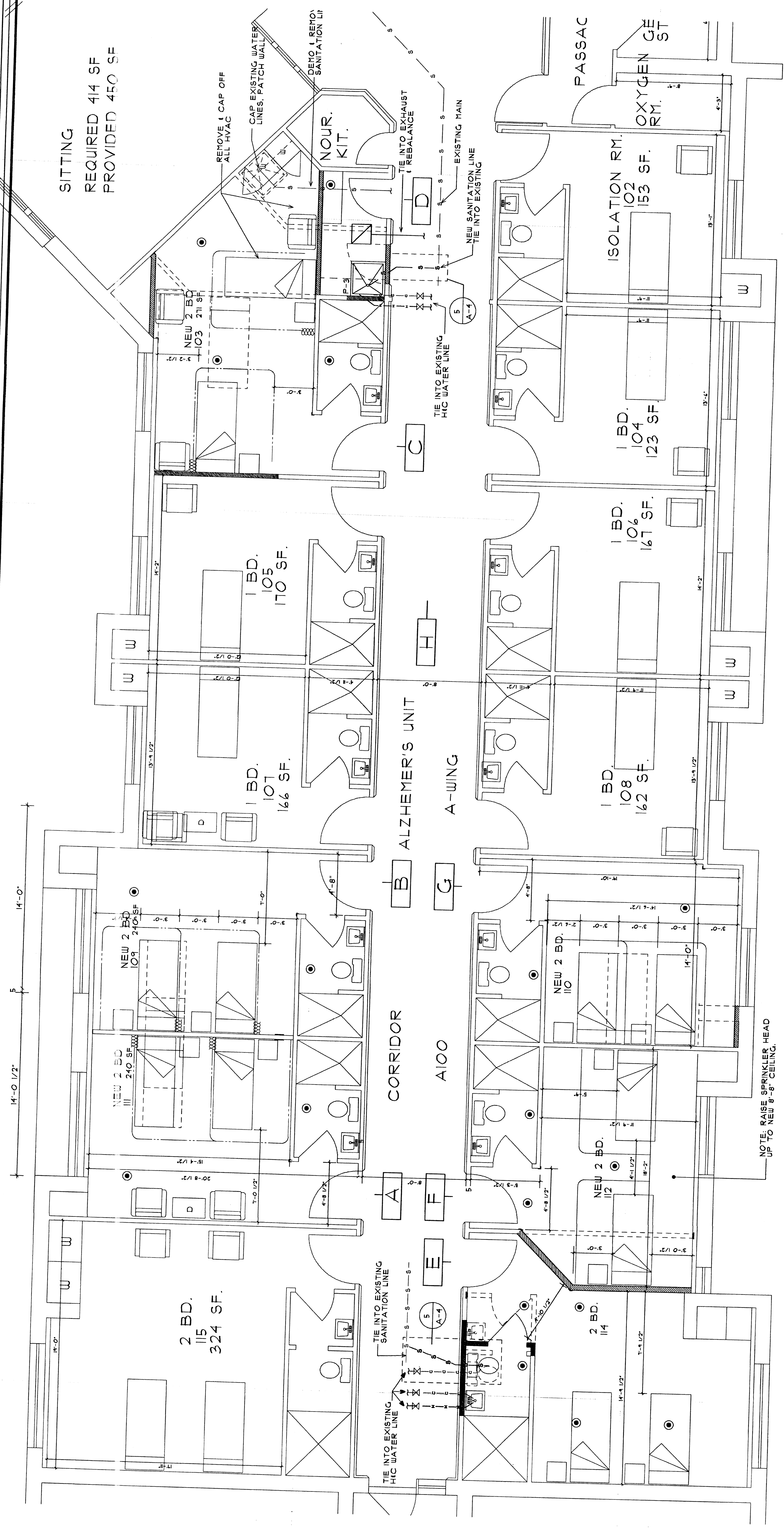


DHP-SUBMISSION 8/5/11

| LEGEND | |
|--------|--|
| P-1 | W.C. H.C. POWER ASSISTED MANUFACTURER |
| P-2 | SINK WITH CHAIR CARRIER H.C. TYP. MANUFACTURER |
| P-3 | TOP SINK 3'X3'X4" DEEP |
| □ | NEW EXHAUST |
| - S - | EXISTING SANITARY LINE |
| - S - | NEW SANITARY LINE TIE INTO EXISTING |
| - H - | HOT WATER TIE INTO EXISTING |
| - C - | COLD WATER TIE INTO EXISTING |
| ⊗ | SHUT OFF VALVE |



SITTING
REQUIRED 414 SF
PROVIDED 450 SF

NOTE: RAISE SPRINKLER HEAD UP TO NEW 8'-0" CEILING.