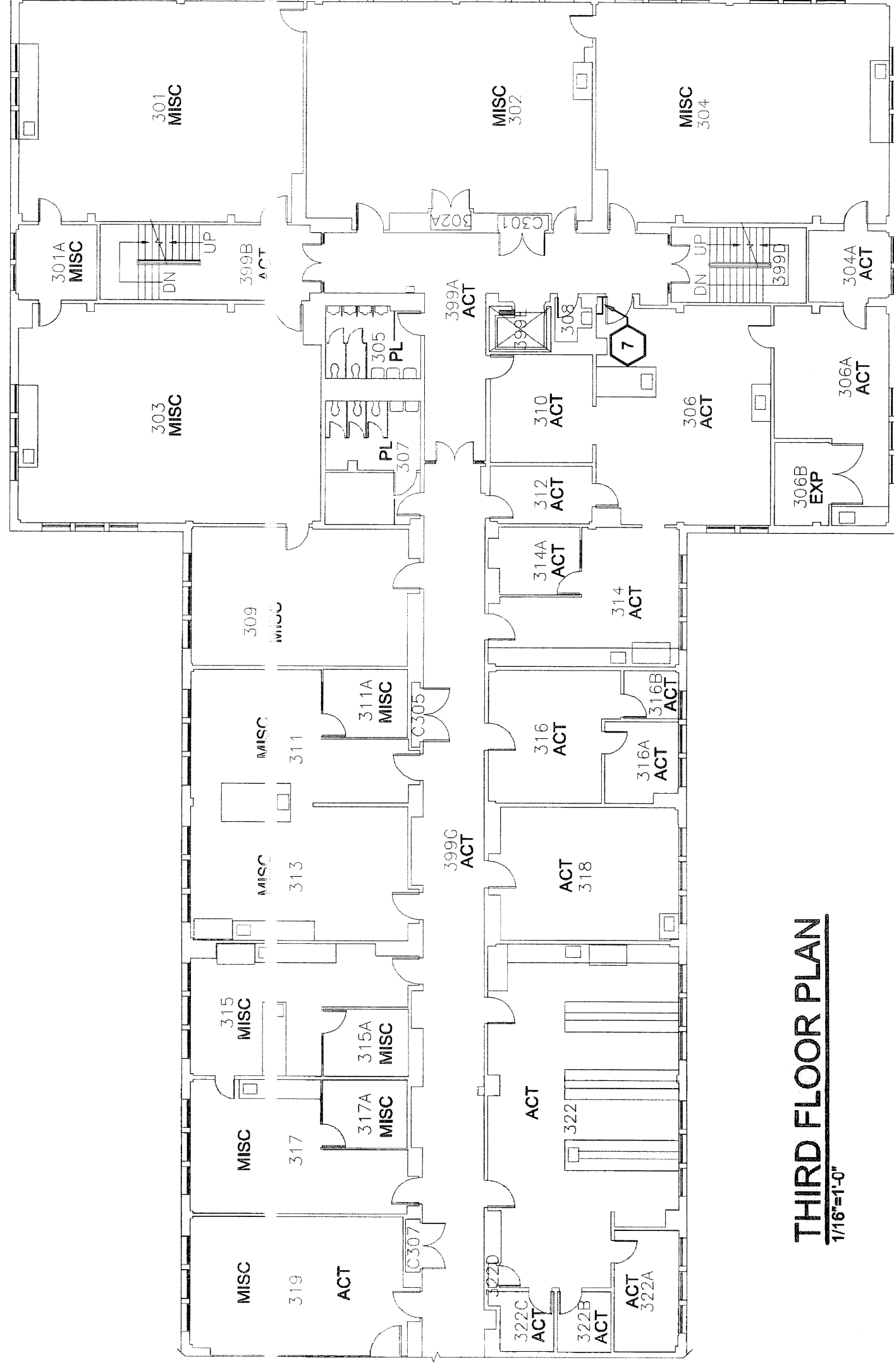


EXISTING CEILING LEGEND

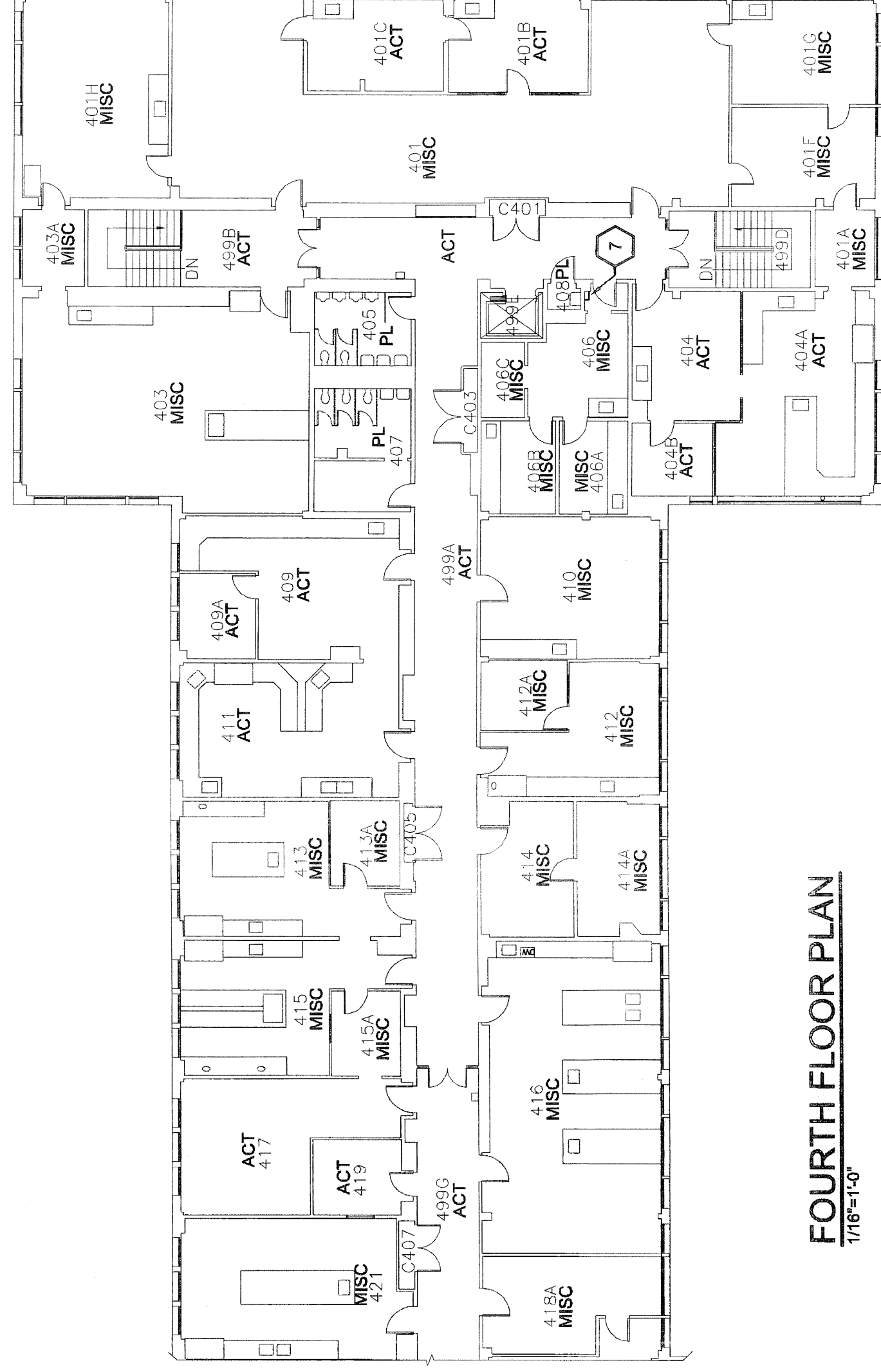
- ACT DENOTES 2' X 4' SUSPENDED ACOUSTIC CEILING TILE.
- MISC DENOTES METAL SPLINE CEILING (RADIANT PANEL), RADIANT METAL PANEL SECURED TO A GRID OF HYDRONIC PIPING WITH RES TRAINER CLIPS. A LAYER OF HYDRONIC PIPING, SEE DETAIL ON THIS SHEET.
- PL DENOTES HARD CEILING CONSISTING OF PLASTER ON METAL LATH.
- EXP DENOTES EXPOSED CONSTRUCTION.

DRAWING NOTES:

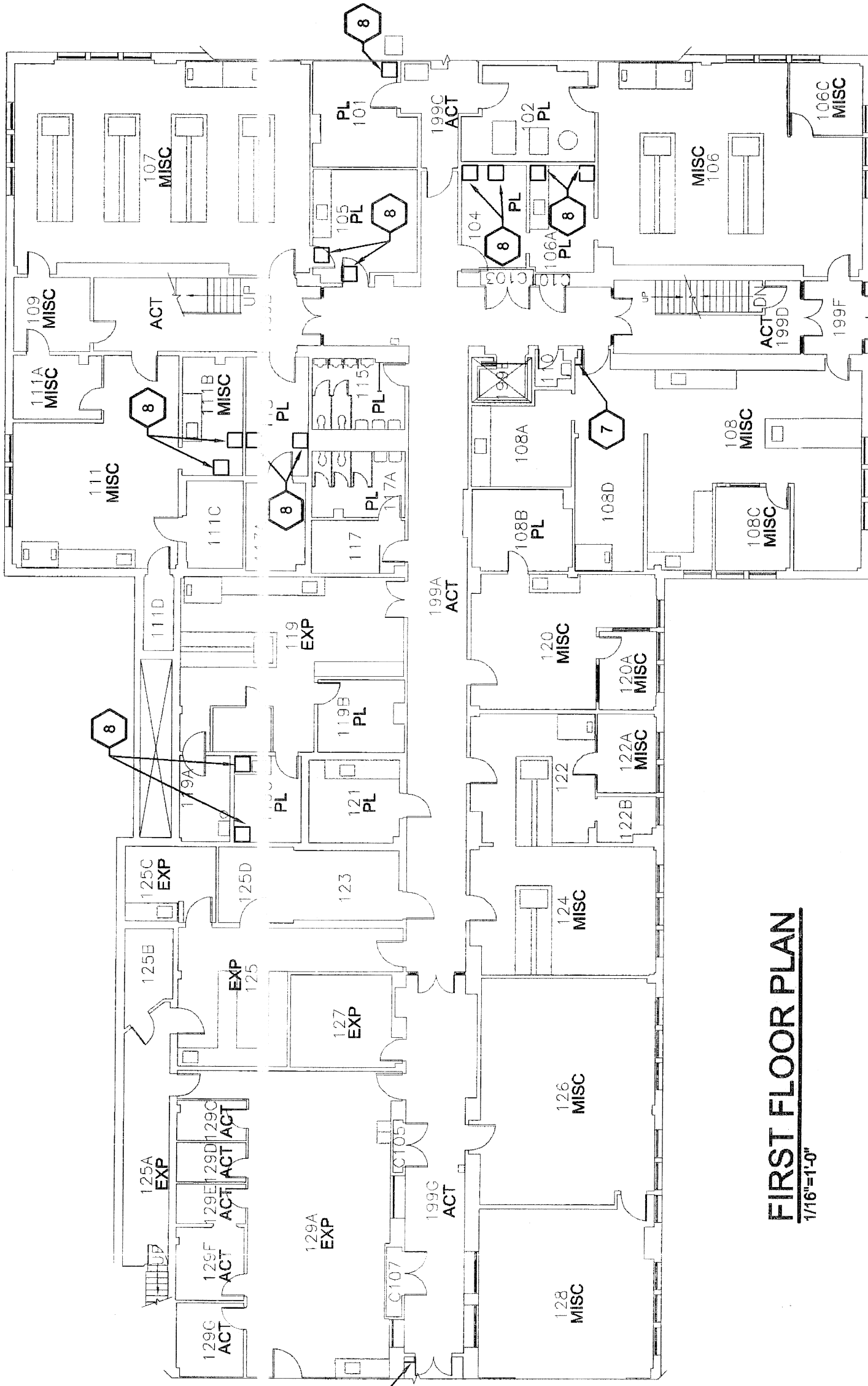
1. THE FOLLOWING NOTES APPLY ONLY TO THIS DRAWING.
2. REFER TO GENERAL NOTES ON DRAWING A-C-290-08-001 ES301-TS.
3. COORDINATE ARCHITECTURAL DRAWINGS WITH CIVIL, MECHANICAL, AND ELECTRICAL TRADE DRAWINGS.
4. CEILING PLANS ARE PROVIDED TO INDICATE EXISTING CEILING TYPES AND CONSTRUCTION THROUGHOUT THE BUILDING. GENERAL CONTRACTOR SHALL DISASSEMBLE AND REASSEMBLE CEILINGS AS NECESSARY TO FACILITATE NEW PLUMBING AND ELECTRICAL CONSTRUCTION. COORDINATE WITH PLUMBING AND ELECTRICAL DRAWINGS.
5. AT LOCATIONS WHERE PLASTER CEILING IS TO BE REMOVED, PATCH WITH NEW 5/8" TYPE GWB AND FRAMING. PAINT ENTIRE CEILING IN THESE AREAS.
6. BASEMENT LEVEL CONSISTS OF EXPOSED STRUCTURE THROUGHOUT (NOT SHOWN).
7. INSTALL METAL PIPE SHROUD - REFER TO THIS DRAWING FOR DETAIL.
8. INSTALL 24" X 24" CEILING ACCESS PANEL - PAINT TO MATCH EXISTING.



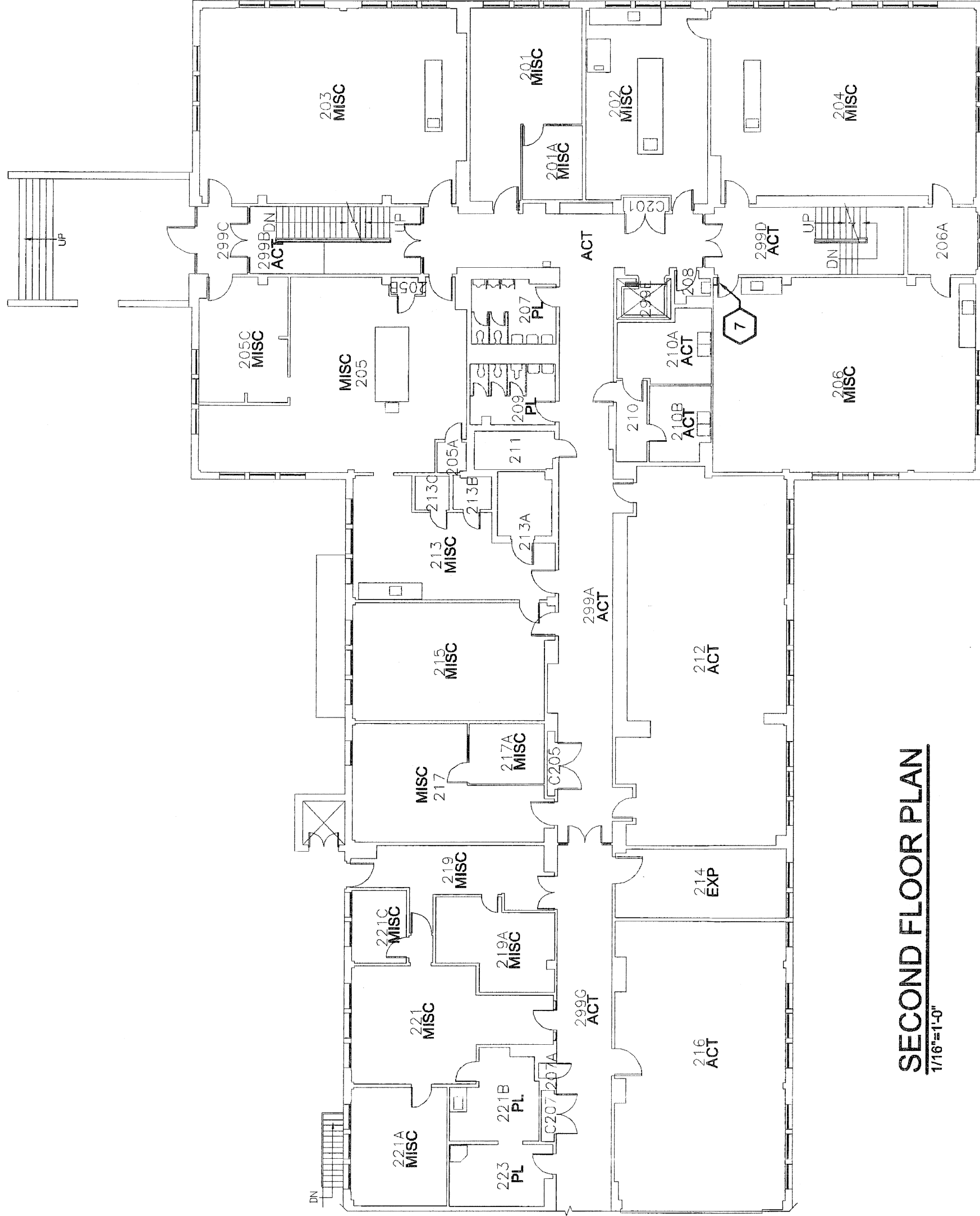
THIRD FLOOR PLAN
17/6"=1'-0"



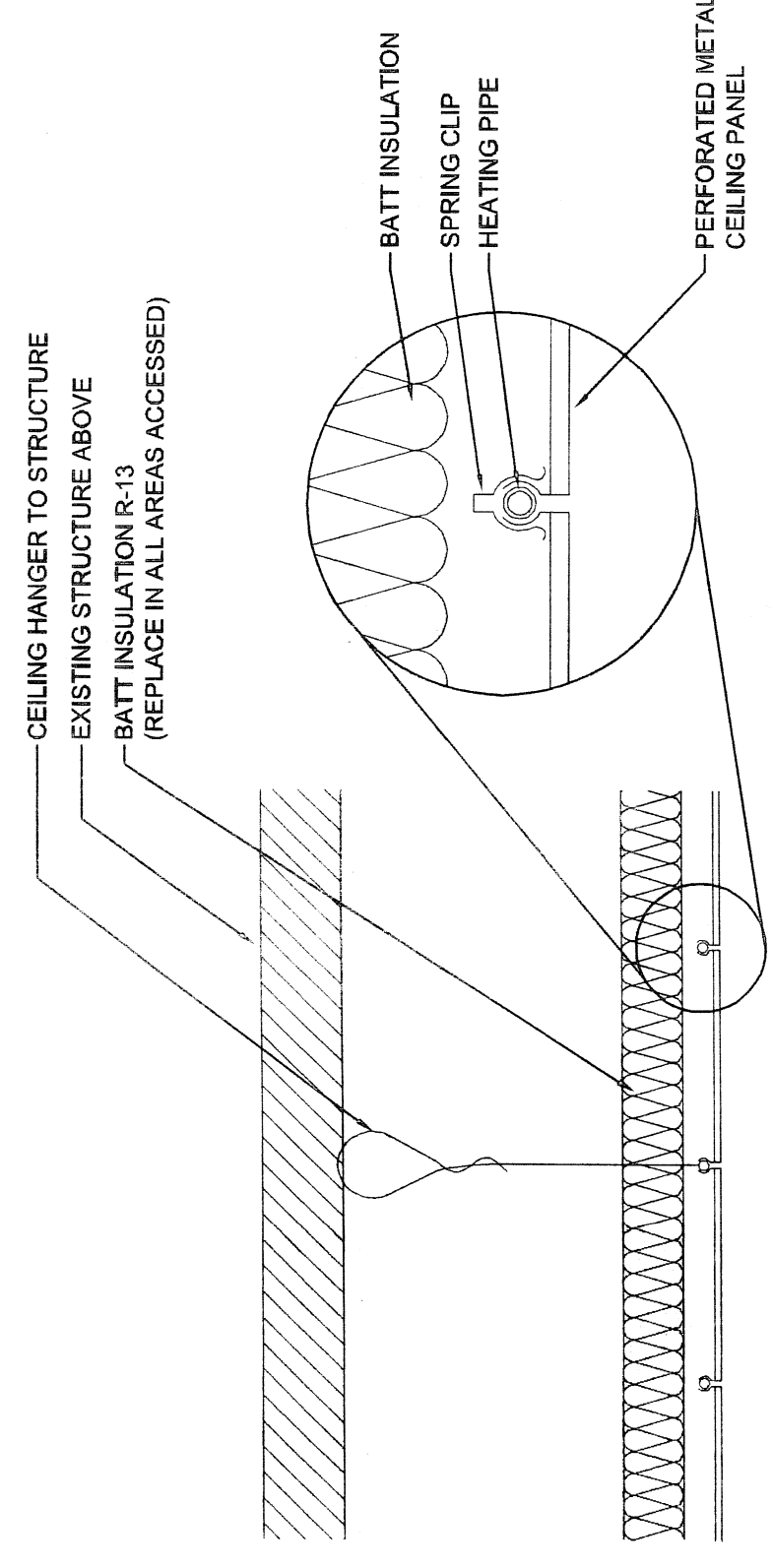
FOURTH FLOOR PLAN
17/6"=1'-0"



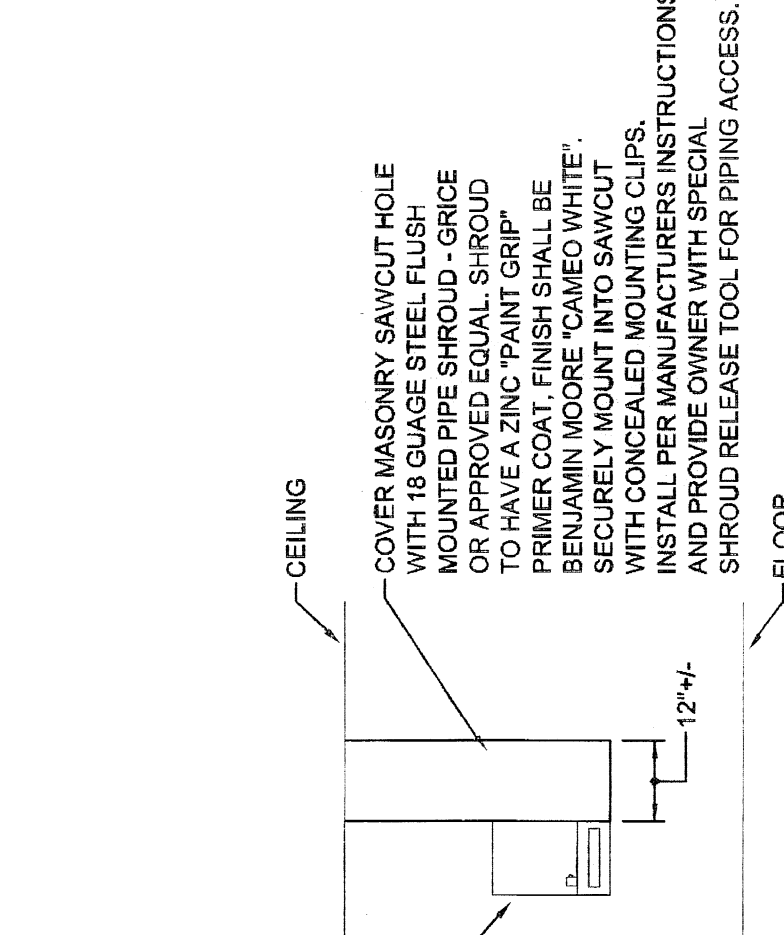
FIRST FLOOR PLAN
17/6"=1'-0"



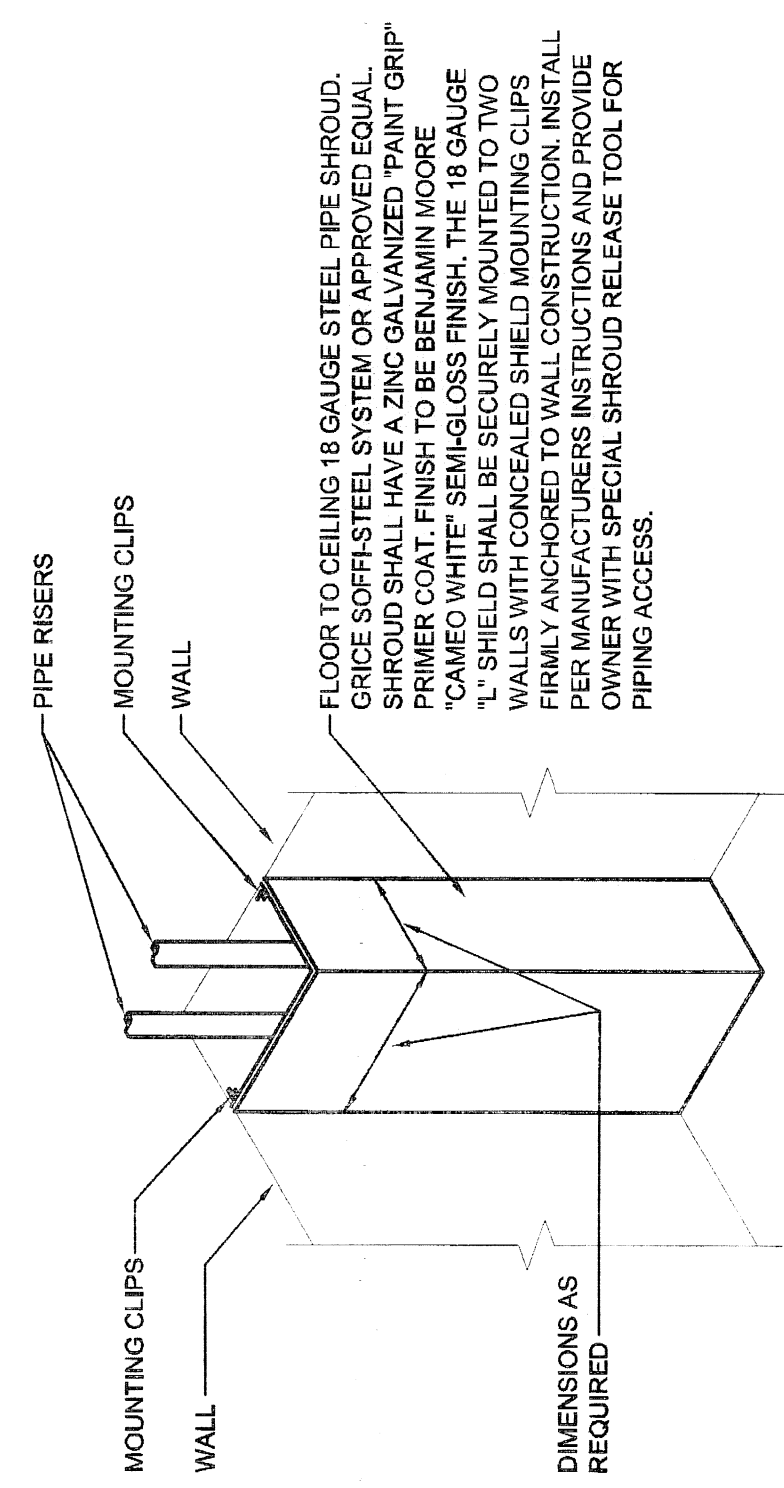
SECOND FLOOR PLAN
17/6"=1'-0"



EXISTING METAL SPLINE CEILING DETAIL
NBS



METAL PIPE SHROUD DETAIL AT DRINKING FOUNTAINS
NBS



TYPICAL METAL PIPE SHROUD DETAIL
NBS

RFS Engineering
Rfe First Shumway Engineering, P.C.
71 Water St. 03304
P: 603.524.4647
F: 603.528.7653
www.rfsengineering.com

UNIVERSITY OF MASSACHUSETTS
SCHOOL OF CIVIL AND ENVIRONMENTAL ENGINEERING
FACILITIES PLANNING DIVISION

REV. NO.	DESCRIPTION	BY	APP'D	DATE

DRN. ADG	8/2/10	PROJECT NO.	RFS-209-5558	CONTRACT NO.	UMA 11-06
APP'D	8/2/10	SCALE	AS NOTED	SHEET	4
CKD.	8/2/10	DRAWING NUMBER		OF	21
APP'D	8/2/10	A-D-290-08-0015301-A1			