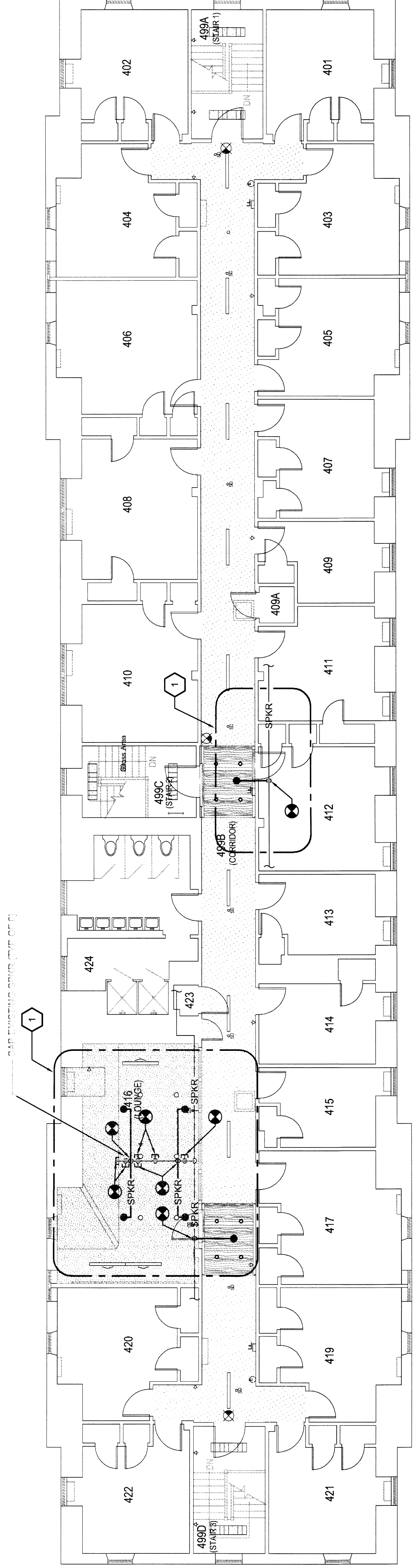


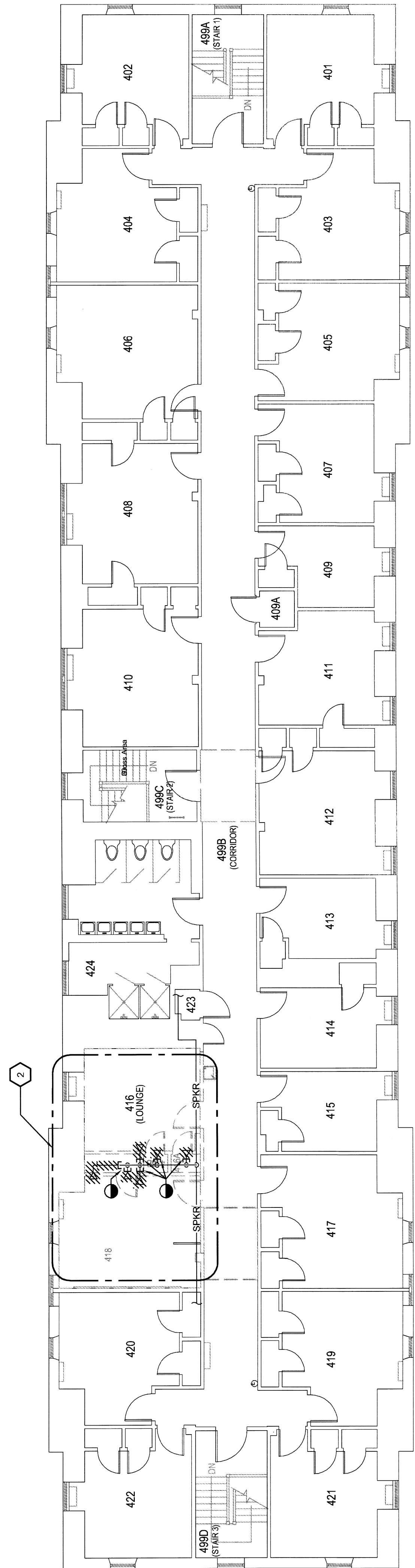
DRAWING NOTES

- 1 AREA SHOWN WITHIN THIS BOUNDARY INDICATES THE EXTENT OF NEW SPRINKLER WORK TO ACCOMMODATE RENOVATION WORK
- 2 AREA SHOWN WITHIN THIS BOUNDARY INDICATES THE EXTENT OF NEW SPRINKLER SYSTEM TO ACCOMMODATE NEW RENOVATION WORK



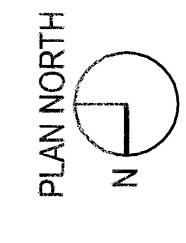
NOTE: ENTIRE BUILDING IS FULLY EQUIPPED WITH A WET PIPE SPRINKLER SYSTEM. AREAS SHOWN FOR RENOVATION WORK SHALL BE IN CONFORMANCE WITH NFPA 13

FOURTH FLOOR FIRE PROTECTION PLAN
1/8"=1'-0"



FOURTH FLOOR FIRE PROTECTION DEMOLITION PLAN
1/8"=1'-0"

23 MARCH 2011



RFS Engineering
RFS Engineering, Inc.
71 Water St., 2nd Floor
Boston, MA 02109
P: 603.524.4647
F: 603.526.7653
www.rfsengineering.com

REV. NO.	DESCRIPTION	BY	APPD	DATE

UNIVERSITY OF MASSACHUSETTS FACILITIES PLANNING DIVISION		LEWIS HALL & THATCHER HALL FINISH UPGRADE 2011	
PROJECT NO. 103078501	CONTRACT NO. UMA.10400	SHEET CF	OF
SCALE 1/8" = 1'-0"	DRAWING NUMBER THATCHER FP2.4		
DRN	APPD	CAD	APPD