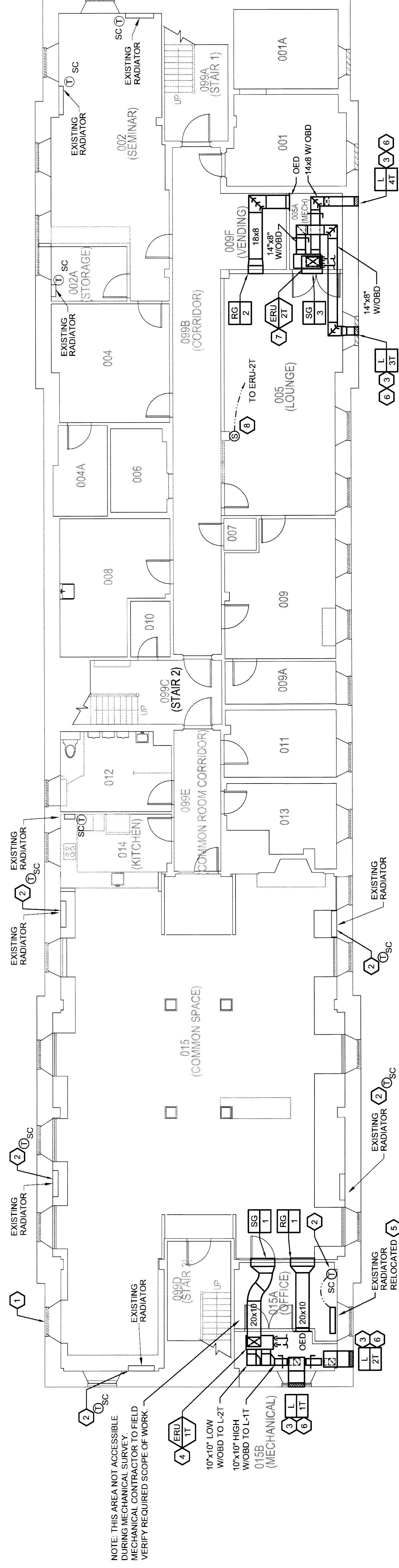


MECHANICAL DRAWING NOTES:

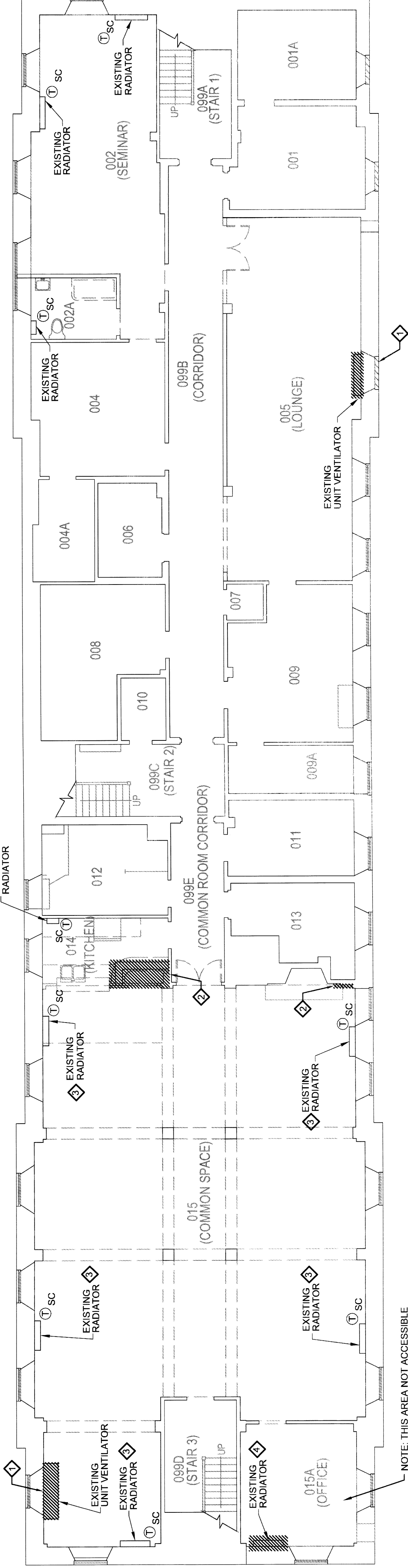
- 1 EXISTING LOUVER SHALL BE REPLACED BY G.C. REFER TO ARCHITECTURAL PLANS FOR ADDITIONAL INFORMATION.
- 2 PROVIDE REMOTE SENSOR THERMOSTAT BY MAICON CONTROLS (MTWZ). MOUNTING SHALL BE CONCEALED WITHIN MECHANICAL ROOM. PROVIDE REMOTE SENSOR THERMOSTAT BY MAICON CONTROLS (MTWZ) AT THE COOL AIR INLET.
- 3 PROVIDE SHEETMETAL PLENUM CONNECTION FULL SIZE OF LOUVER (MMH). DEPTH AS REQUIRED FOR INSTALLATION (MIN. 12"). OUTSIDE AIR PLENUMS SHALL BE INSULATED.
- 4 PROVIDE 1-1/4" LPS AND 1" STEAM CONDENSATE PIPING AND CONNECT TO EXISTING STEAM MAINS WITHIN SPACE. CONTRACTOR TO FIELD VERIFY CONNECTIONS TO EXISTING STEAM PIPING. NEW STEAM PIPING SHALL INCLUDE DRIP TRAPS, STRAINERS, ISOLATION VALVES, EXT TRAPS AS REQUIRED BY THE EQUIPMENT MANUFACTURER INSTALLATION DIAGRAMS. PROVIDE INTAKE AND EXHAUST DUCTWORK WITH OPPOSED BLADE DAMPERS FOR AIR VOLUME BALANCING. SET OBD AIR FLOWS TO 500 CFM.
- 5 PROVIDE 1-1/4" LPS AND 1" STEAM CONDENSATE PIPING AND CONNECT TO EXISTING STEAM MAINS WITHIN SPACE. CONTRACTOR TO FIELD VERIFY CONNECTIONS TO EXISTING STEAM PIPING. NEW STEAM PIPING SHALL INCLUDE DRIP TRAPS, STRAINERS, ISOLATION VALVES, EXT TRAPS AS REQUIRED FOR COMPLETE INSTALLATION. INSTALLATION SHALL MATCH EXISTING STEAM RADIATOR INSTALLATIONS IN ADJACENT ROOM.
- 6 WHEN PENETRATING AN EXTERIOR WALL OR WHERE AN EXISTING WINDOW IS LOCATED THE MECHANICAL CONTRACTOR SHALL COORDINATE WALL OPENING AND/OR REMOVAL OF WINDOW (OR PORTIONS OF WINDOW) WITH GENERAL CONTRACTOR AND ARCHITECT.
- 7 PROVIDE 1" LPS AND 3/4" STEAM CONDENSATE PIPING AND CONNECT TO EXISTING STEAM MAINS WITHIN SPACE. CONTRACTOR TO FIELD VERIFY CONNECTIONS TO EXISTING STEAM PIPING. NEW STEAM PIPING SHALL INCLUDE DRIP TRAPS, STRAINERS, ISOLATION VALVES, EXT TRAPS AS REQUIRED BY THE EQUIPMENT MANUFACTURER INSTALLATION DIAGRAMS. PROVIDE INTAKE AND EXHAUST DUCTWORK WITH OPPOSED BLADE DAMPERS FOR AIR VOLUME BALANCING. SET OBD AIR FLOWS TO 150 CFM.
- 8 PROVIDE REMOTE TEMPERATURE SENSOR, CONCEAL WIRES WITHIN NEW FURRED OUT WALLS AND CEILINGS. COORDINATE ROUTING IN FIELD WITH ARCHITECT TO MINIMIZE VISUAL IMPACT. MOUNTING HEIGHT SHALL BE 4' - 0" A.F.F.

DEMOLITION NOTES:

- 1 REMOVE EXISTING EQUIPMENT. REMOVE STEAM AND STEAM CONDENSATE PIPING BACK TO MAINS AND CAP. REMOVE DUCTWORK ASSOCIATED WITH UNIT VENTILATORS.
- 2 REMOVE EXHAUST GRILLES, DUCTWORK, AS REQUIRED TO CAP/SEAL AND CONCEAL BEHIND WALL.
- 3 REMOVE EXISTING SELF-CONTAINED TEMPERATURE CONTROLLER.
- 4 REMOVE AND RELOCATE EXISTING RADIATOR AS SHOWN ON THE NEW WORK PLAN. CAP EXISTING PIPING CONNECTIONS AND STEAM CONDENSATE CONNECTIONS. ALL DEMOLITION SHALL BE REUSED FOR ERECTION INSTALLATION. REFER TO NEW WORK PLAN.

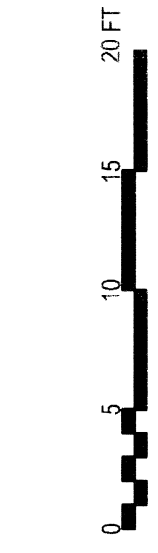


BASEMENT MECHANICAL PLAN
1/8"=1'-0"



BASEMENT MECHANICAL DEMOLITION PLAN
1/8"=1'-0"

23 MARCH 2011



RFS engineering
RFS Engineering, P.C.
71 Water St.
Lancaster, NH 03246
P: 603.524.4947
F: 603.524.4948
www.rfsengineering.com

REV. NO.	DESCRIPTION	BY	APPD	DATE

UNIVERSITY OF MASSACHUSETTS
FACILITIES PLANNING DIVISION
LEWIS HALL & THATCHER HALL
FINISH UPGRADE 2011
BASEMENT MECHANICAL & DEMOLITION PLANS

BY	DATE	PROJECT NO.	CONTRACT NO.
		10-00176501	UMA 10-010
DRN	BE	SCALE	SHEET
		AS NOTED	OF
APPD	PTG	DRAWING NUMBER	
CAD	AL	DRAWING NUMBER	
APPD		DRAWING NUMBER	

© 2011 LEERS WEINZAPF ASSOCIATES ARCHITECTS INC.

NOTE: THIS AREA NOT ACCESSIBLE DURING MECHANICAL SURVEY. FIELD VERIFY REQUIRED SCOPE OF WORK.