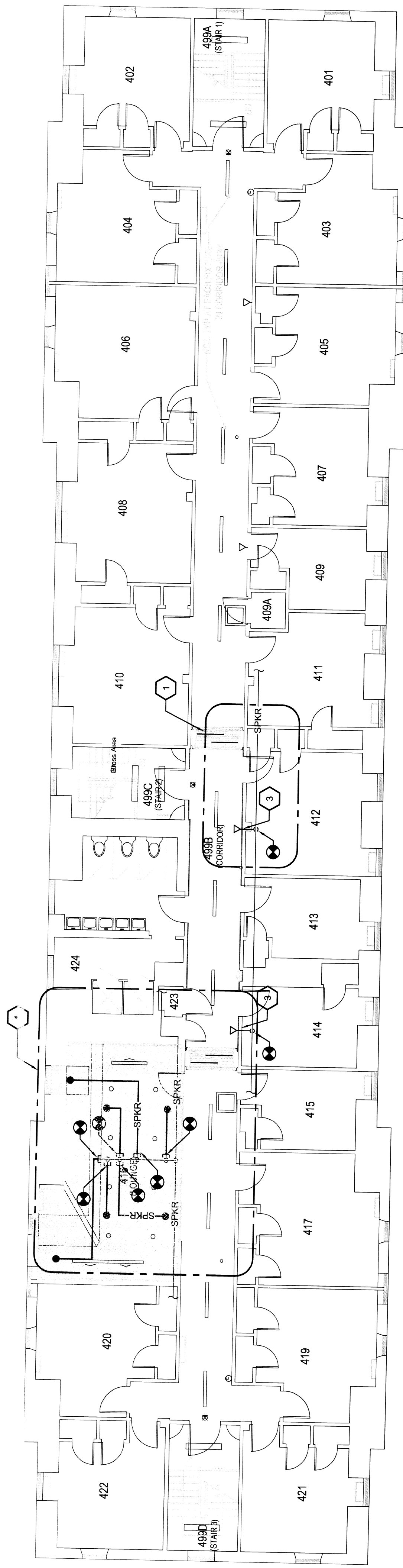


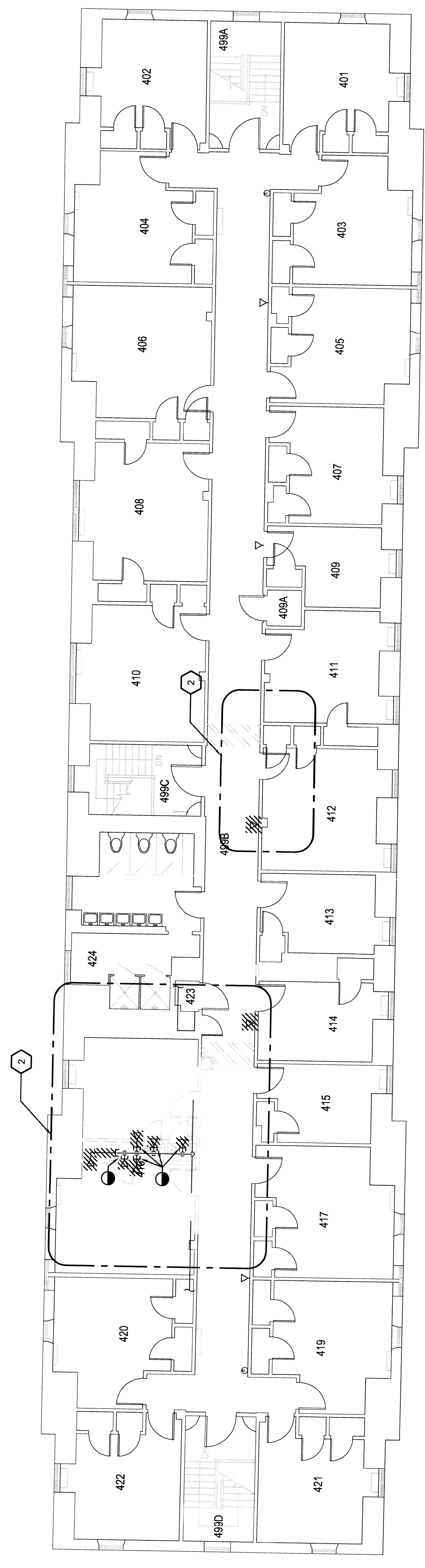
DRAWING NOTES

- 1 AREA SHOWN WITHIN THIS BOUNDARY INDICATES THE EXTENT OF NEW SPRINKLER WORK TO ACCOMMODATE RENOVATION WORK
- 2 AREA SHOWN WITHIN THIS BOUNDARY INDICATES THE EXTENT OF RENOVATION WORK ON THE EXISTING SPRINKLER SYSTEM TO ACCOMMODATE RENOVATION WORK
- 3 REMOVE EXISTING SIDEWALL SPRINKLER AND REINSTALL SO DEFLECTOR IS 4" (MIN) BELOW NEW CEILING PORTAL.



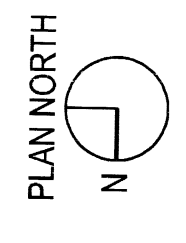
NOTE: ENTIRE BUILDING IS FULLY EQUIPPED WITH A WET PIPE SPRINKLER SYSTEM. AREAS SHOWN FOR RENOVATION WORK SHALL BE IN CONFORMANCE WITH NFPA 13

FOURTH FLOOR FIRE PROTECTION PLAN
1/8"=1'-0"

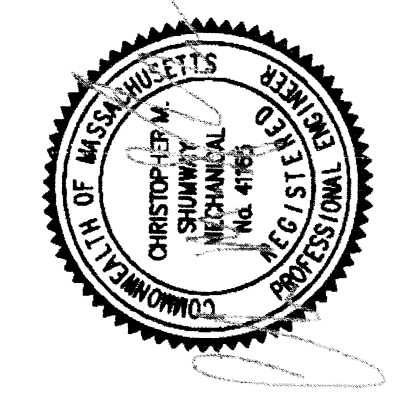


FOURTH FLOOR FIRE PROTECTION DEMOLITION PLAN
1/8"=1'-0"

12 DECEMBER 2011



RFS engineering
Rise First Shumway Engineering, P.C.
Lancaster, NH 03246
71 Water St.
F. 603.528.3853
www.rfsengineering.com



REV. NO.	DESCRIPTION	BY	APPD	DATE

UNIVERSITY OF MASSACHUSETTS
FACILITIES PLANNING DIVISION
THATCHER HALL
FINISH UPGRADE 2012

BY	DATE	PROJECT NO.	CONTRACT NO.
AUG		00102001	UMA 12-18
APPD		SCALE	1/8" = 1'-0"
CAD		SHEET	OF
APPD		DRAWING NUMBER	FPT2.4
		LEWIS	

FOURTH FLOOR FIRE PROTECTION & DEMOLITION PLANS