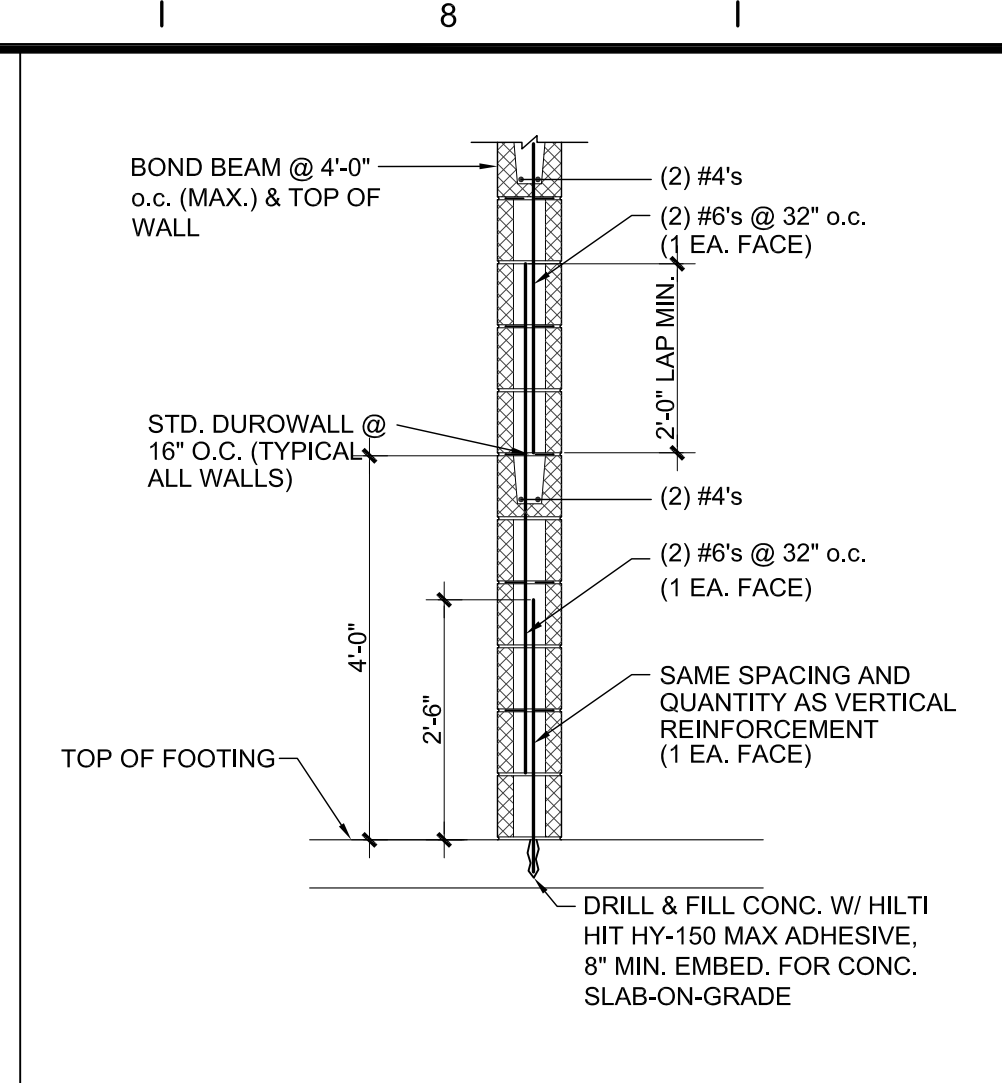
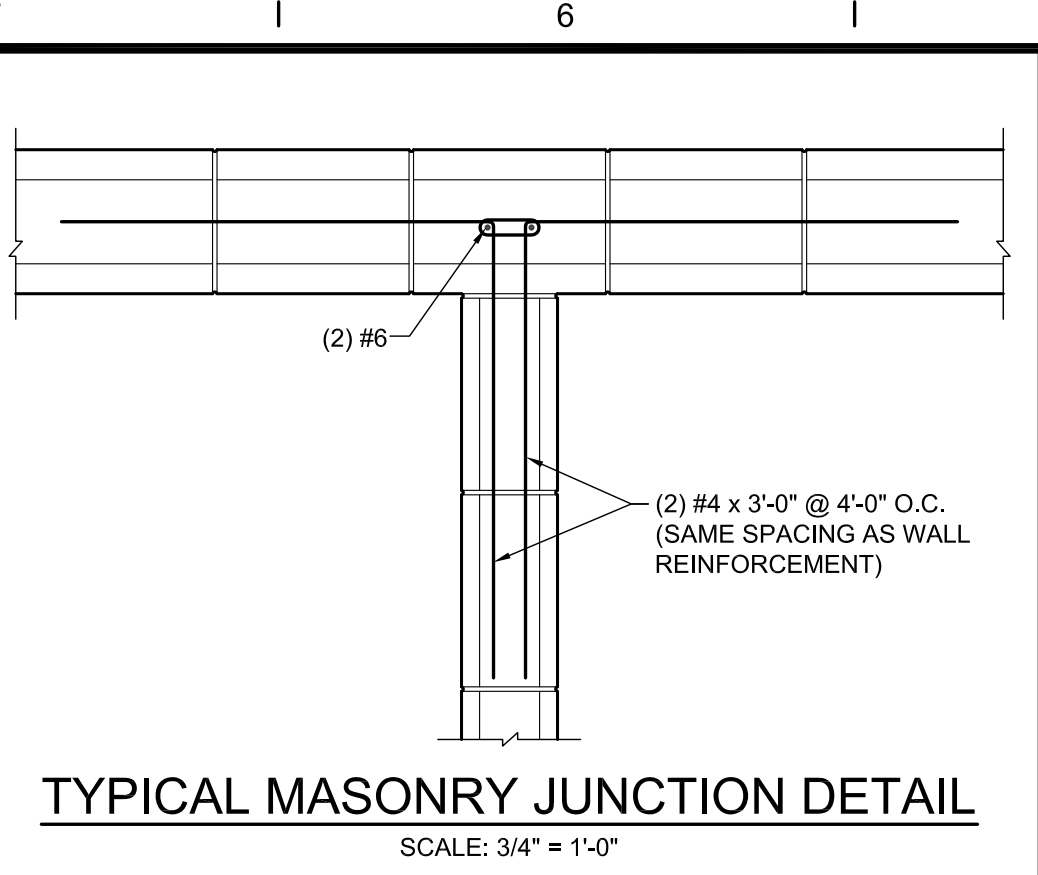


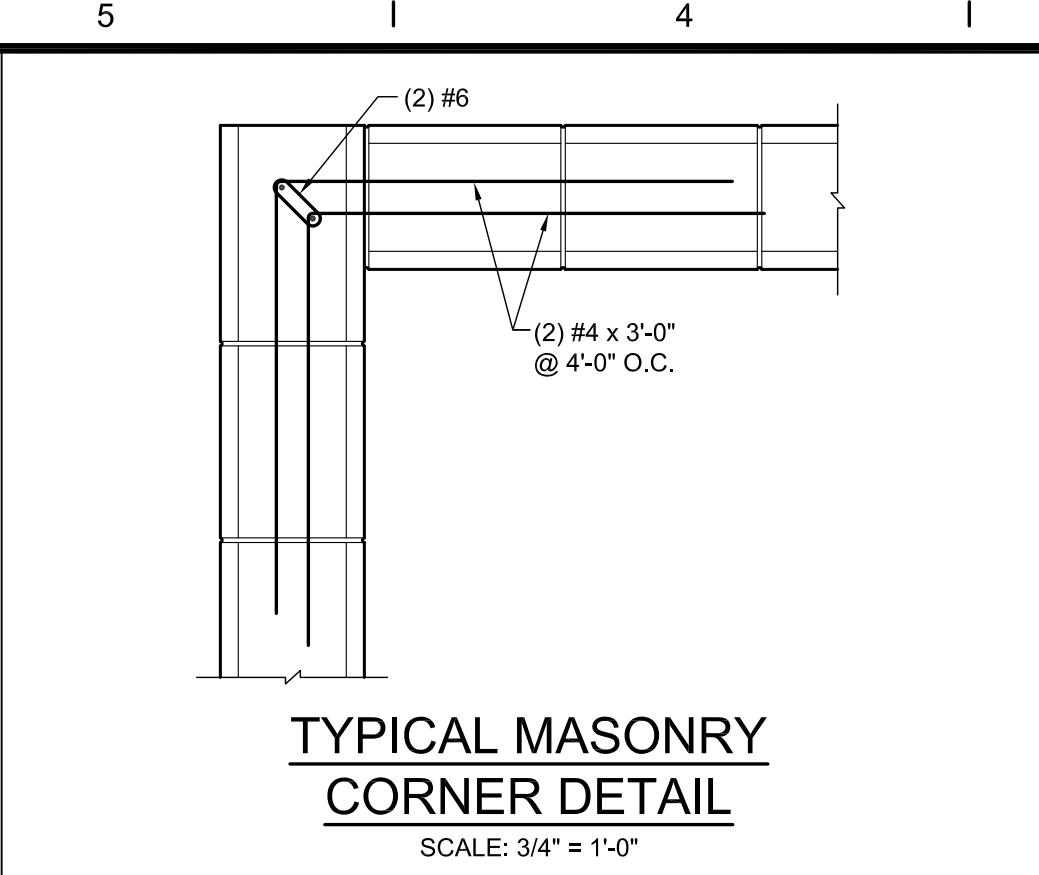
TYPICAL 8" MASONRY WALL REINFORCING DETAIL #1
SCALE: 1/2" = 1'-0"



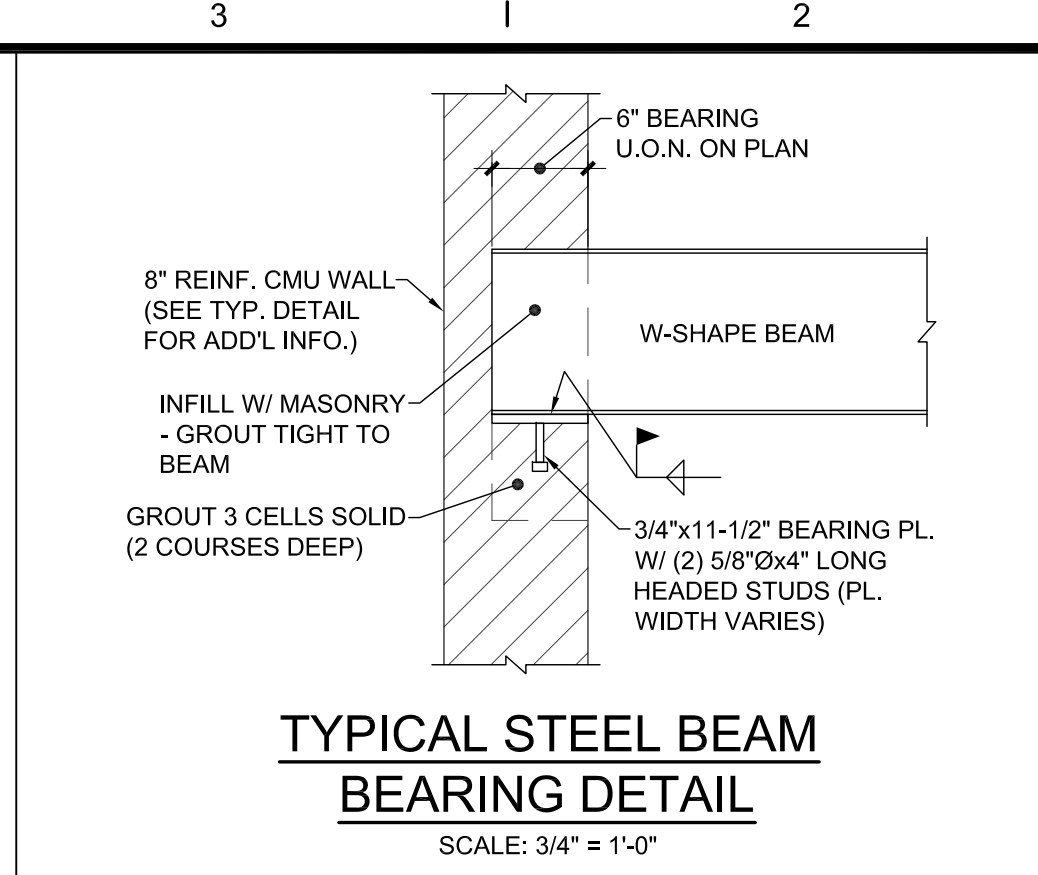
TYPICAL 8" MASONRY WALL REINFORCING DETAIL #2
SCALE: 1/2" = 1'-0"



TYPICAL MASONRY JUNCTION DETAIL
SCALE: 3/4" = 1'-0"



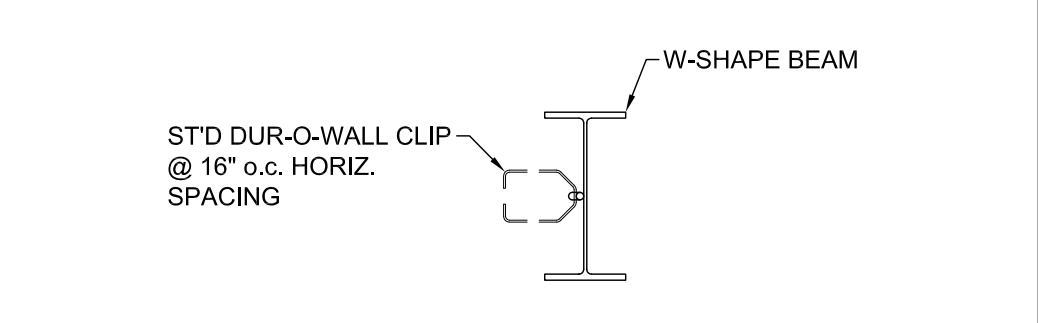
TYPICAL MASONRY CORNER DETAIL
SCALE: 3/4" = 1'-0"



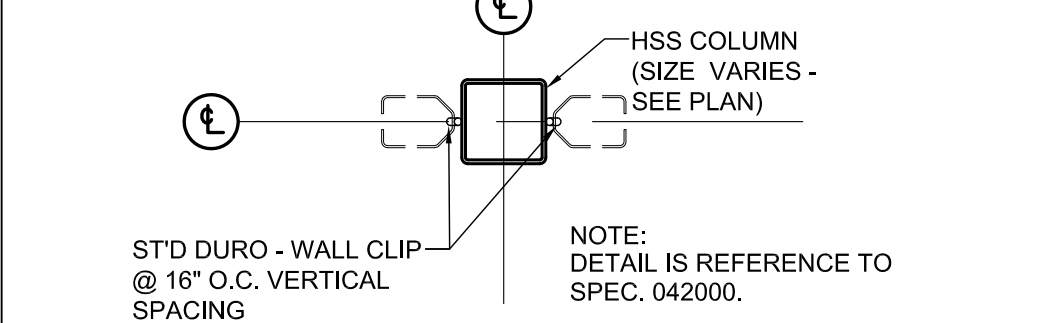
TYPICAL STEEL BEAM BEARING DETAIL
SCALE: 3/4" = 1'-0"

NOTE: SINGLE VERTICAL BAR REINFORCING SHOWN FOR CLARITY. TWO VERTICAL BARS ARE REQUIRED.

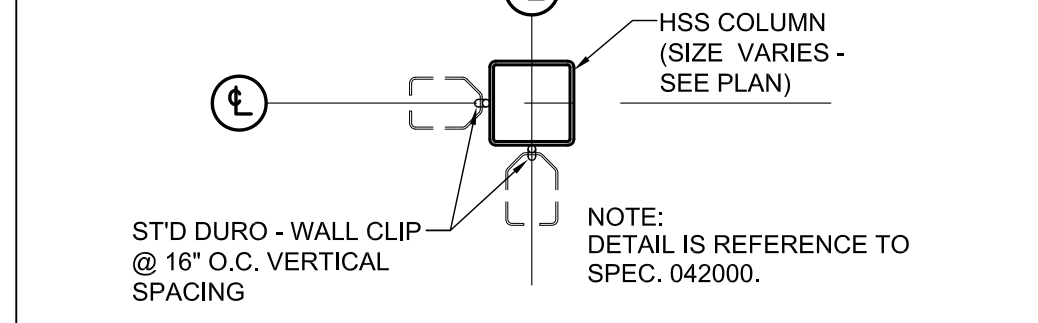
NOTE: SINGLE VERTICAL BAR REINFORCING SHOWN FOR CLARITY. TWO VERTICAL BARS ARE REQUIRED.



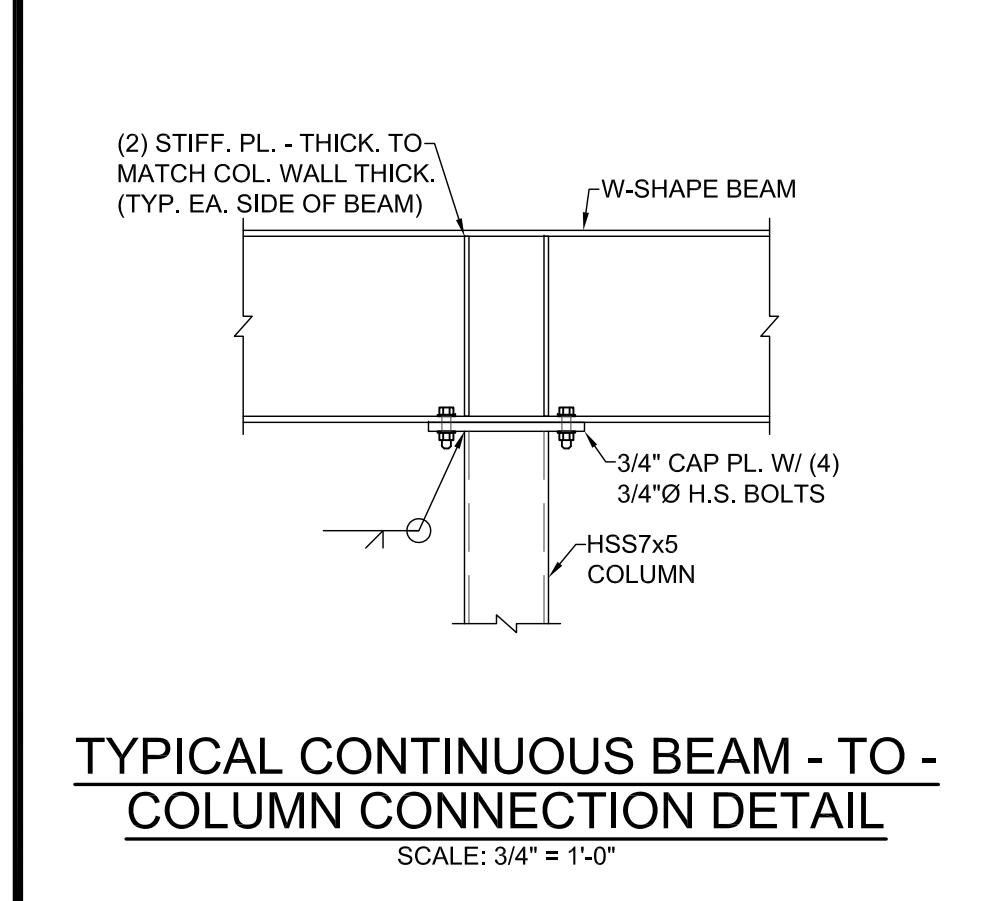
TYPICAL DUR-O-WALL DETAIL AT BEAM LOCATIONS
SCALE: 3/4" = 1'-0"



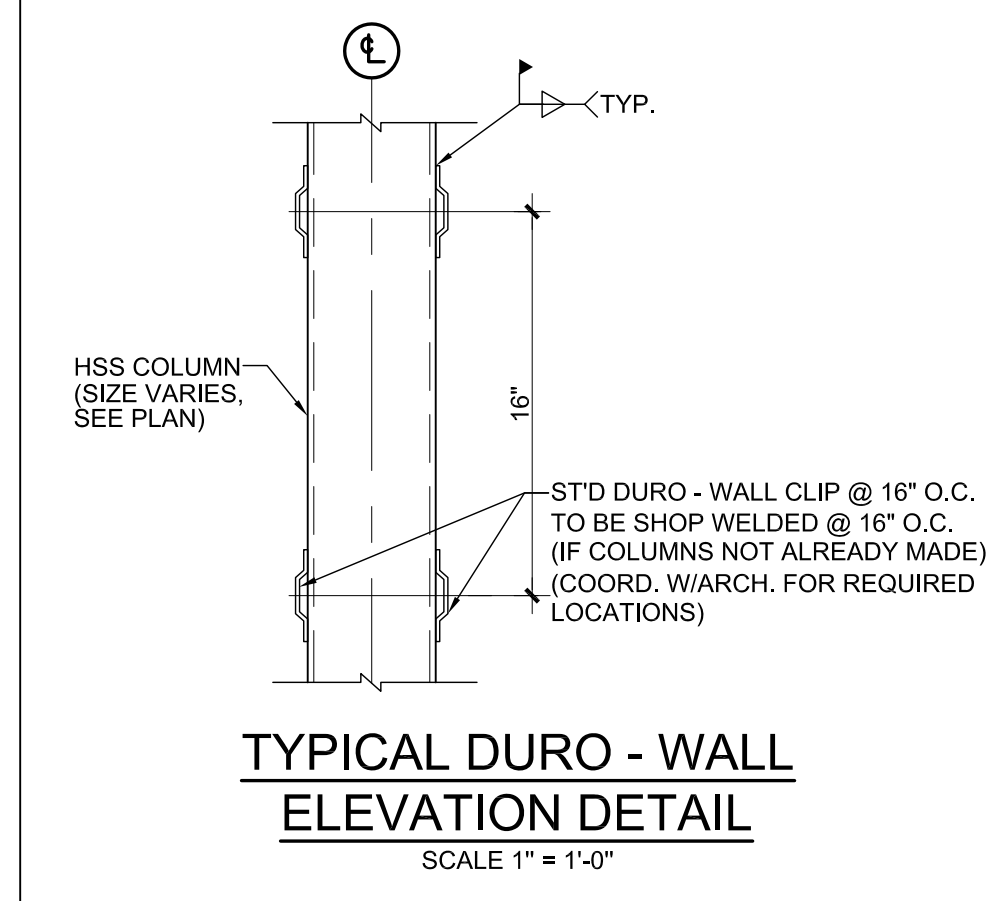
TYPICAL PLAN VIEW OF DUR-O-WALL DETAIL AT COLUMNS #1
SCALE 1" = 1'-0"



TYPICAL PLAN VIEW OF DUR-O-WALL DETAIL AT COLUMNS #2
SCALE 1" = 1'-0"



TYPICAL CONTINUOUS BEAM - TO - COLUMN CONNECTION DETAIL
SCALE: 3/4" = 1'-0"



TYPICAL DURO - WALL ELEVATION DETAIL
SCALE 1" = 1'-0"

COLUMN SCHEDULE

COLUMN NUMBER	A - 1	A - 2	A - 4	A - 6	A - 8	A - 10	A.2 - 1	A.4 - 10	A.7 - 1	B - 1	B - 2	B - 4	B - 6	B - 8	B - 10	C - 1	C - 2	D - 1	D.6 - 1	E - 1	E - 2	F - 3	F - 5	F - 7	F - 9	F.5 - 9	G - 9	
HIGH ROOF T.O.S. EL. = 19'-8" @ H.P.																												
LOW ROOF T.O.S. EL. = 12'-8" @ H.P.	HSS6x1/2	HSS7x3/8	HSS7x3/8	HSS7x3/8	HSS7x3/8	HSS6x1/2	HSS7x3/8	HSS7x3/8	HSS7x3/8	HSS7x3/8	HSS6x1/2	HSS6x1/2	HSS6x1/2	HSS6x1/2	HSS6x1/2	HSS7x3/8	HSS6x1/2	HSS7x3/8	HSS7x3/8	HSS6x1/2	HSS6x1/2	HSS6x1/2	HSS6x1/2	HSS6x1/2	HSS6x1/2	HSS6x1/2	HSS6x1/2	HSS6x1/2
FIN. FL. EL. = 0'-0"																												
BASE PLATE	"L"	"W"	"T"	"L"	"W"	"T"	"L"	"W"	"T"	"L"	"W"	"T"	"L"	"W"	"T"	"L"	"W"	"T"	"L"	"W"	"T"	"L"	"W"	"T"	"L"	"W"	"T"	
	10"	13"	13"	13"	13"	10"	13"	13"	13"	13"	12"	12"	12"	12"	10"	13"	12"	13"	13"	13"	12"	14"	14"	14"	12"	14"	12"	
	10"	9-1/2"	9-1/2"	9-1/2"	9-1/2"	10"	9-1/2"	9-1/2"	9-1/2"	9-1/2"	10"	10"	10"	10"	10"	9-1/2"	10"	9-1/2"	9-1/2"	10"	10"	10"	10"	10"	10"	10"	10"	10"
	1"	1"	1"	1"	1"	1"	3/4"	1"	3/4"	1"	1"	1"	1"	1"	1"	1"	1"	1"	3/4"	1"	1"	1"	1"	1"	1"	1"	1"	1"

NOTES:
 1.) COLUMN LENGTHS ARE APPROXIMATE.
 2.) PROVIDE FOUR ANCHOR BOLTS PER COLUMN (TYPICAL UNLESS OTHERWISE NOTED).
 3.) PROVIDE 1/4" LEVELING PLATE, SAME SIZE AS WELDED BASE PLATE, WITH 3/4" NON-SHRINK GROUT.
 4.) COLUMN SCHEDULES ARE INTENDED TO SHOW SIZES AND GENERAL CONFIGURATION OF MAIN BUILDING COLUMNS. THEY ARE NOT INTENDED TO SHOW ALL CONNECTIONS OR JOINTS REQUIRED. VIEW ORIENTATION VARIES FROM COLUMN TO COLUMN.
 5.) STUB COLUMNS INDICATED ON "ROOF FRAMING PLAN" ONLY.



Notice: This drawing is the property of Tecton Architects | Inc. The use, re-use or reproduction of this drawing for any purpose whatsoever without an expressed written agreement between Tecton Architects | Inc and the user is prohibited. Rights to use the information on this sheet are not transferred until payment has been received for services rendered. Any rights so granted are non-transferable to other parties without the prior expressed written consent of Tecton Architects | Inc.

JSE
 Johnson Structural Engineering, Inc.
 30 Faith Avenue, Auburn, Massachusetts 01501
 phone: (508) 832 3535 fax: (508) 832 3393

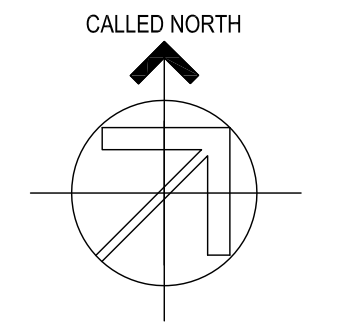
Owner
TECTON ARCHITECTS

ONE HARTFORD SQUARE WEST
 HARTFORD, CT

Project
Wilbraham Fire Station

2770 Boston Road
 Wilbraham MA,

Key Plan



Seals
 BID SET

Issues

Date	Description

Revisions

No.	Date	Description

Drawing Title
TYPICAL DETAILS & COLUMN SCHEDULE

Issue Date: 01/19/12
 Project No: TMP-01-AR Scale: AS NOTED
 Project Manager: Production Leader:
 Project Architect: Peer Reviewer:

Drawing Number
S3.2

7/19/2011 11:44:03 AM C:\Users\lmm\Desktop\lmm\p01\Arch-imp\01\trcnr